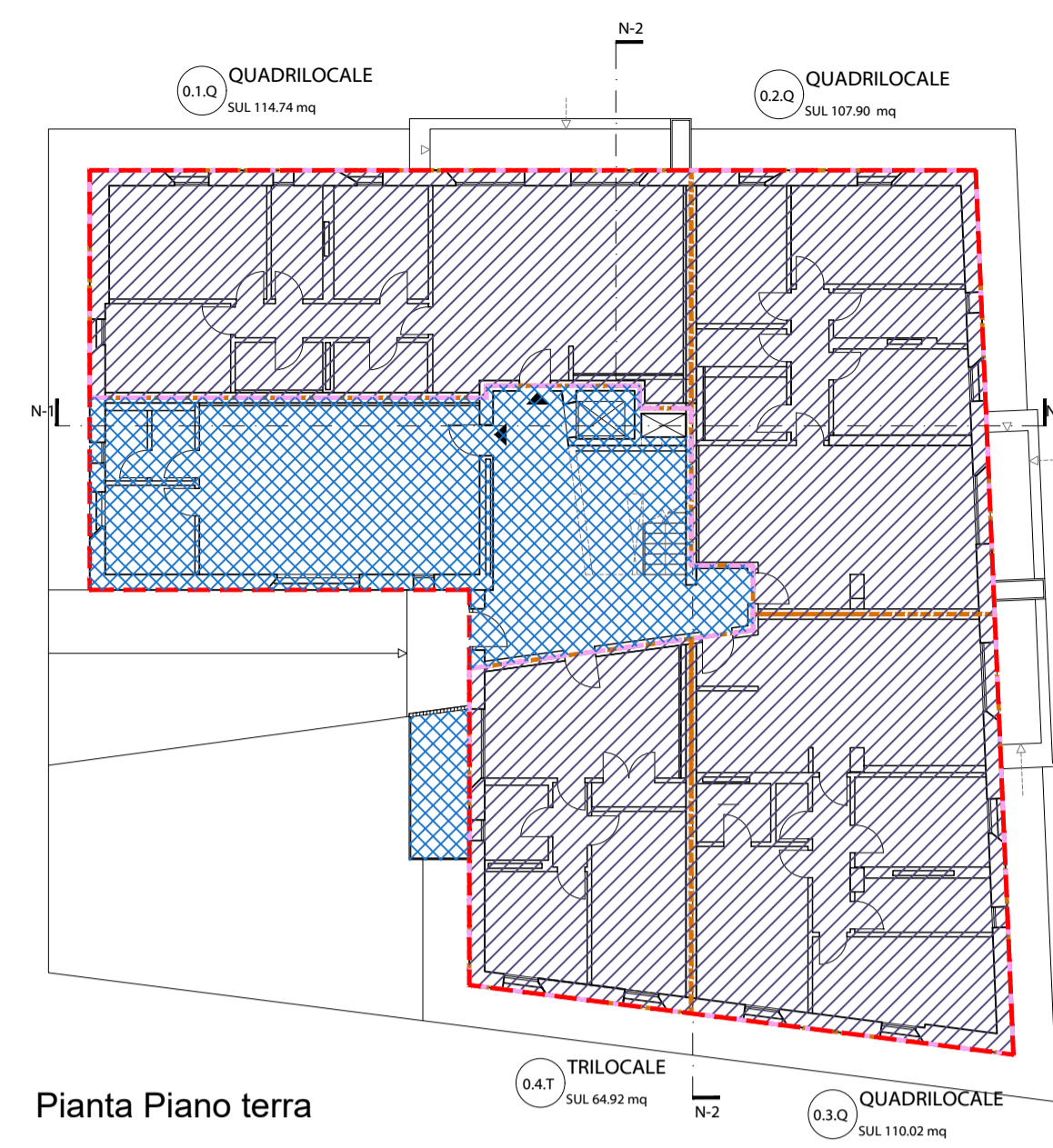


		SUL		h	VOLUME
1.Q	Quadrilocale	114,74 mq		H1 3,17 m	363,73 mc
2.Q	Quadrilocale	107,90 mq		H1 3,17 m	342,04 mc
3.Q	Quadrilocale	110,02 mq		H1 3,17 m	348,76 mc
4.T	Trilocale	64,92 mq		H1 3,17 m	205,80 mc
5.B	Bilocale	64,49 mq		H1 3,17 m	204,43 mc
6.Q	Quadrilocale	114,74 mq		H1 3,17 m	363,73 mc
7.Q	Quadrilocale	107,90 mq		H1 3,17 m	342,04 mc
8.Q	Quadrilocale	110,02 mq		H1 3,17 m	348,76 mc
9.T	Trilocale	64,92 mq		H1 3,17 m	205,80 mc
10.B	Bilocale	64,49 mq		H1 3,17 m	204,43 mc
11.Q	Quadrilocale	114,74 mq		H1 3,17 m	363,73 mc
12.Q	Quadrilocale	107,90 mq		H1 3,17 m	342,04 mc
13.Q	Quadrilocale	110,02 mq		H1 3,17 m	348,76 mc
14.T	Trilocale	64,92 mq		H1 3,17 m	205,80 mc
15.B	Bilocale	64,49 mq		H1 2,70 m	174,12 mc
16.Q	Quadrilocale	117,38 mq		H1 2,70 m	316,93 mc
17.Q	Quadrilocale	111,37 mq		H1 2,70 m	300,70 mc
18.Q	Quadrilocale	115,30 mq		H1 2,70 m	311,31 mc
19.T	Trilocale	64,92 mq		H1 2,70 m	175,28 mc

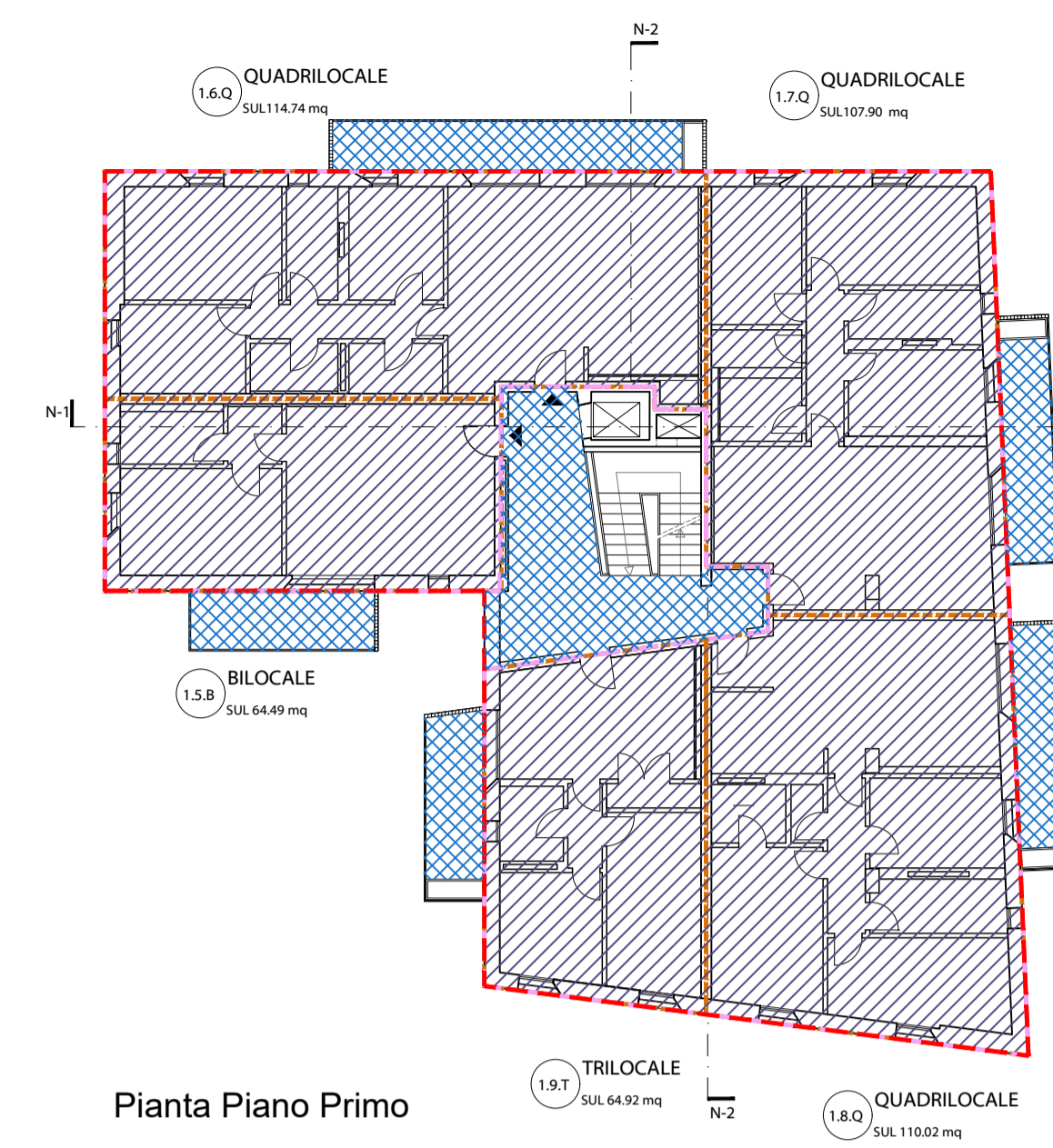
<b>TOTALE SUL</b>	<b>1795,18 mq</b>	<b>TOTALE VOLUME</b>	<b>5468,19 mc</b>
-------------------	-------------------	----------------------	-------------------

SNR	
Piano terra	12,06 mq
Piano primo	84,43 mq
Piano secondo	86,50 mq
Piano terzo	56,50 mq
Piano copertura	378,00 mq

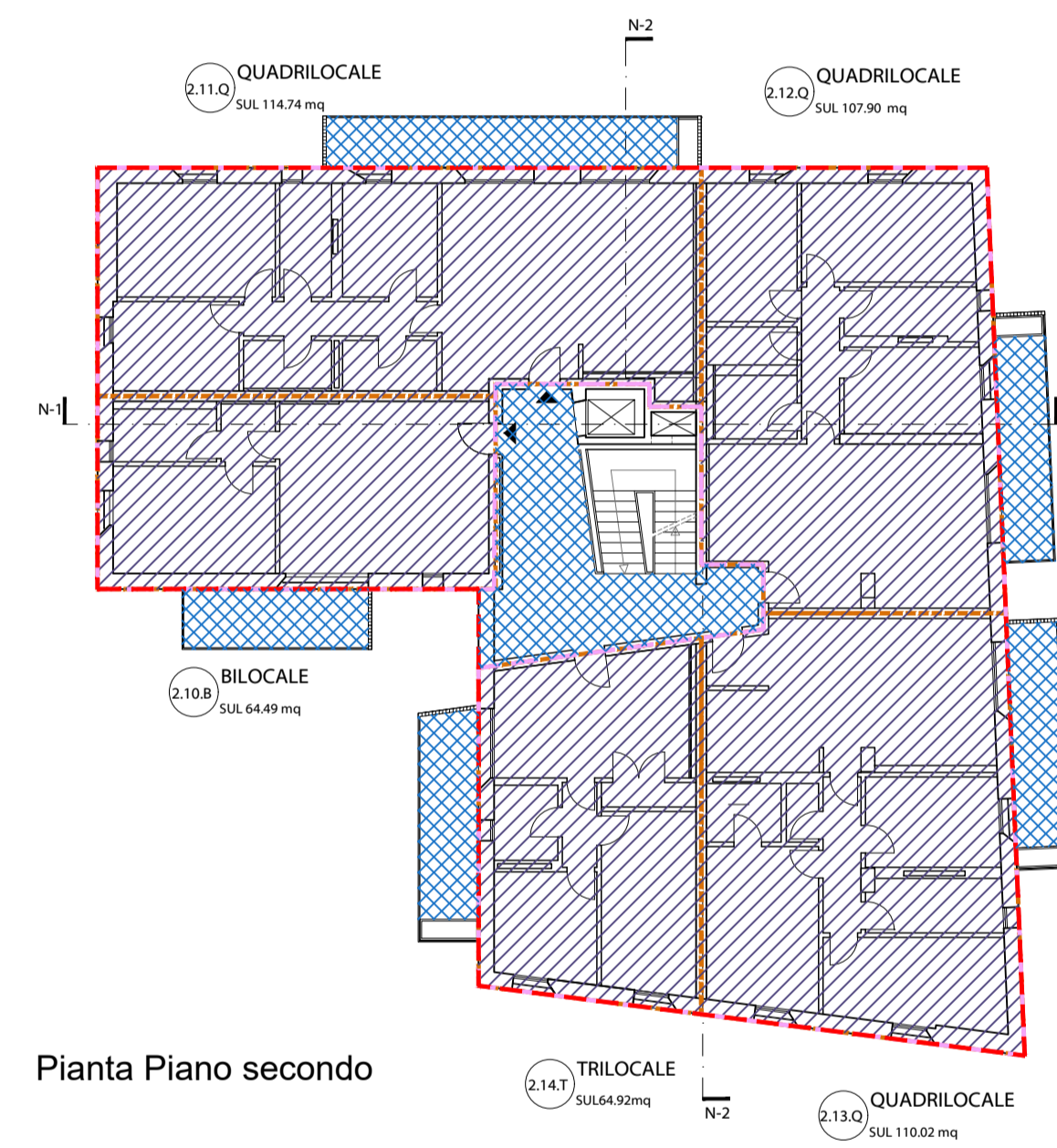
<b>TOTALE SNR</b>	<b>617,49 mq</b>
-------------------	------------------



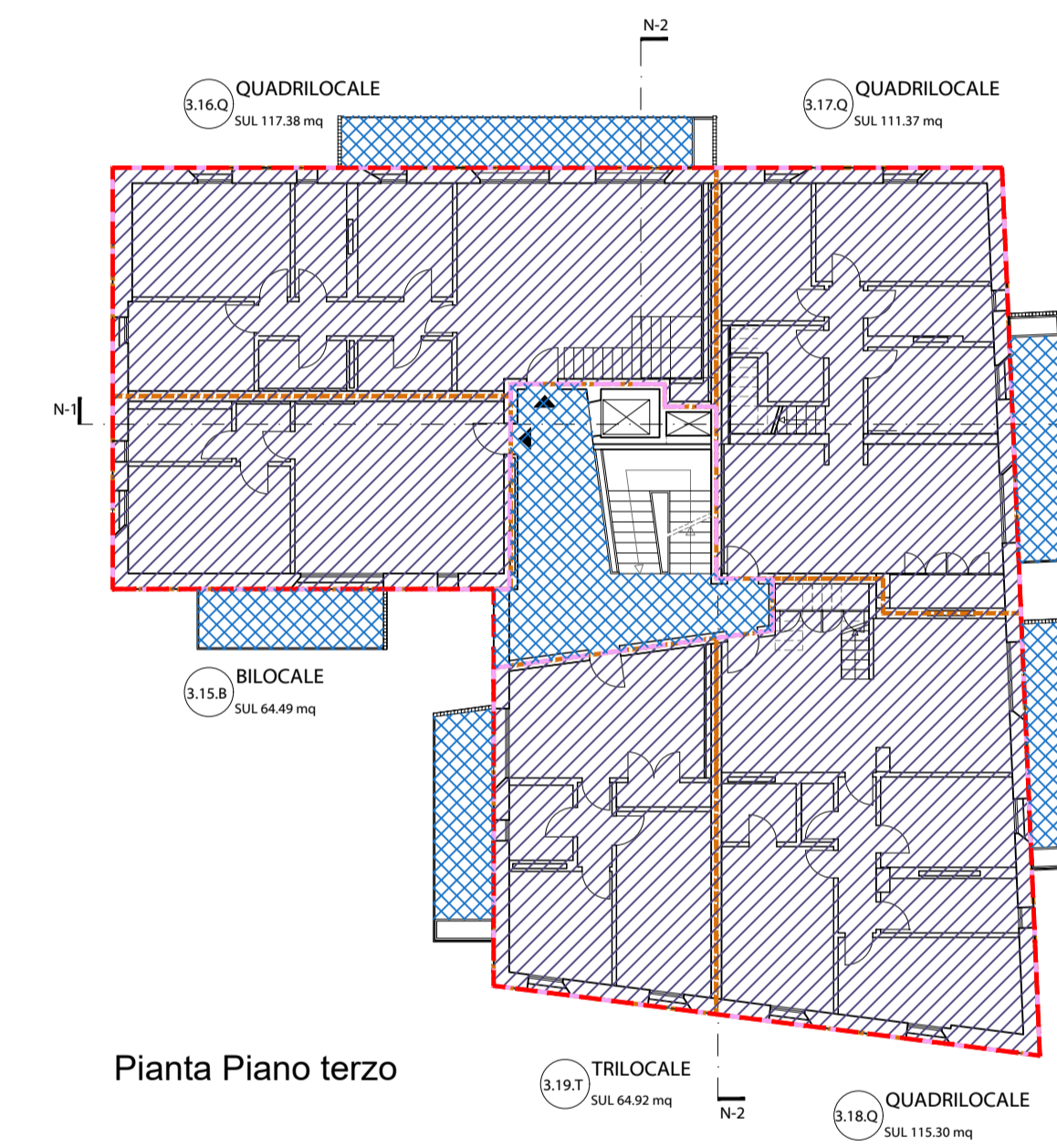
Pianta Piano terra



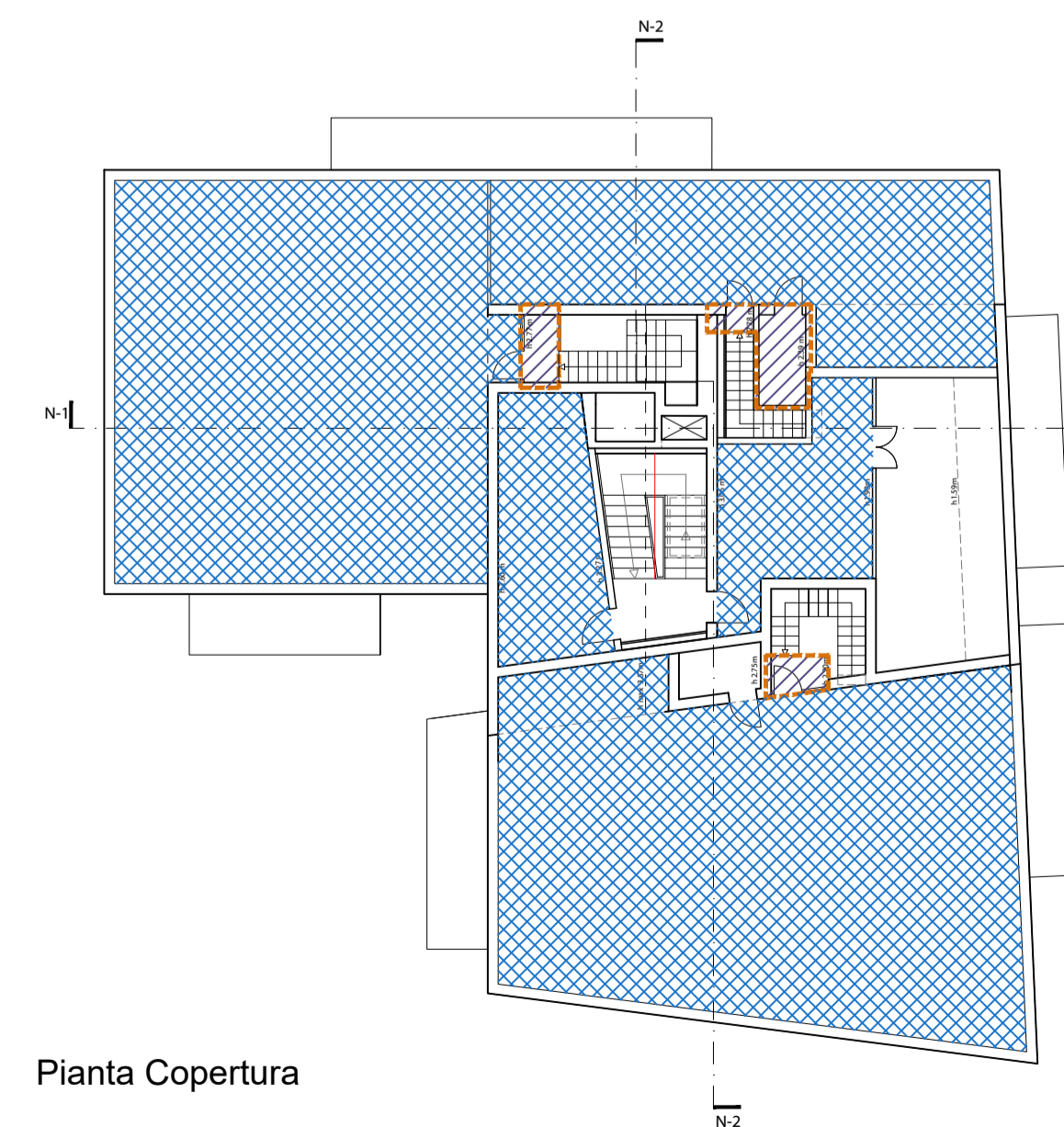
Pianta Piano Primo



Pianta Piano secondo



Pianta Piano terzo



Pianta Copertura

- perimetro sup.coperta
- perimetro sul
- divisione sul unità
- zone sul con diversa altezza
- sul a piano
- snr (sup.accessoria)



TITOLO: Piano di recupero area ex caserma Curtatone

UBICAZIONE: ITALIA - Toscana - Pisa

ELABORATO

SCALA GRAFICA: 1:200

OGGETTO ELAB.: Verifiche urbanistiche - edificio Nuovo

ID DOCUMENTO: FHT PISA PP 00 ED1 ARE 58 02 000 AZ

VERSIONE ELABORATO

VERSIONE: 1

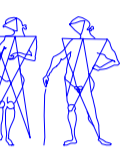
DATA: 02-08-2021

REV: 2

OGGETTO:

PROGETTISTI

Pierattelli Architetture S.r.l.  
via pandolfini, 12 - 50121 firenze  
tel. 055/2346884 - fax 055/2226034



CAPOGRUPPO: Arch. Massimo Pierattelli

Timbro e Firma

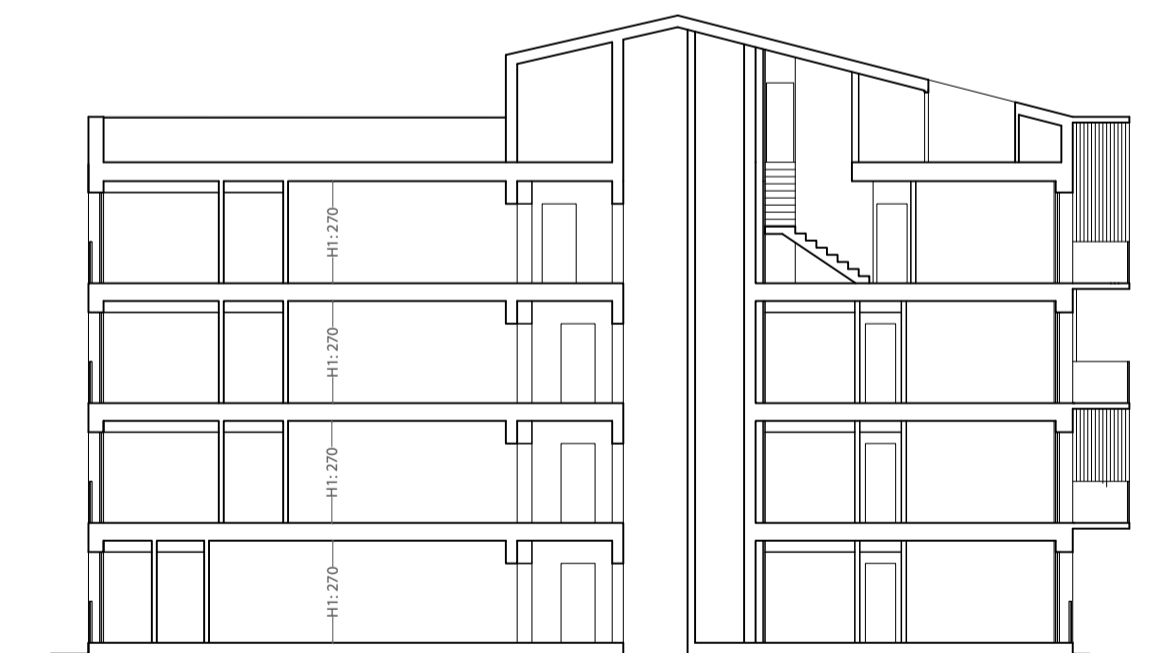
RESP. TECNICO Arch. Massimo Pierattelli

PROGETTAZIONE:

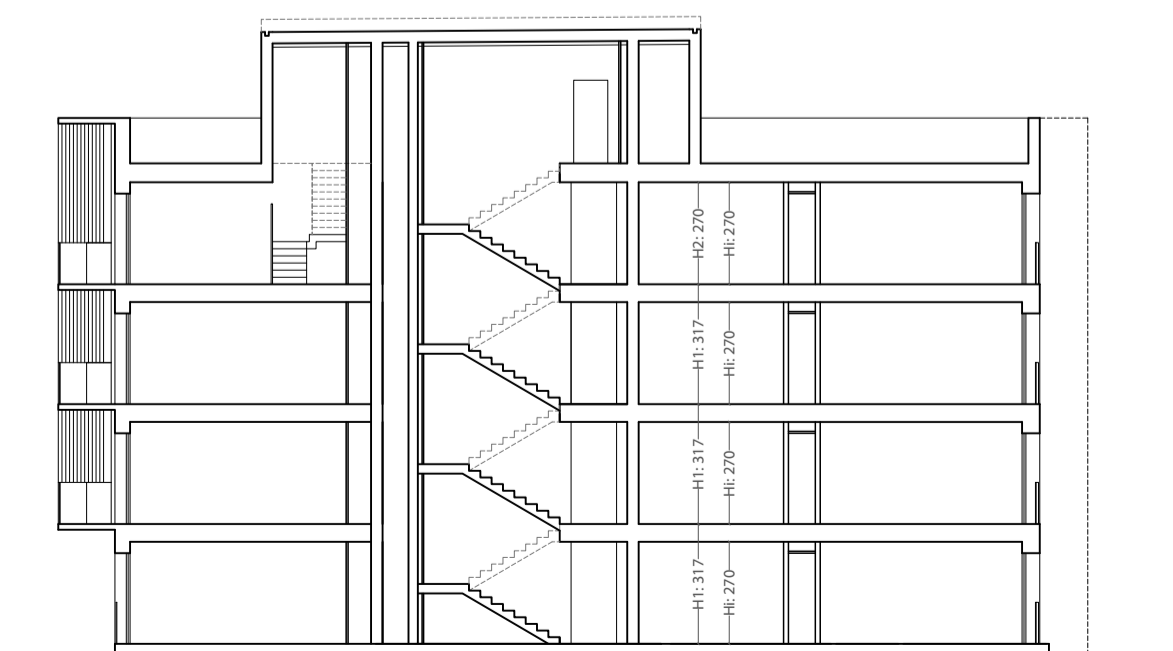
COLLABORATORI: Arch. Andrea Pierattelli  
Dott. Arch. Tommaso Greco  
Arch. Paola Grieco  
Arch. Mirko Lepri  
Arch. Antonio Saporito

PROJECT MANAGER:

NOTE DI PROPRIETA' E DATI INVESTIRE:



Sezione N-1



Sezione N-2