

1145000

1150000

1155000

1160000

1165000

5420000  
5420000  
5420000  
5420000  
5410000  
5410000  
5410000  
5400000  
5400000  
5400000  
5400000

5420000  
5420000  
5420000  
5420000  
5410000  
5410000  
5410000  
5400000  
5400000  
5400000  
5400000



Comune di Pisa

# ANALISI E APPROFONDIMENTI QUADRO CONSCIVO PIANO STRUTTURALE GEOLOGICO - TECNICA

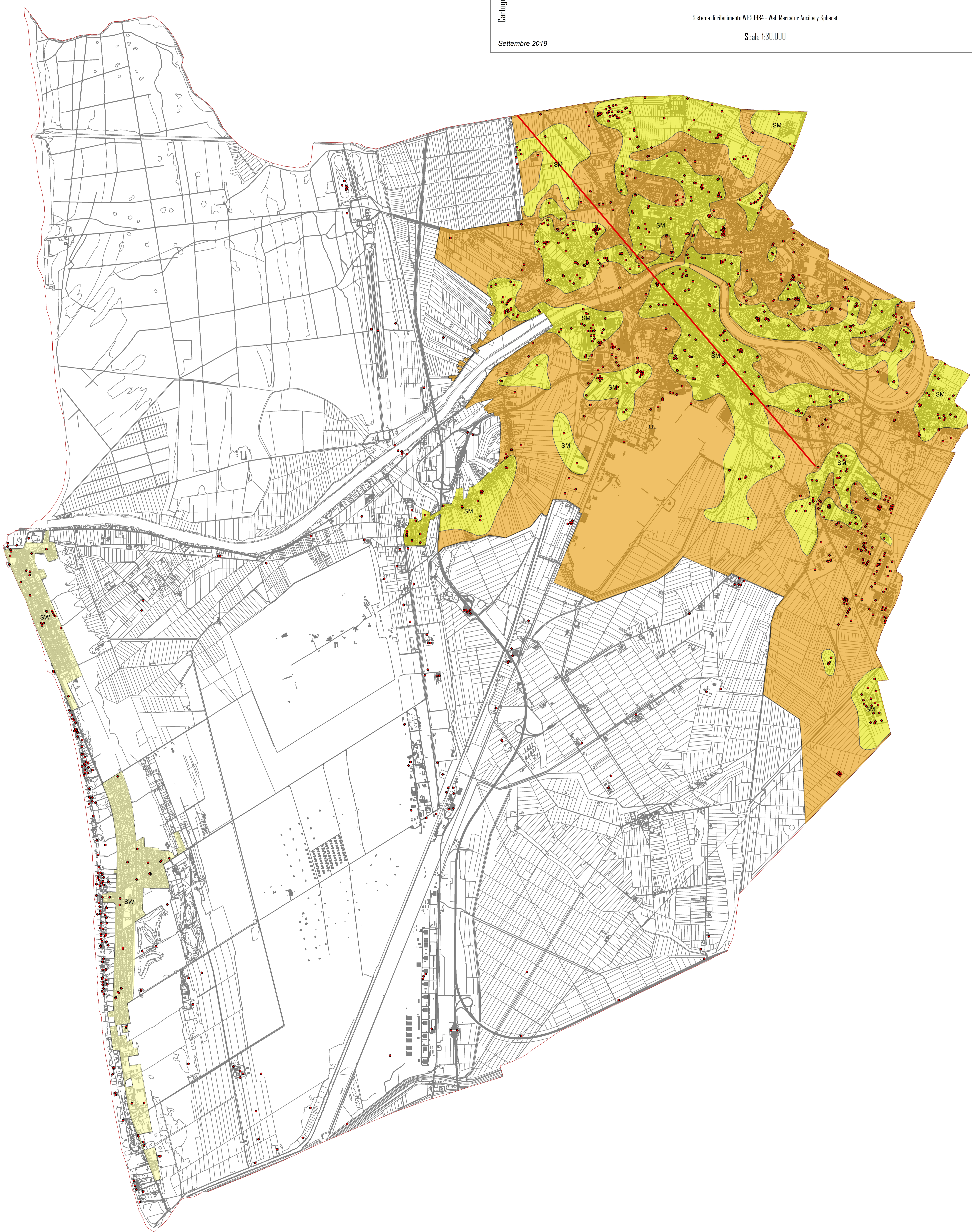
Sistema di riferimento WGS 1984 - Web Mercator Auxiliary Spheroid






Scala 1:30.000

Cartografia Sintetica

Settembre 2019

Ufficio Ambiente



-  Faglie capaci (ITHACA)
-  SW - Sabbie pulite e ben assortite
-  SM - Sabbie limose, miscela di sabbia e limo
-  OL - Limi organici, argille limose organiche di bassa plasticità
-  Limite Amministrativo Comune di Pisa

1145000

1150000

1160000

1165000