

N. 19
15 MAR. 2002



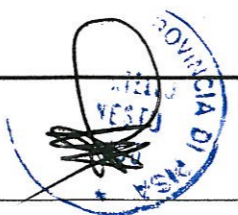
IL FUNZIONARIO
(TOMEI C. ALBERTO)

01



AC HOTEL PISA

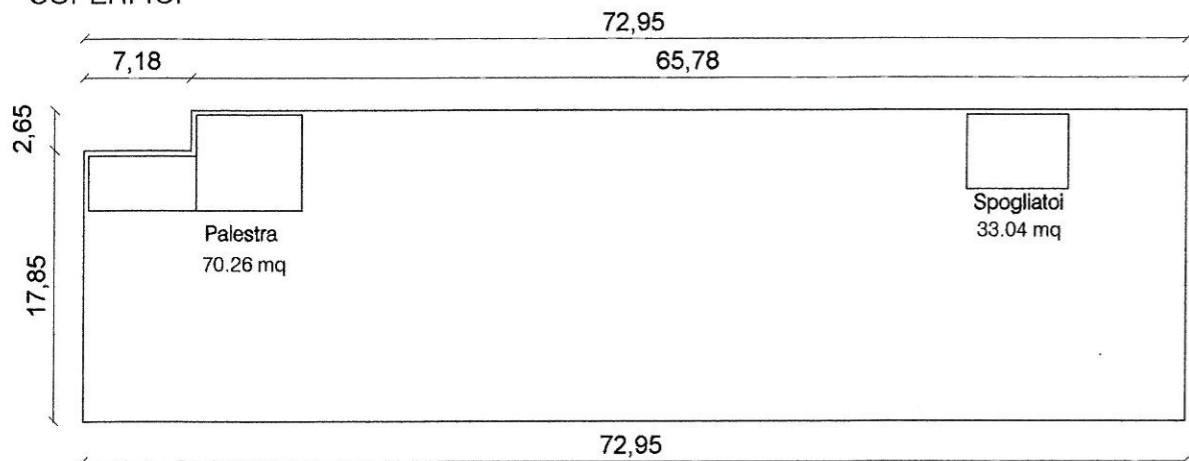
ARCH. GIOVANNI CARIGNANI
ARCH. ERNESTO MUSCATELLO



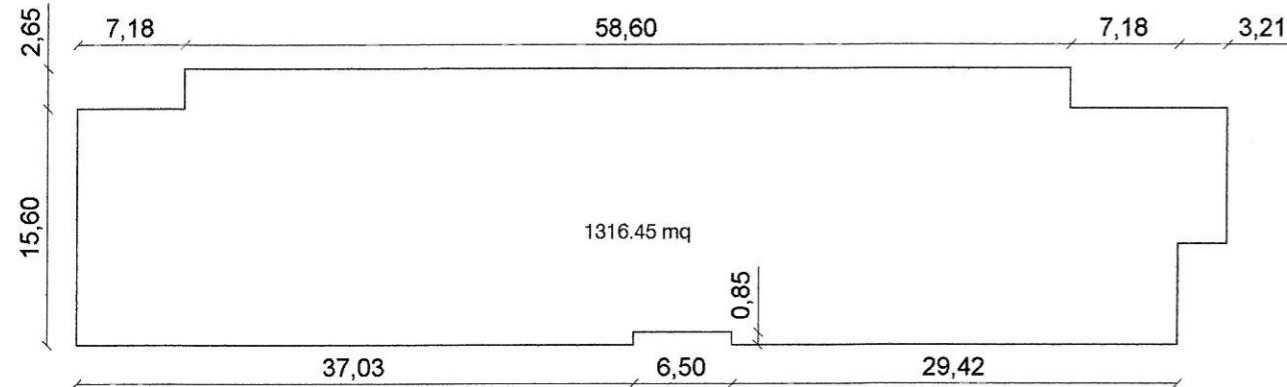
PLANIMETRIA GENERALE
SCALA 1:500

| | | | | | |
|----------------------------------|--|-----------------------------------|---------------------------------|-------------------------------|----------------------------|
| SUP. UTILE LORDA MAX 6.200 mq | SUP. UTILE LORDA DI PROGETTO 5654.05 mq | ALTEZZA MASSIMA 16.60 ml | ALTEZZA DI PROGETTO 16.30 ml | AREA COPRIBILE 1672.50 mq | AREA COPERTA 1316.45 mq |
| SUL max > SUL di progetto | | ALTEZZA max > ALTEZZA di progetto | | AREA COPRIBILE > AREA COPERTA | |

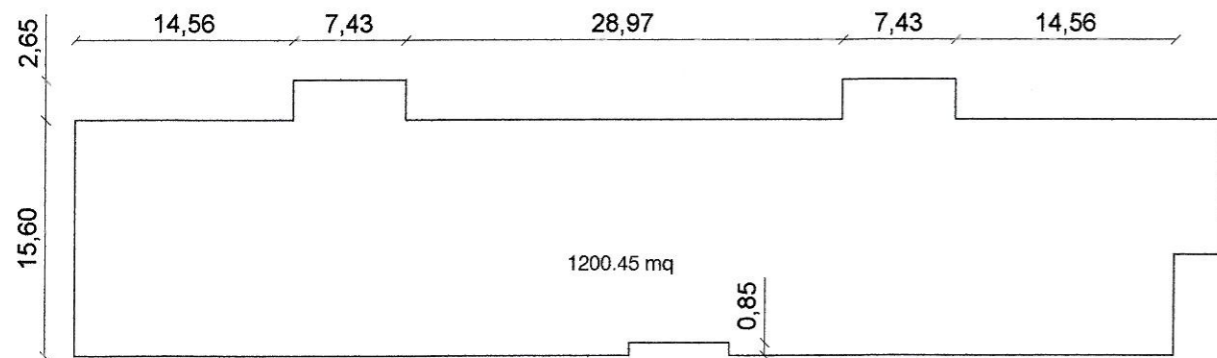
SUPERFICI



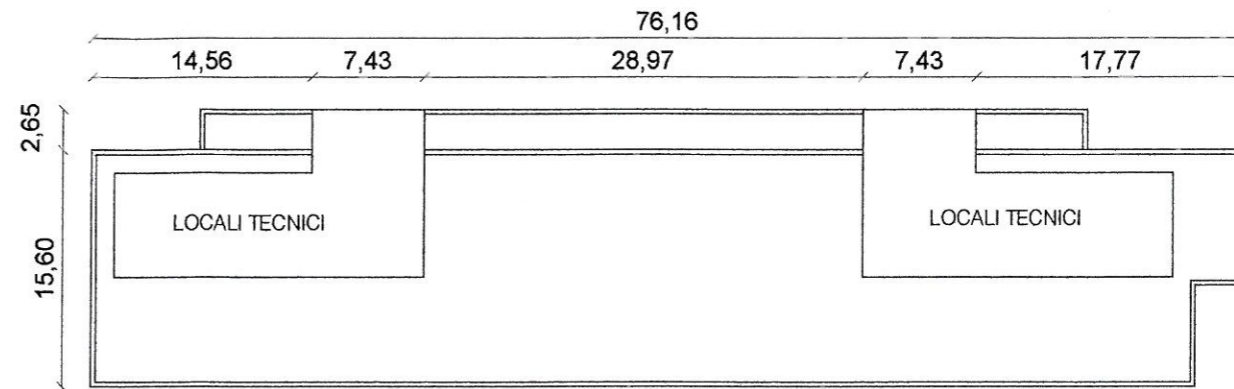
PIANO INTERRATO SUPERFICIE LORDA UTILE: 103.30 mq



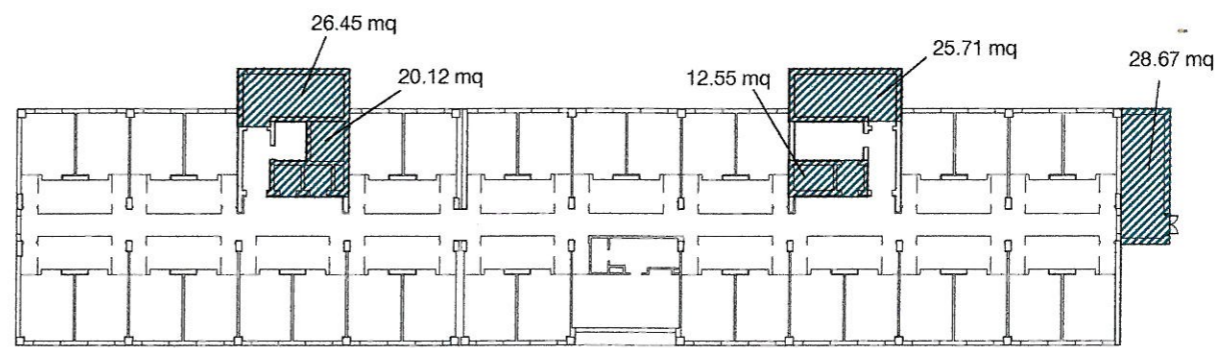
PIANO HALL SUPERFICIE TOTALE LORDA : 1316.45 mq



PIANI CAMERE SUPERFICIE TOTALE LORDA: 1200.45 mq



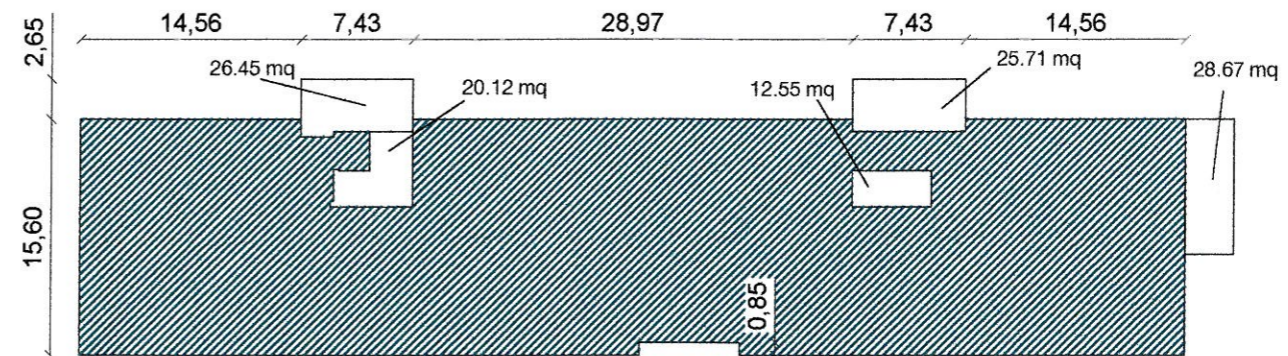
PIANO COPERTURA: SUPERFICIE LORDA UTILE: 0.00 mq



SUPERFICIE ACCESSORIA (vani scale, ascensori, cavedi)

$$26.45 + 20.12 + 12.55 + 25.71 + 28.67 = 113.50 \text{ mq}$$

DA SOTTRARRE ALLA SUPERFICIE DEL PIANO HALL E PIANI DI CAMERE



$$\text{PIANO HALL: SUPERFICIE TOTALE - SUPERFICIE ACCESSORIA : } 1316.45 - 113.50 = 1202.95 \text{ mq}$$

$$\text{PIANI CAMERE: SUPERFICIE TOTALE - SUPERFICIE ACCESSORIA : } 1200.45 - 113.50 = 1086.95 \text{ mq}$$

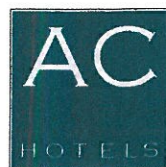
$$\text{SUPERFICIE UTILE LORDA: P. HALL + PIANI CAMERE + INTERRATO : } 5654.05 \text{ mq}$$

$$\text{VOLUME TOTALE } 19951.80 \text{ mc (altezza } 16.30 \text{ m)}$$

CALCOLO DELLE SCALE SECONDO L'ART. 28.1 DEL R.E. DEL COMUNE DI PISA

SUPERFICIE PIANI CAMERE 1086.95mq < 1100 mq SONO NECESSARIE 3 SCALE

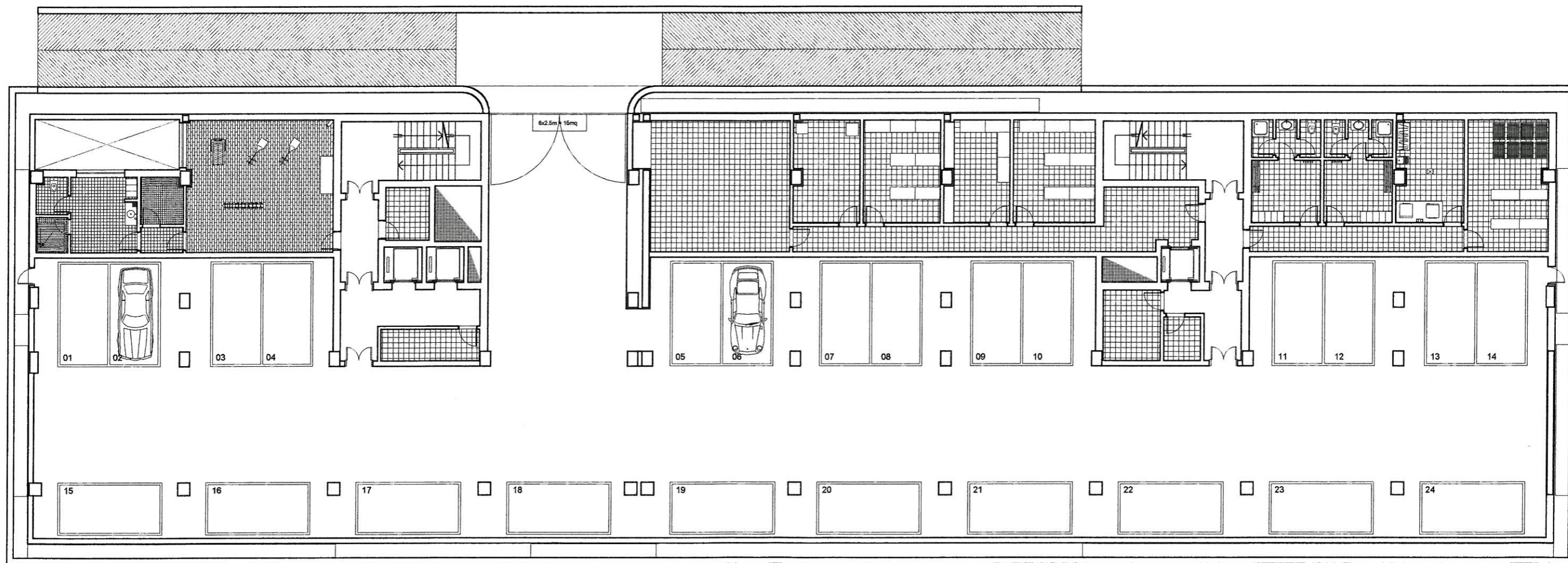
SI FA RIFERIMENTO SOLO AI PIANI DA SERVIRE; CONSEGUENTEMENTE NON VIENE PRESO IN ESAME IL PIANO TERRA. PER I PIANI CAMERE, COMPUTANDO LA SUPERFICIE TOTALE LORDA DEL PIANO (1200.45 MQ), DETRAENDO LA SUPERFICIE DEI VANI ACCESSORI (113.50 MQ) (VANI SCALE, CAVEDI, ASCENSORI) RISULTA CHE LA SUPERFICIE UTILE LORDA TOTALE DEL PIANO E' DI 1086.95 MQ, INFERIORE AI 1100 MQ E QUINDI SECONDO L'ART. 28.1 SONO NECESSARIE 3 SCALE.



AC HOTEL PISA

ARCH. GIOVANNI CARIGNANI
ARCH. ERNESTO MUSCATELLO



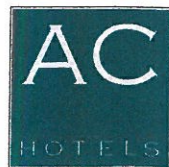
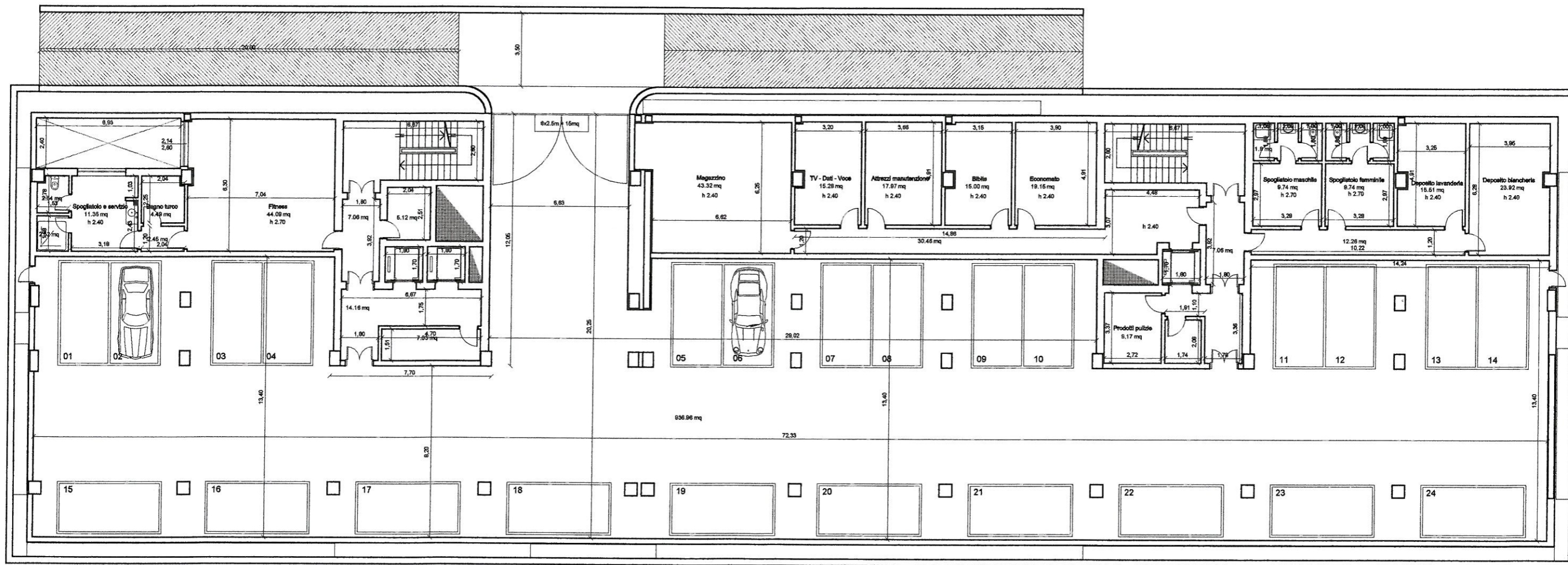


AC HOTEL PISA

ARCH. GIOVANNI CARIGNANI
ARCH. ERNESTO MUSCATELLO



PIANTA PIANO INTERRATO ARREDATA
SCALA 1:200



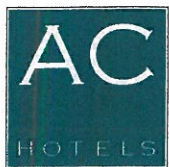
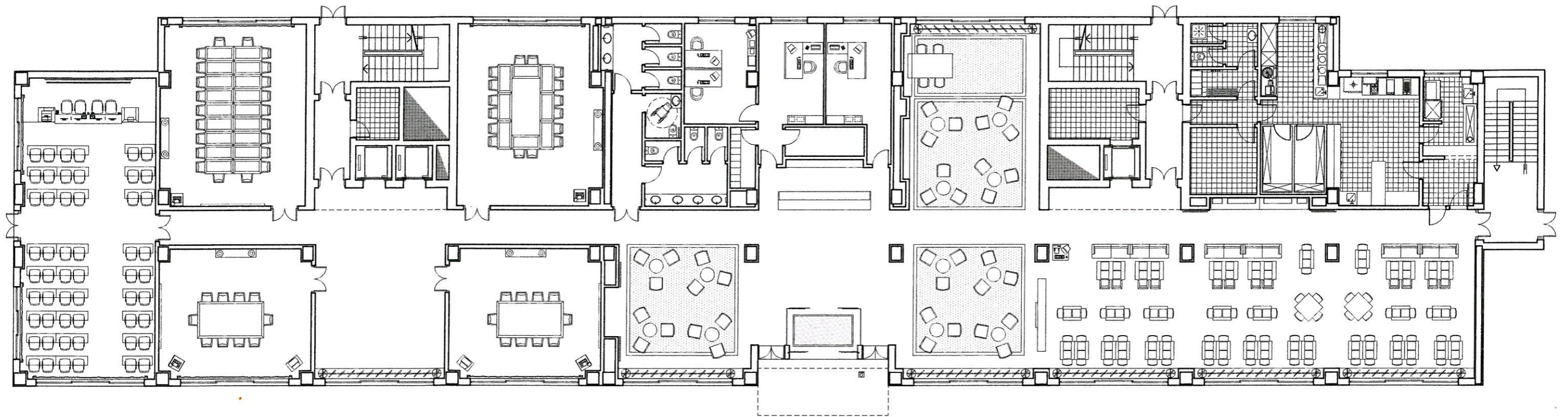
AC HOTEL PISA

ARCH. GIOVANNI CARIGNANI
ARCH. ERNESTO MUSCATELLO



PIANTA PIANO INTERRATO QUOTATA

SCALA 1:200

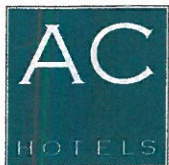
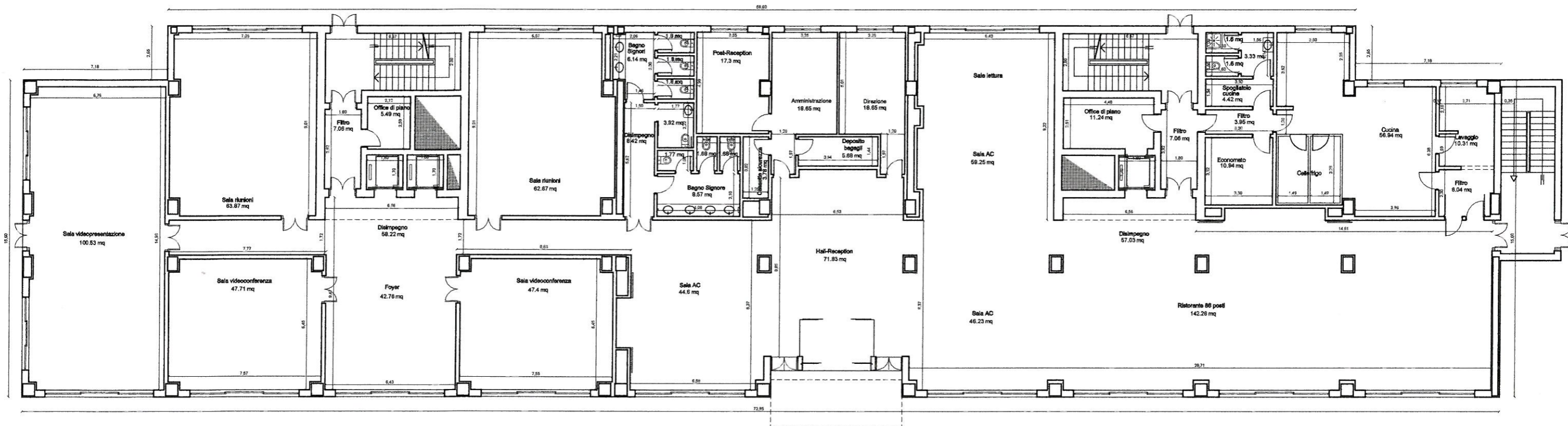


AC HOTEL PISA

ARCH. GIOVANNI CARIGNANI
ARCH. ERNESTO MUSCATELLI

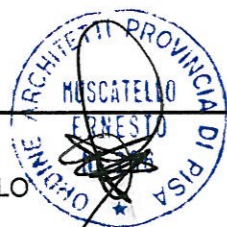


PIANTA PIANO TERRA ARREDATA
SCALA 1:200



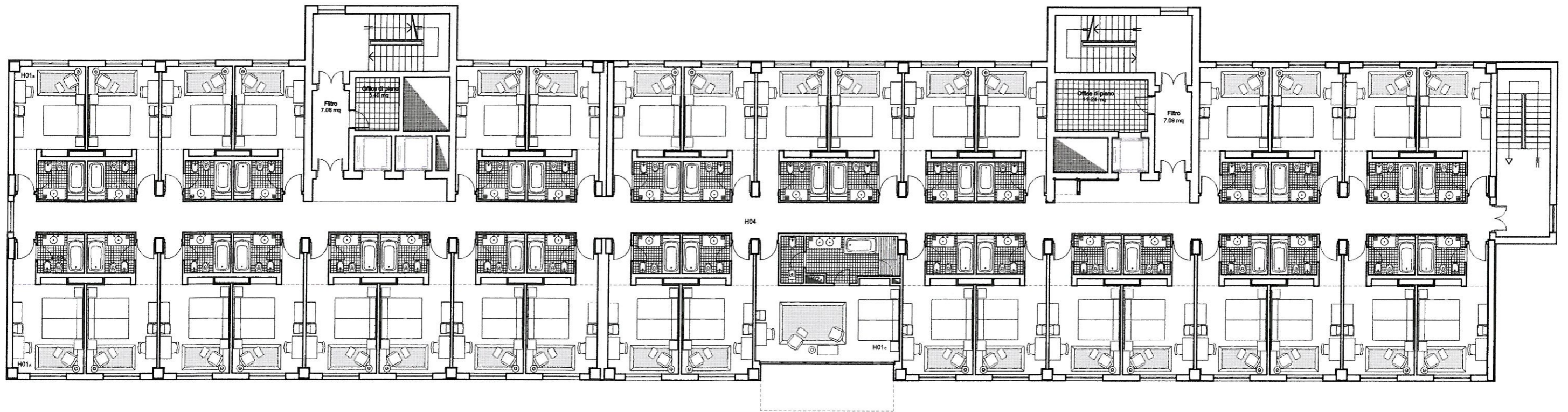
AC HOTEL PISA

ARCH. GIOVANNI CARIGNANI
ARCH. ERNESTO MUSCATELLO



06

PIANTA PIANO TERRA QUOTATA
SCALA 1:200



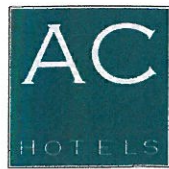
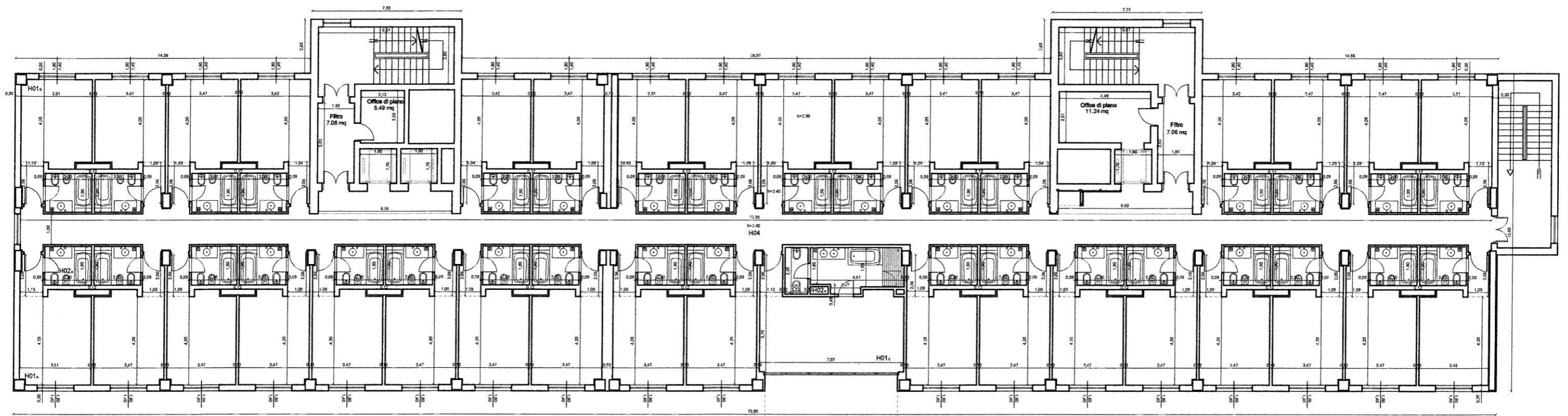
AC HOTEL PISA

ARCH. GIOVANNI CARIGNANI
ARCH. ERNESTO MUSCATELLO



PIANTA PIANO CAMERE TIPO ARREDATA

SCALA 1:200



AC HOTEL PISA

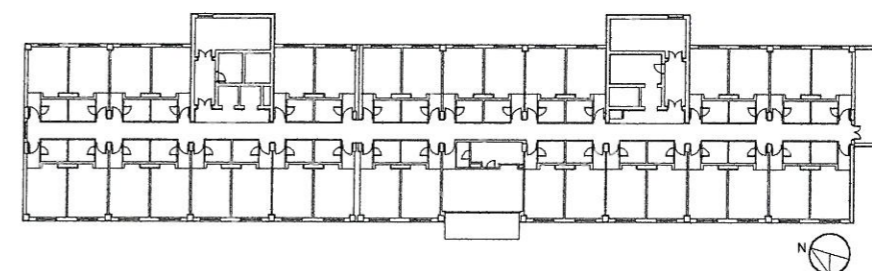
ARCH. GIOVANNI CARIGNANI
ARCH. ERNESTO MUSCATELLO



PIANTA PIANO CAMERE TIPO QUOTATA
SCALA 1:200



Prospetto Ovest



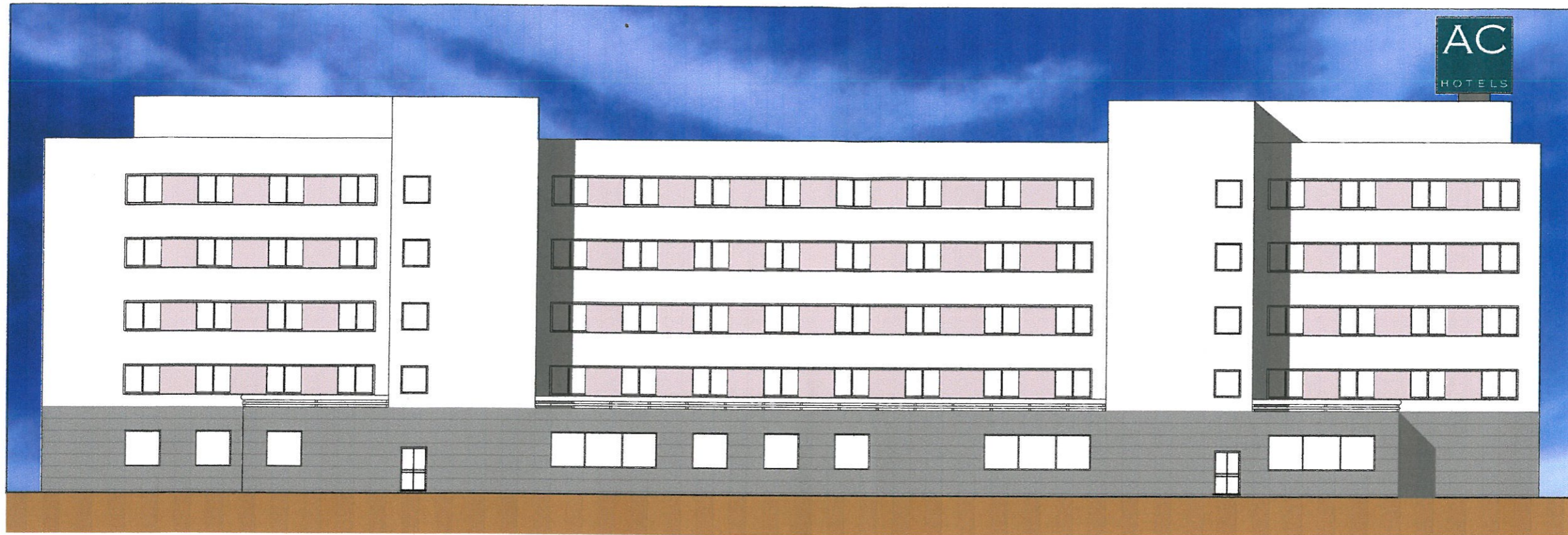
AC HOTEL PISA

ARCH. GIOVANNI CARIGNANI
ARCH. ERNESTO MUSCATELLO

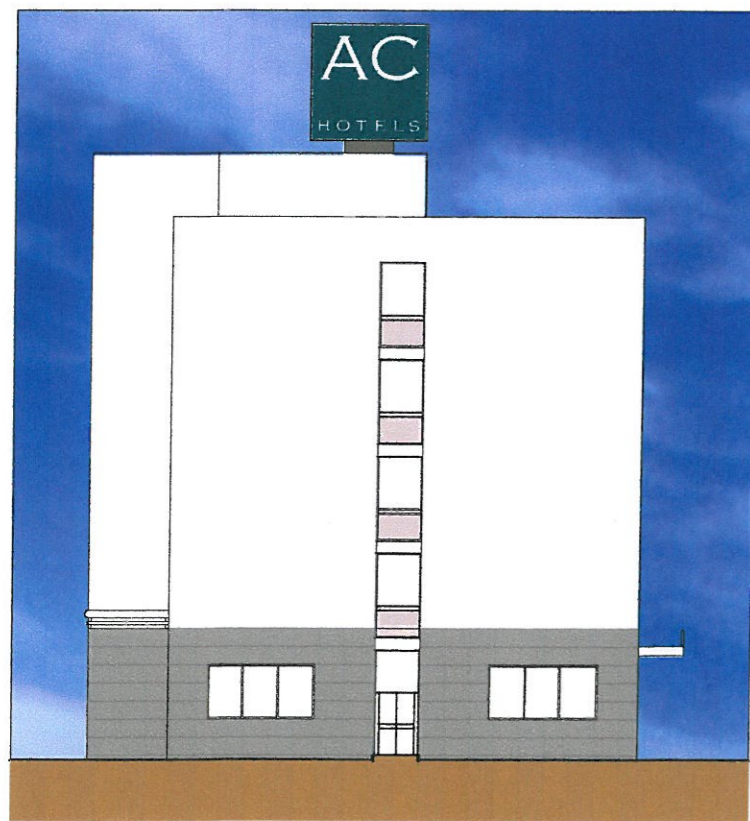


09

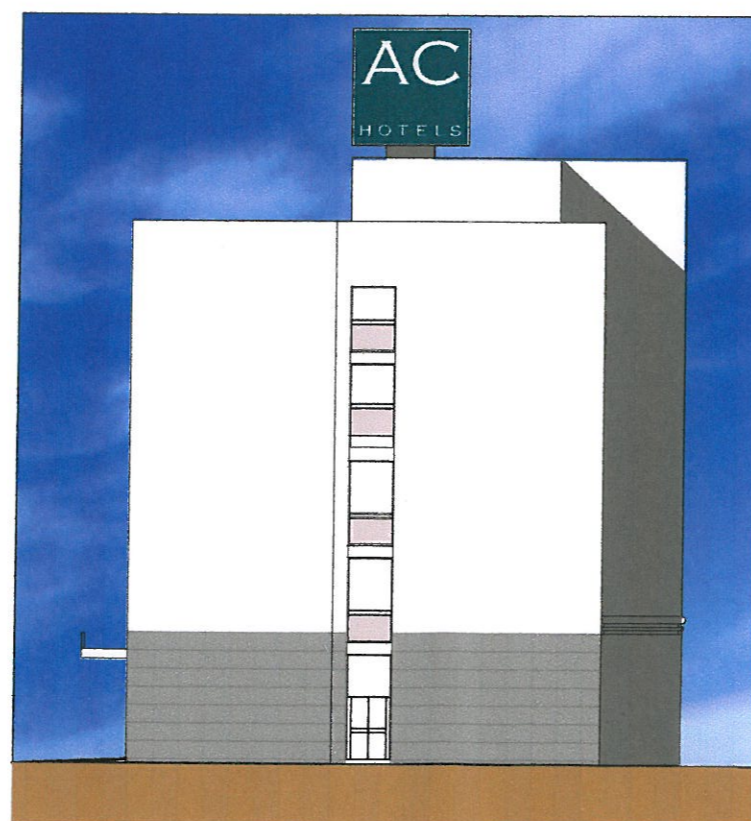
PROSPETTI
SCALA 1:250



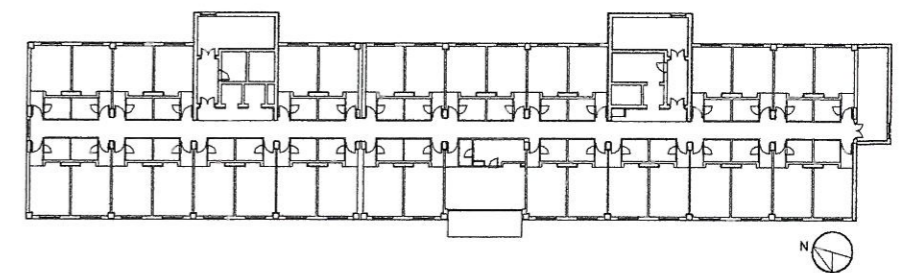
Prospetto Est



Prospetto Nord



Prospetto Sud

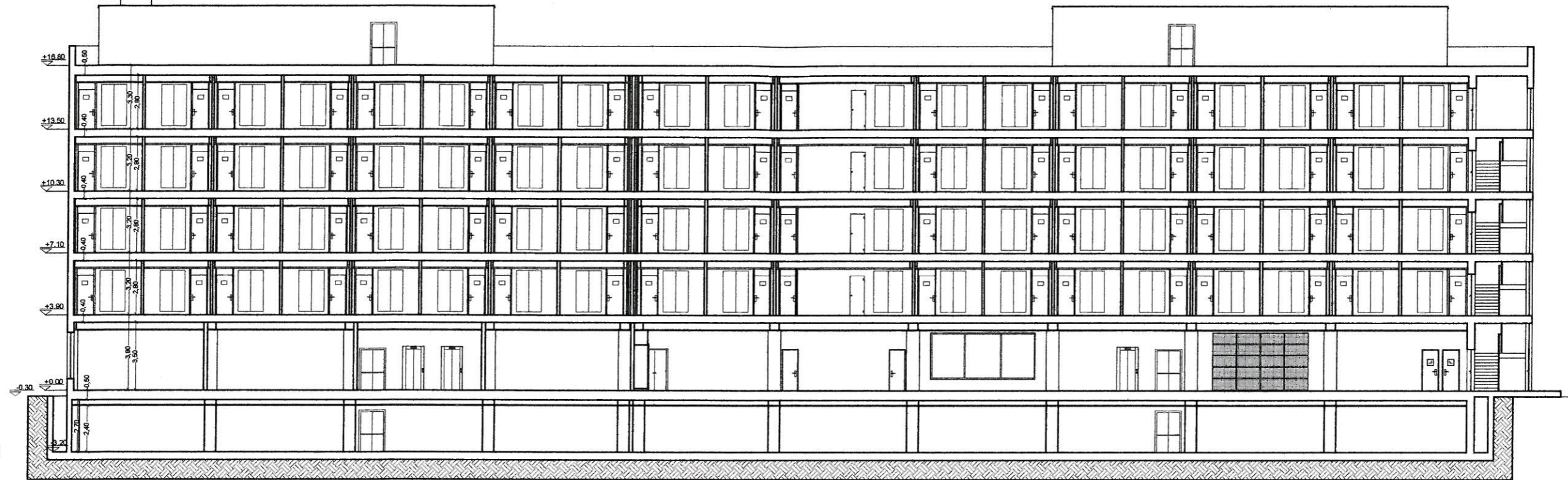


AC HOTEL PISA

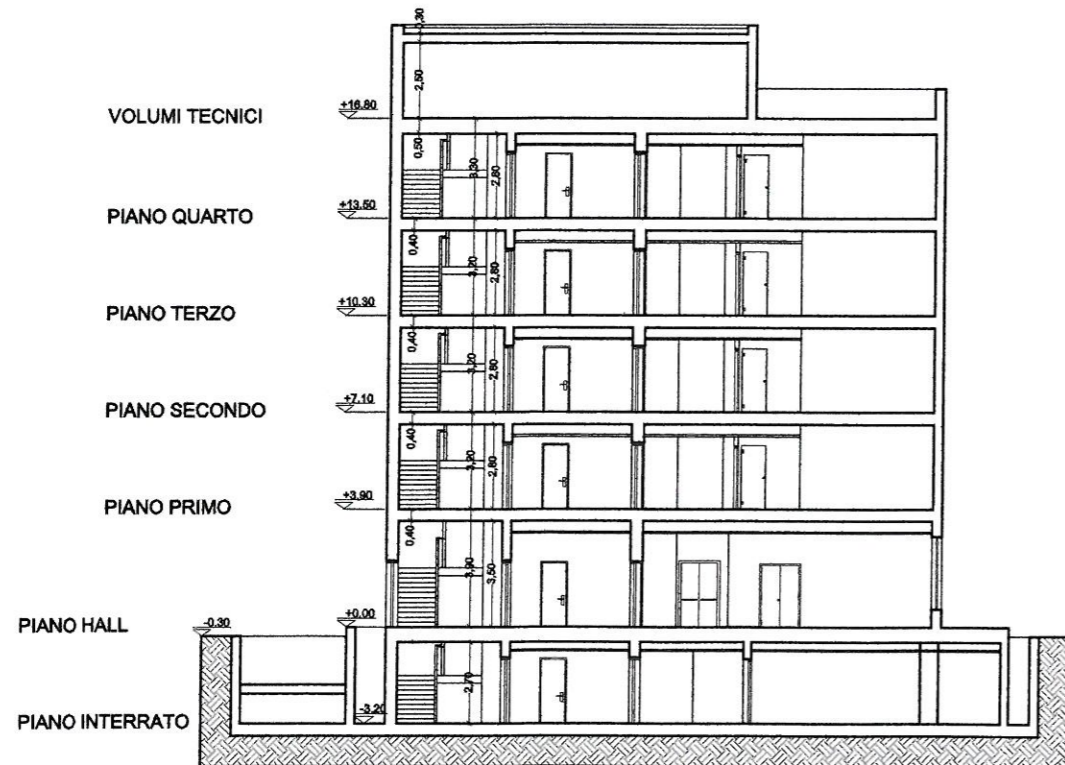
ARCH. GIOVANNI CARIGNANI
ARCH. ERNESTO MUSCATELLO



VOLUMI TECNICI
PIANO QUARTO
PIANO TERZO
PIANO SECONDO
PIANO PRIMO
PIANO HALL
PIANO INTERRATO



Sezione A - A'



Sezione B - B'

