

Attuazione di Piano Particolareggiato con contestuale variante alla Scheda Norma 7.7



Tavola 1: Rilievo fotografico
Tavola 2: Estratto Catastale - Estratto RU
Tavola 3: Individuazione Catastale - Rilievo strumentale
Tavola 4: Estratto aereofotogrammetrico attuale
Tavola 5: Estratto aereofotogrammetrico modificato
Tavola 6: Dimensionamento e sistemazione aree
Tavola 7: Allineamenti e distanze
Tavola 8: Planimetria generale di progetto
Tavola 9: Tipologia lotto "A" (PEEP) piante p.t. - p.1°
Tavola 10: Tipologia lotto "A" (PEEP) piante p.2°-p.3°
Tavola 11: Tipologia lotto "A" (PEEP) piante p.4°-p.copertura

Tavola 12: Profili lotto "A"
Tavola 13: Sezioni lotto "A"
Tavola 14: Tipologia lotto "B" piante p.t.-p.1°
Tavola 15: Tipologia lotto "B" piante p.2°-p.3°
Tavola 16: Tipologia lotto "B" piante p.4°-p.copertura
Tavola 17: Profili lotto "B"
Tavola 18: Sezioni lotto "B"
Tavola 19: Opere di Urbanizzazione - Fognatura Bianca
Tavola 20: Opere di Urbanizzazione - Fognatura Nera
Tavola 21: Opere di Urbanizzazione - Acquedotto - Gas
Tavola 22: Opere di Urbanizzazione - Enel - Telecom





A- Via delle Torri



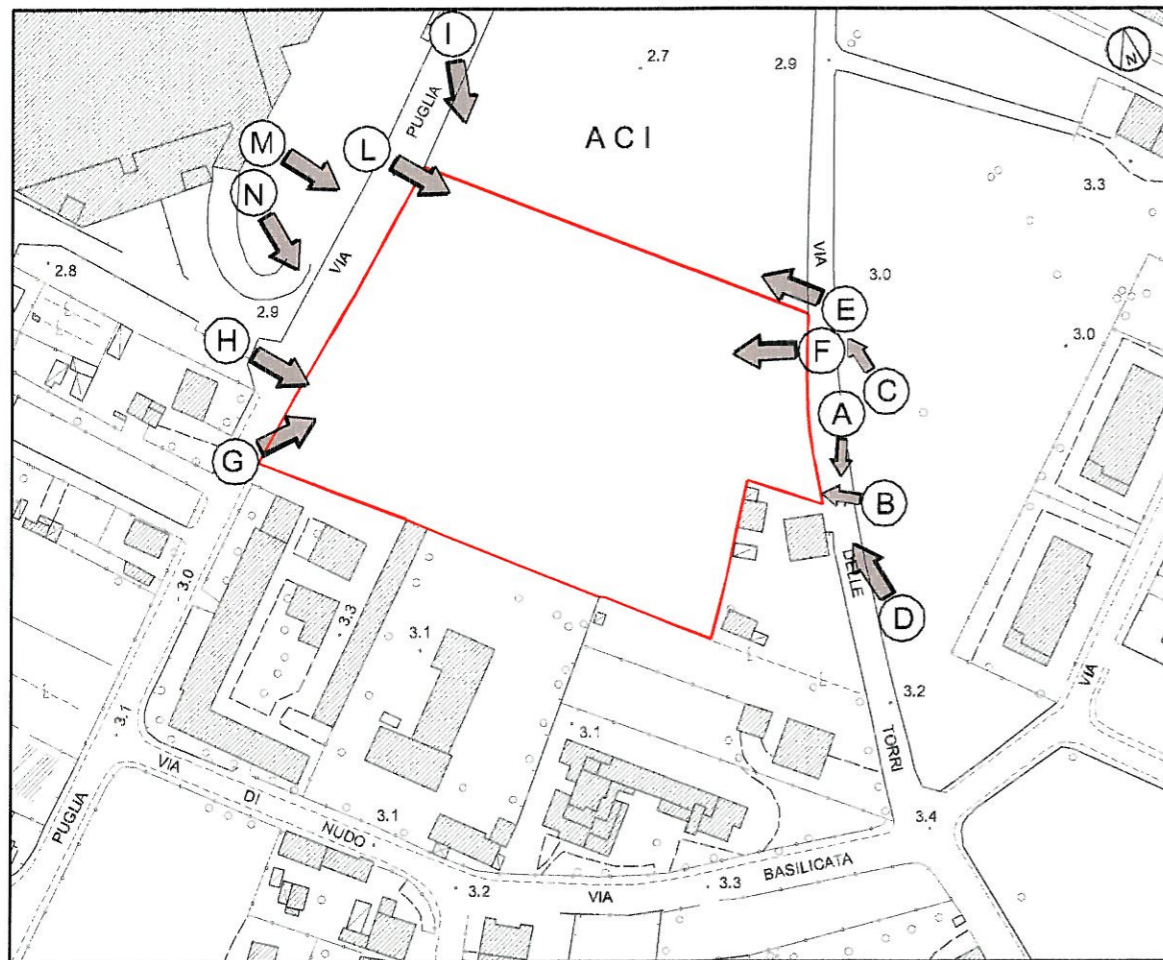
B- Via delle Torri



C- Via delle Torri



D- Via delle Torri



STATO ATTUALE

scala 1:2000



E- Via delle Torri (nord)



F- Via delle Torri



G- Via delle Torri



H- Via Puglia (alto)



I- Via Puglia (ACI)



L- Via Puglia (nord)



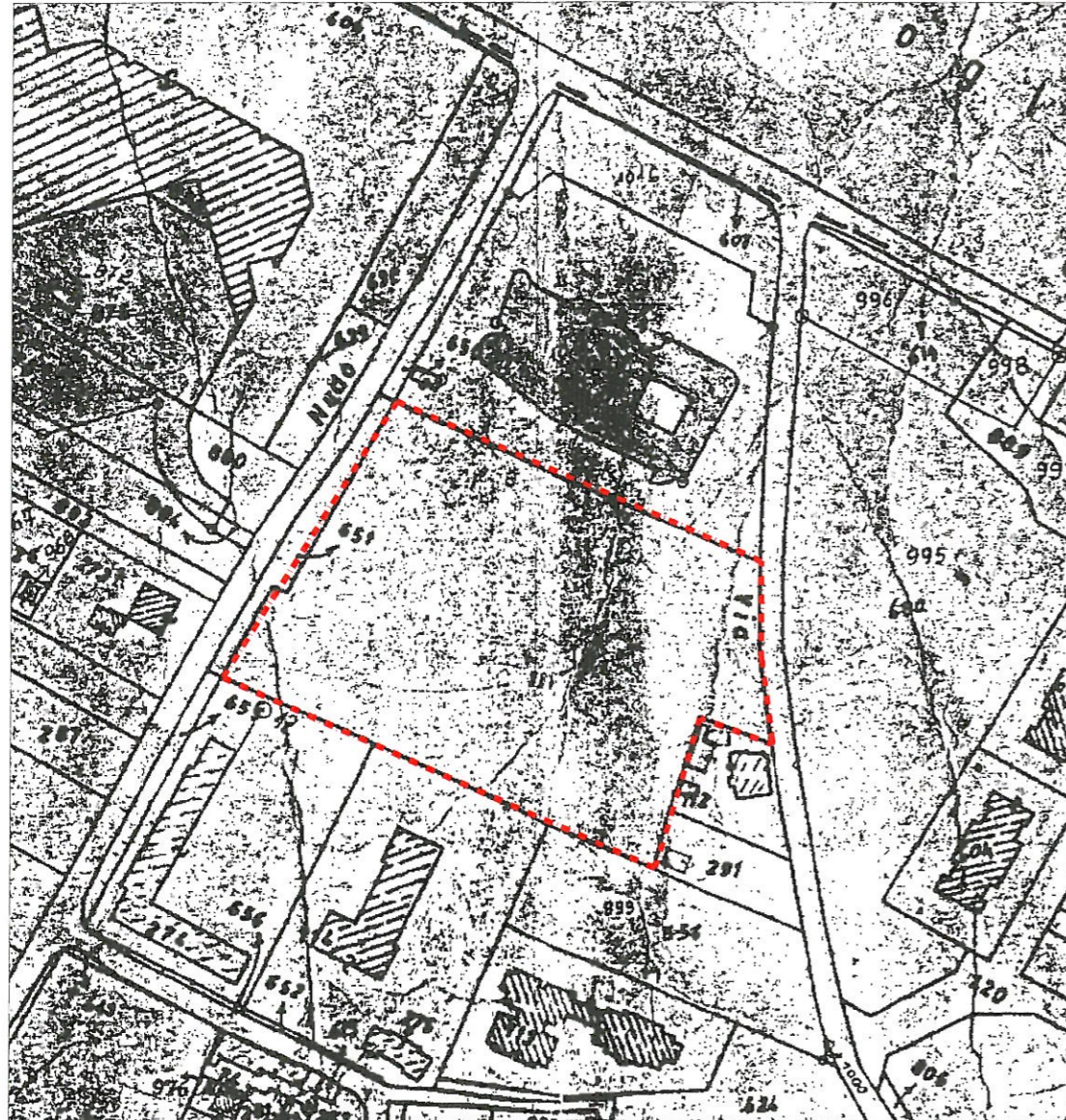
M- Via Puglia



N- Via Puglia (sud)



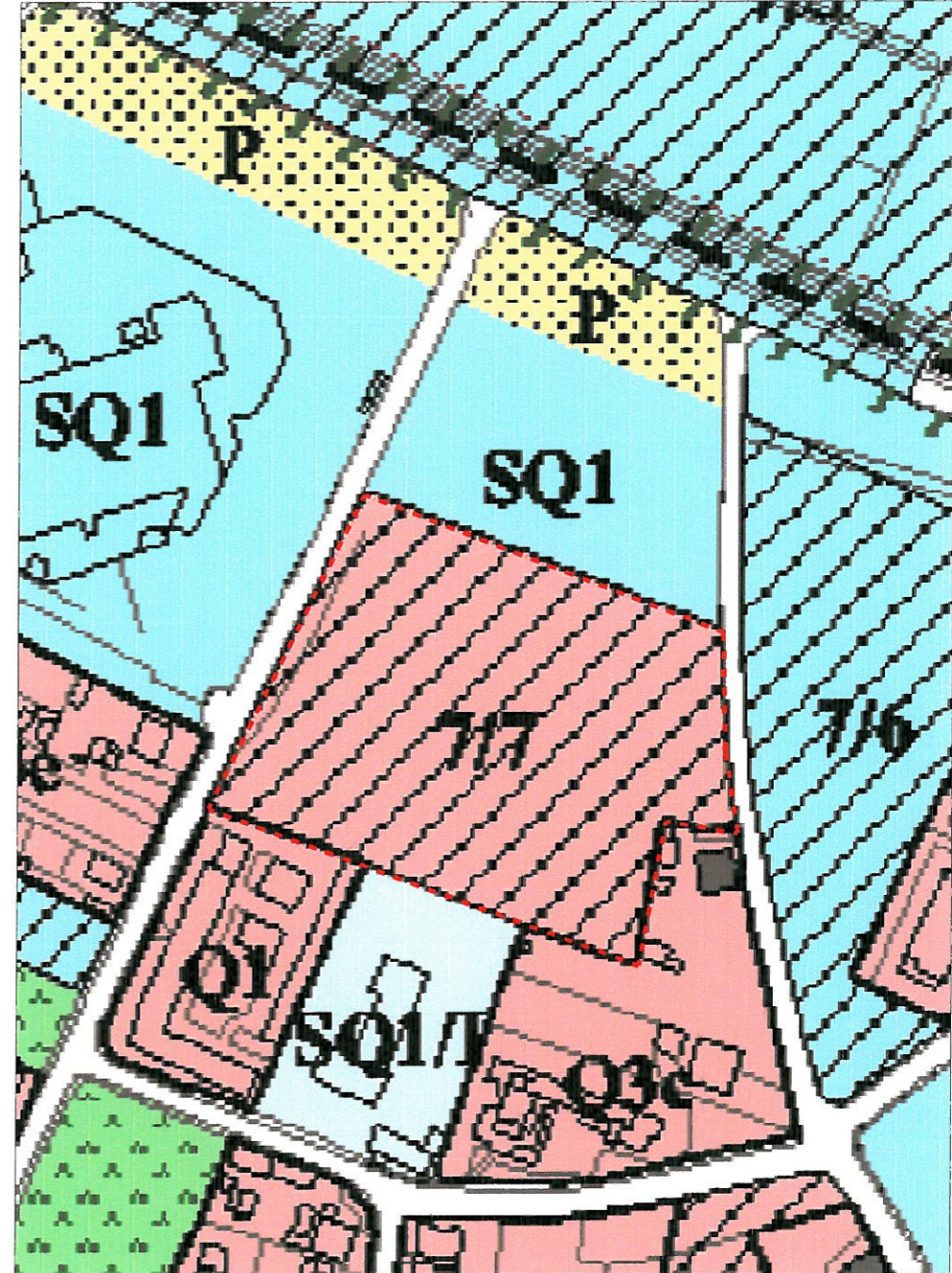
ESTRATTO DI MAPPA CATASTALE



----- Perimetro di P.P.

scala 1:2000

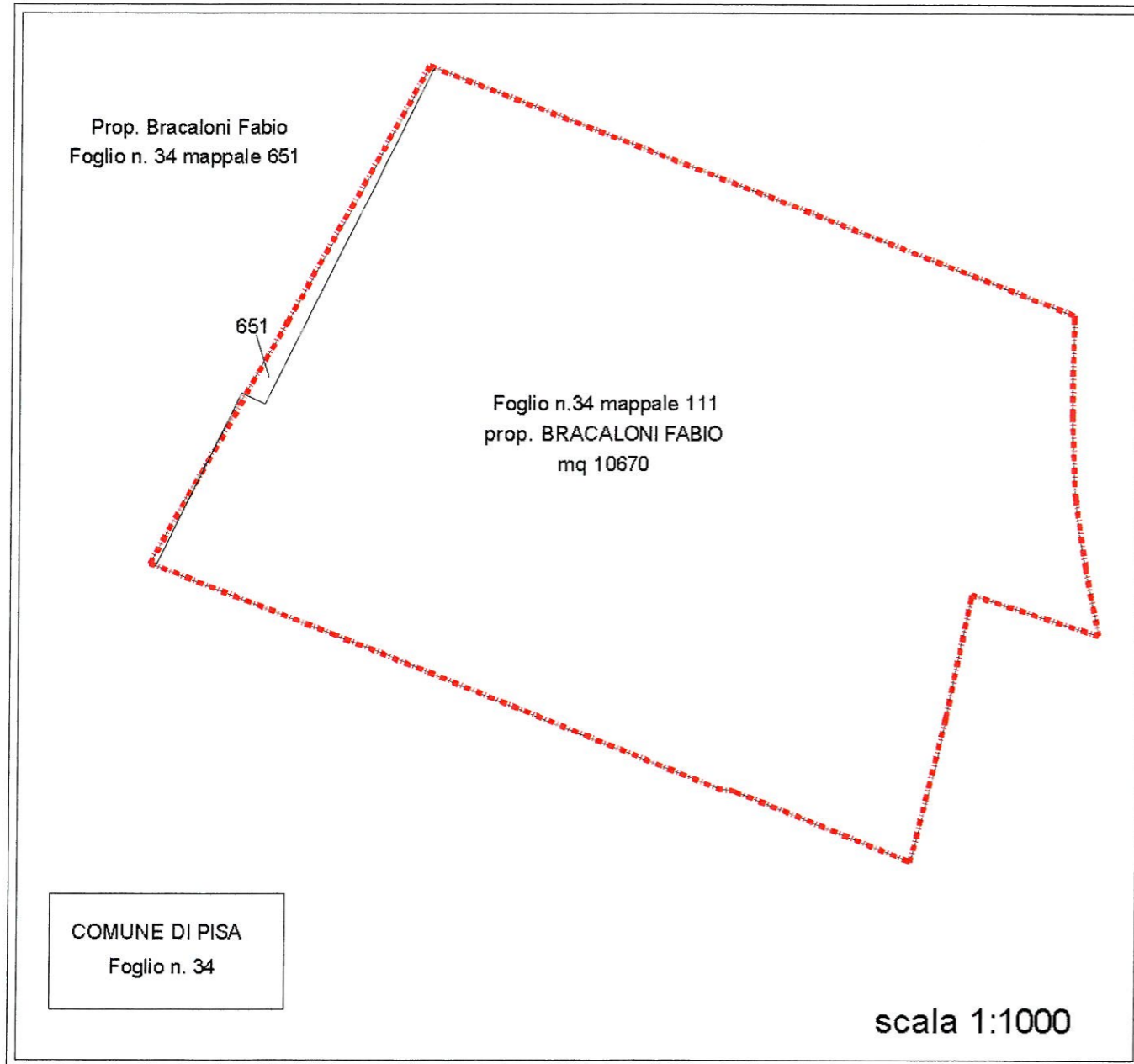
ESTRATTO DI REGOLAMENTO URBANISTICO



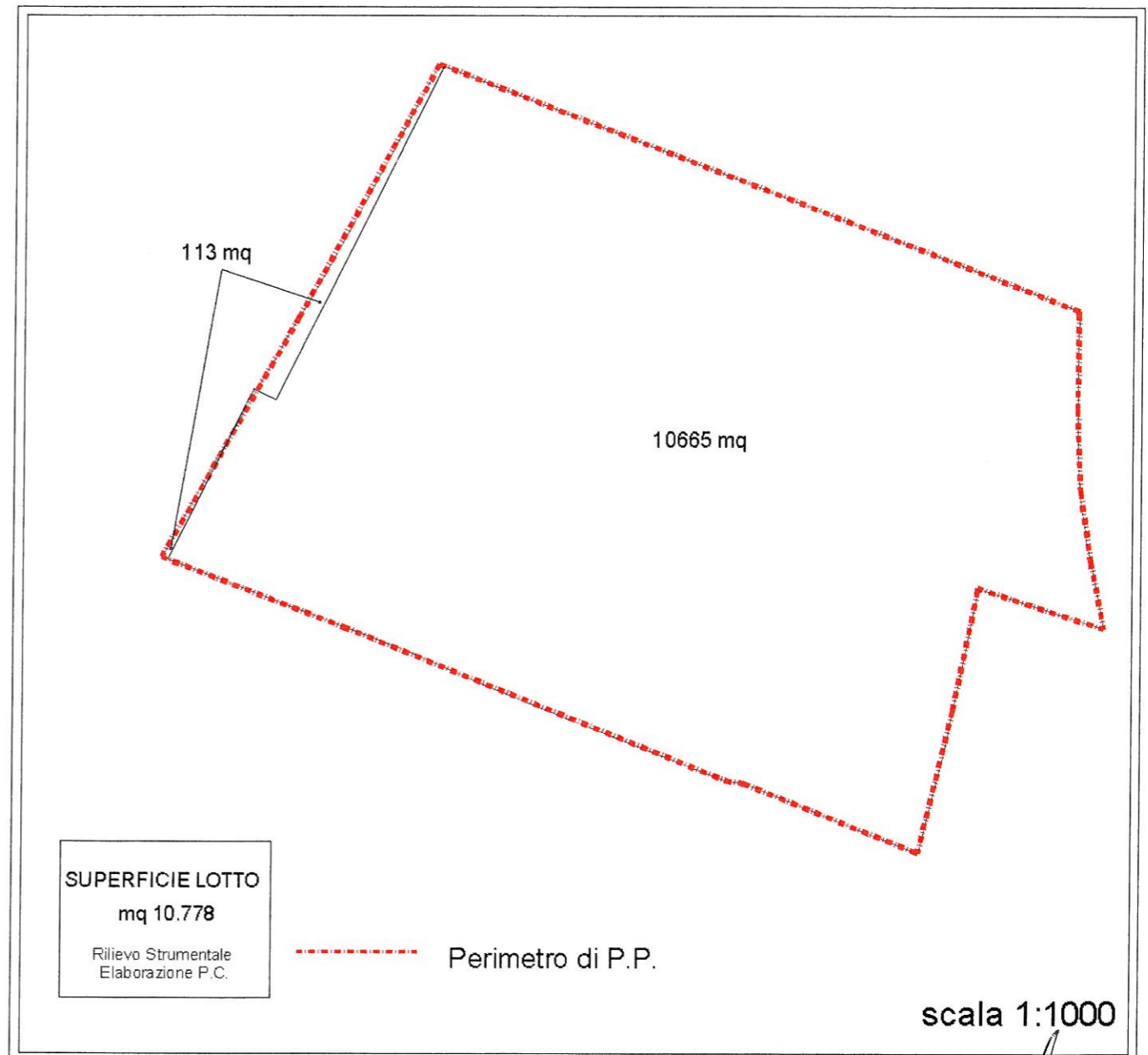
scala 1:2000



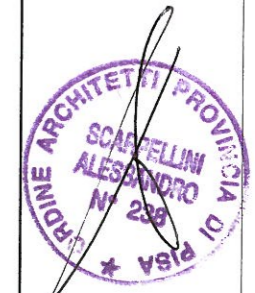
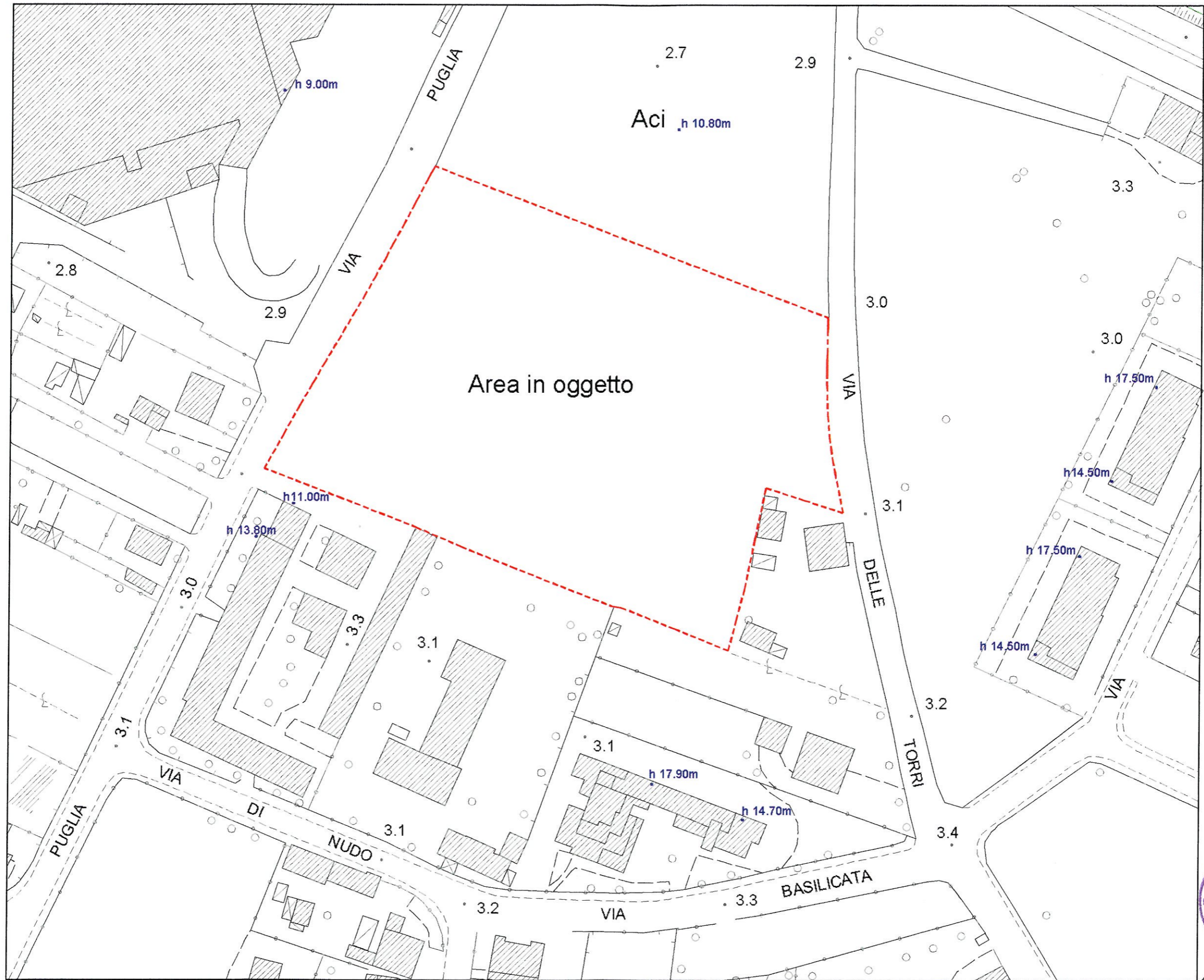
INDIVIDUAZIONE CATASTALE



RILIEVO STRUMENTALE



h 11.00m : rilevazione altezze fabbricati limitrofi
- - - : perimetro del piano particolareggiato





DIMENSIONAMENTO e SISTEMAZIONI AREE

SCHEDA-NORMA 7.7 PER LE AREE DI TRASFORMAZIONE SOGGETTE A PIANO ATTUATIVO

SUPERFICIE TERRITORIALE	MQ	12.400
SUP. FONDIARIA MAX (50% SUP.TER.)	MQ	6.200
SUPERFICIE LORDA UTILE	MQ	4800
ALTEZZA MAX	ML	12.50
RAPPORTO DI COPERTURA		25%
VERDE E PARCHEGGI PUBBLICI (50% SUP.TER.)	MQ	6.200

DATI DI PROGETTO E DI VARIANTE ALLA SCHEDA NORMA

SUPERFICIE TERRITORIALE	MQ	10.778
SUP. FONDIARIA MAX (50% SUP.TER.)	MQ	5.389
Con Ifs = 0.8 sia ha SUPERFICIE LORDA UTILE	MQ	4311
SUP. di COPERTURA	MQ	1347
ALTEZZA MAX	ML	15.50
AREA PUBBLICA	MQ	5389

AREA PUBBLICA			
STRADA PUBBLICA + VERDE PUBBLICO + PARCHEGGI	mq 1282	+ mq 3446	+ mq 890 = mq 5618

S.L.U. LOTTO A(P.E.E.P.)

P.PRIMO	MQ	536.79
P.SECONDO	MQ	537.87
P.TERZO	MQ	490.79
P.QUARTO	MQ	528.21
SLU totale	MQ	2093.66

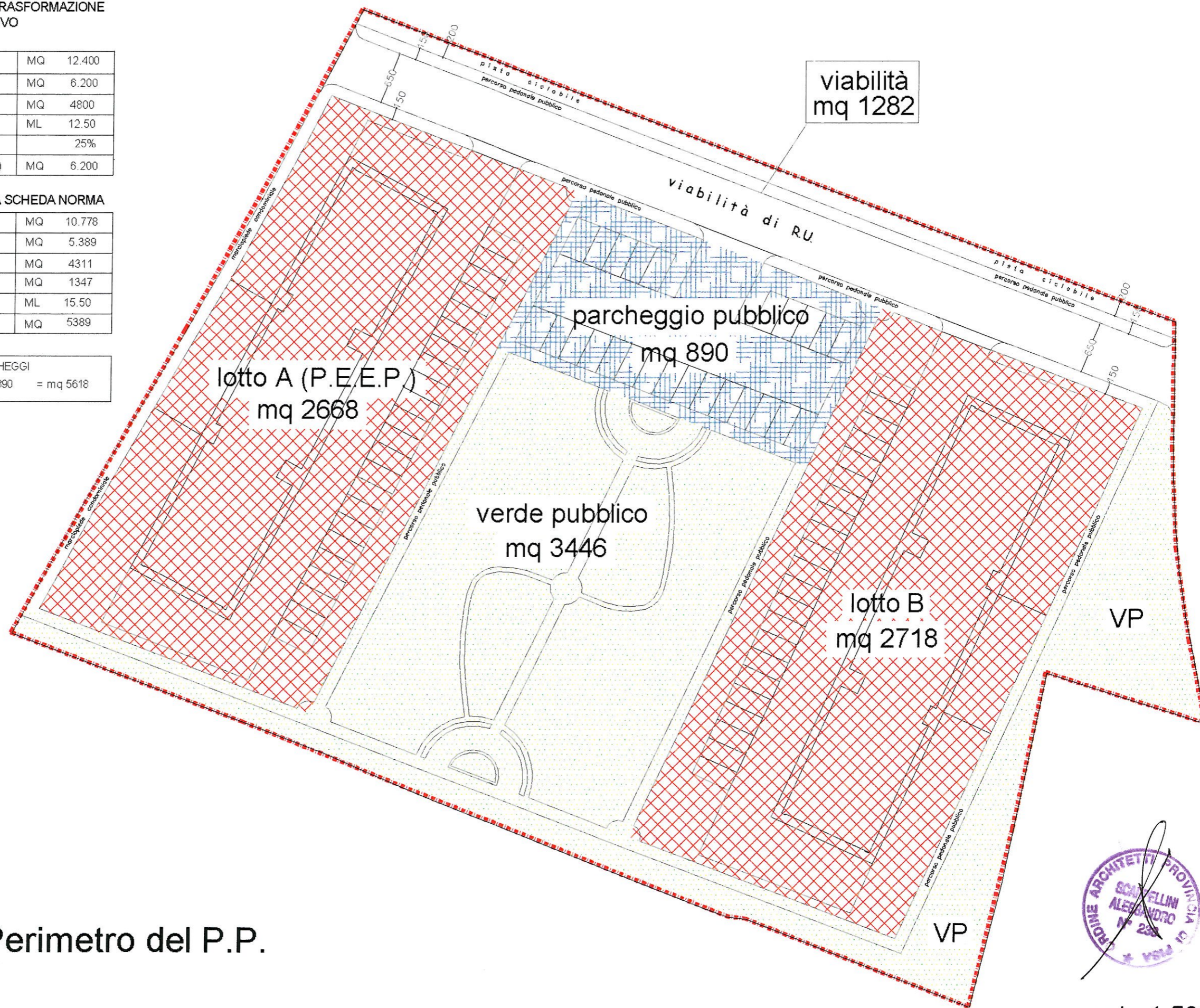
S.L.U. LOTTO B

P.PRIMO	MQ	536.79
P.SECONDO	MQ	537.87
P.TERZO	MQ	490.79
P.QUARTO	MQ	528.21
SLU totale	MQ	2093.66

SLU totale dei 2 edifici MQ 4187.32 < 4311

S.c.

Sup. coperta lotta A(P.E.E.P.)	MQ	655.16
Sup. coperta lotta B	MQ	655.16
Sup. coperta totale	MQ	1310.32 < 1347



Perimetro del P.P.

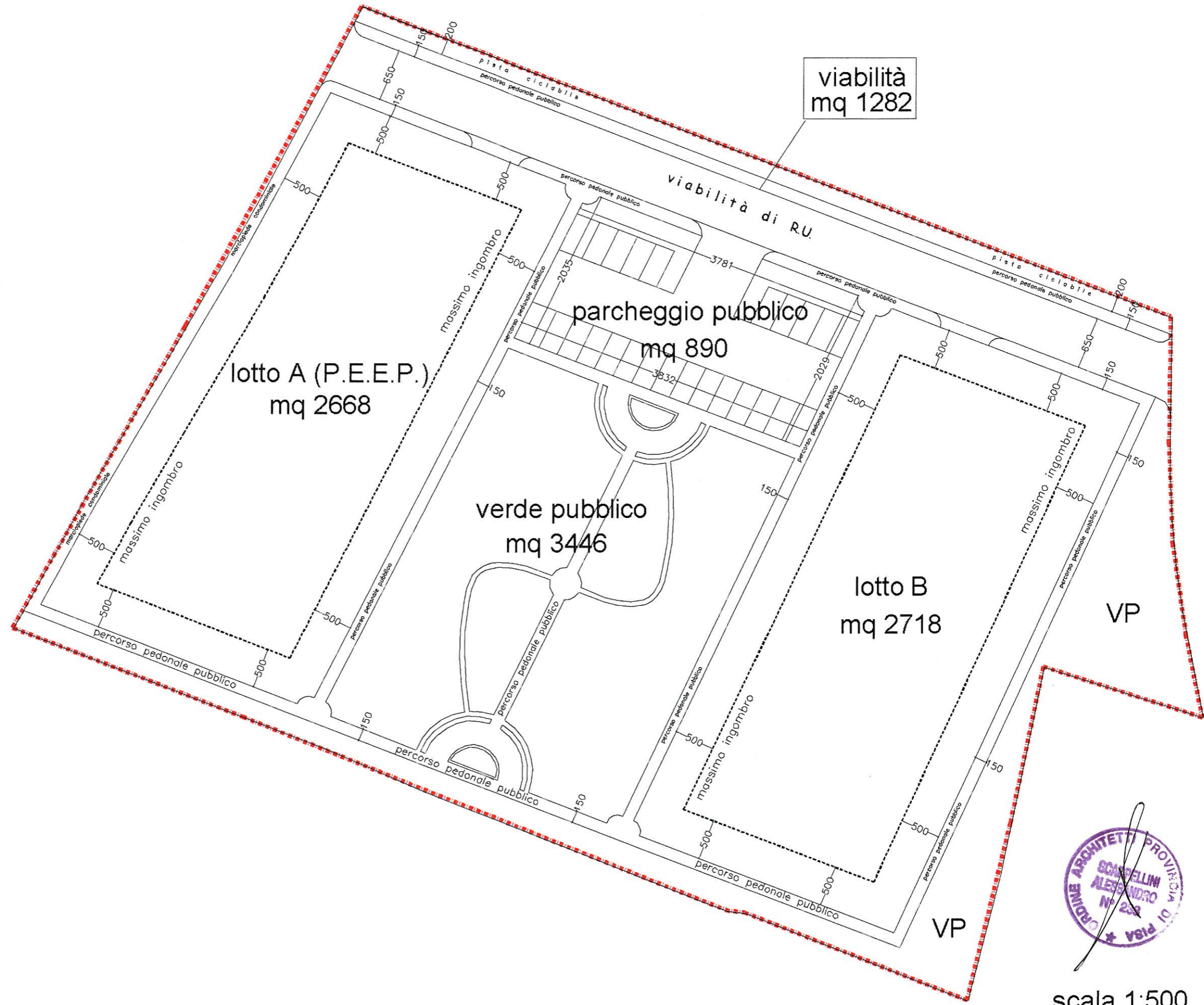


scala 1:500

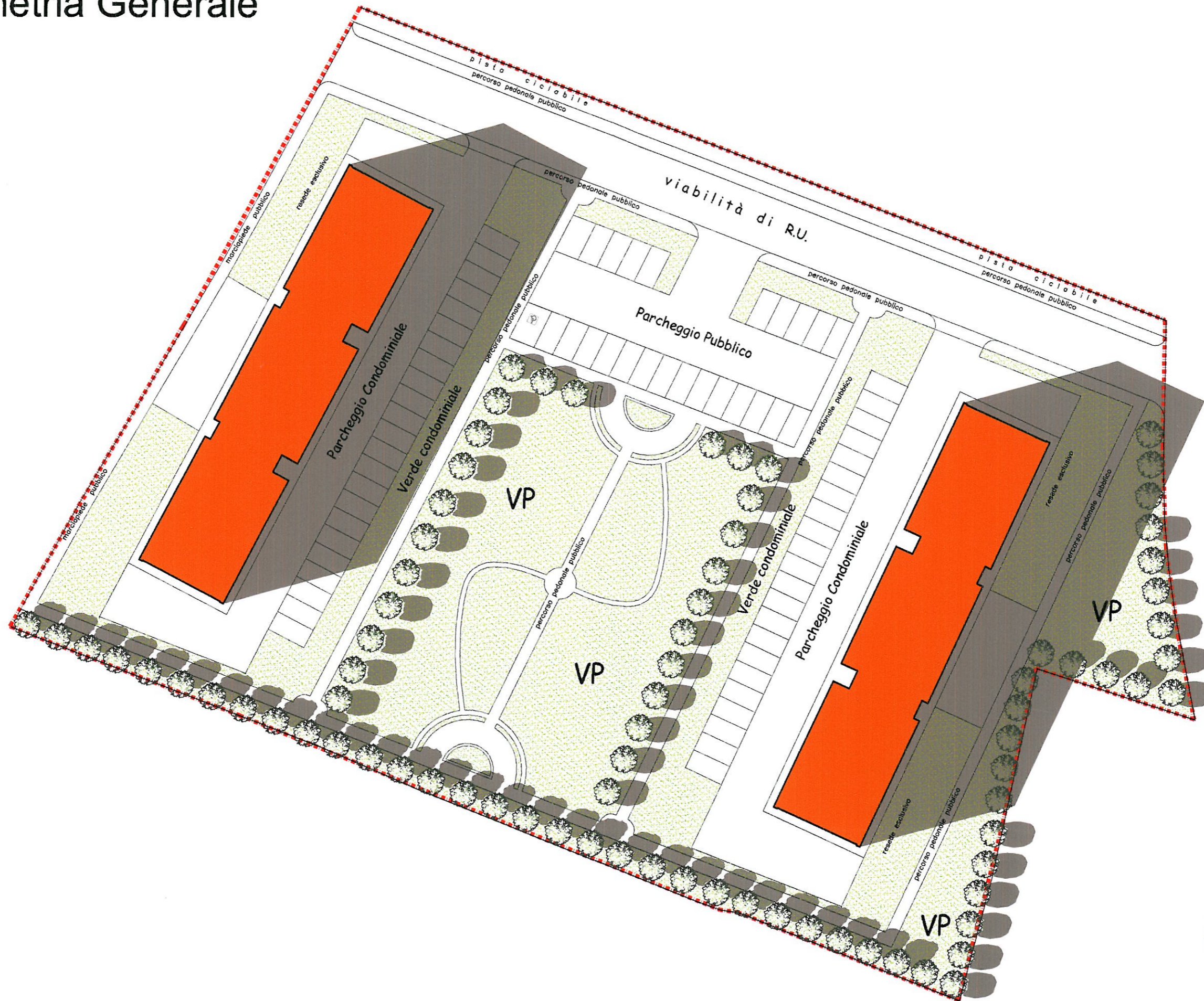
AREA DI MASSIMO INGOMBRO

ALLINEAMENTI

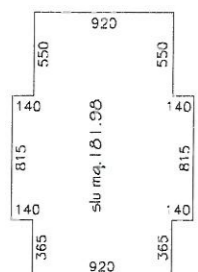
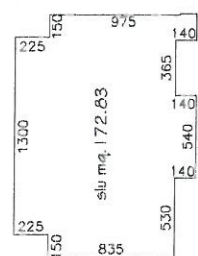
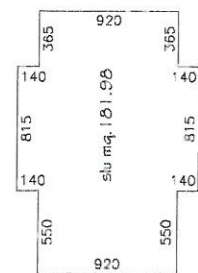
DISTANZE



scala 1:500



Calcolo S.L.U.



Totale S.L.U. piano primo: 536.79mq

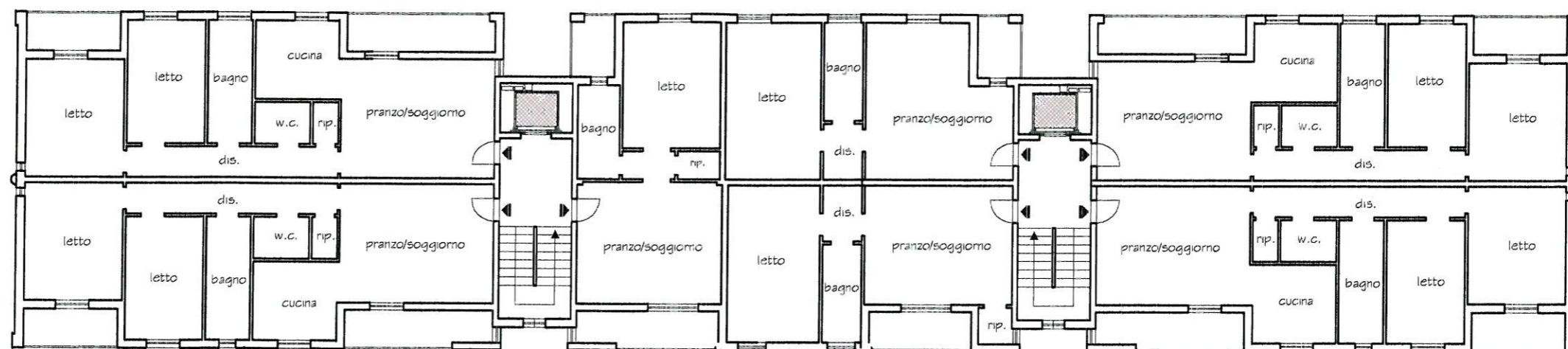
1:500

slu mq. 536.79

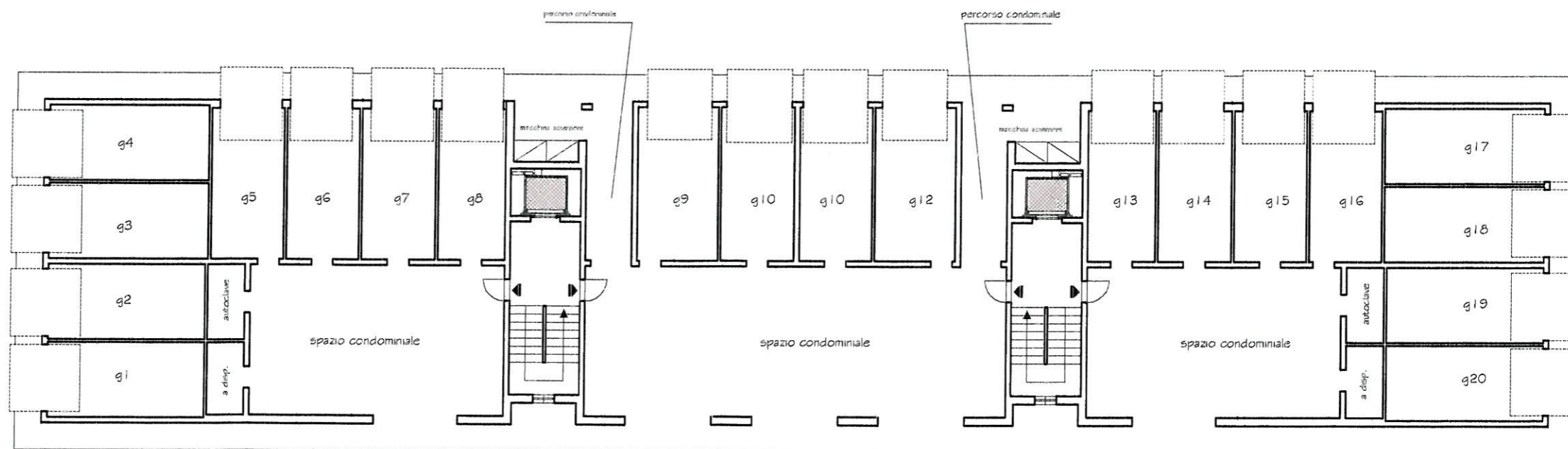
slu mq. 181.98

slu mq. 172.83

slu mq. 181.98



PIANO PRIMO



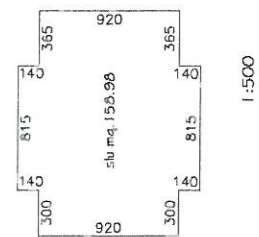
Lotto A



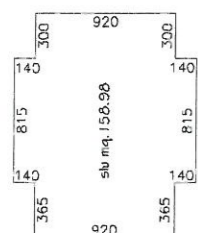
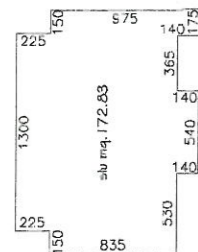
PIANO TERRA

scala 1:200

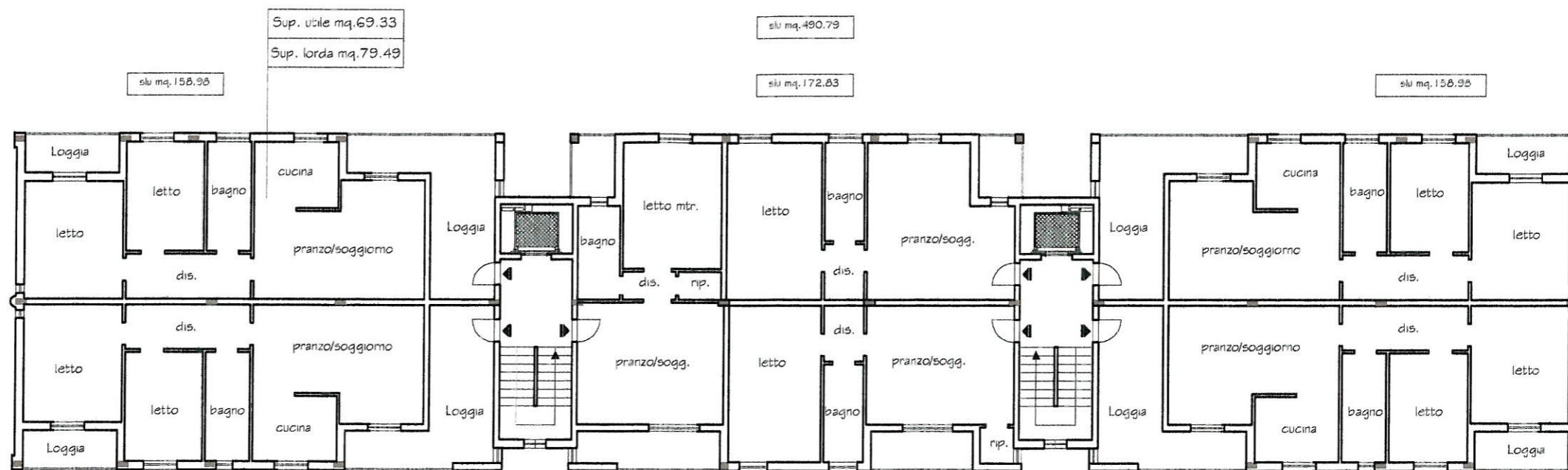
Calcolo S.L.U.



1:500

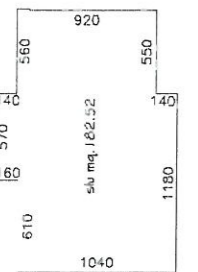
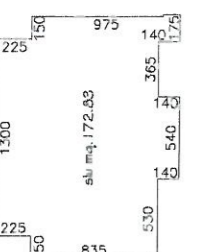
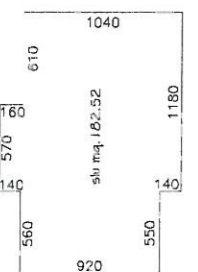


Totale S.L.U. piano terzo: 490.79mq

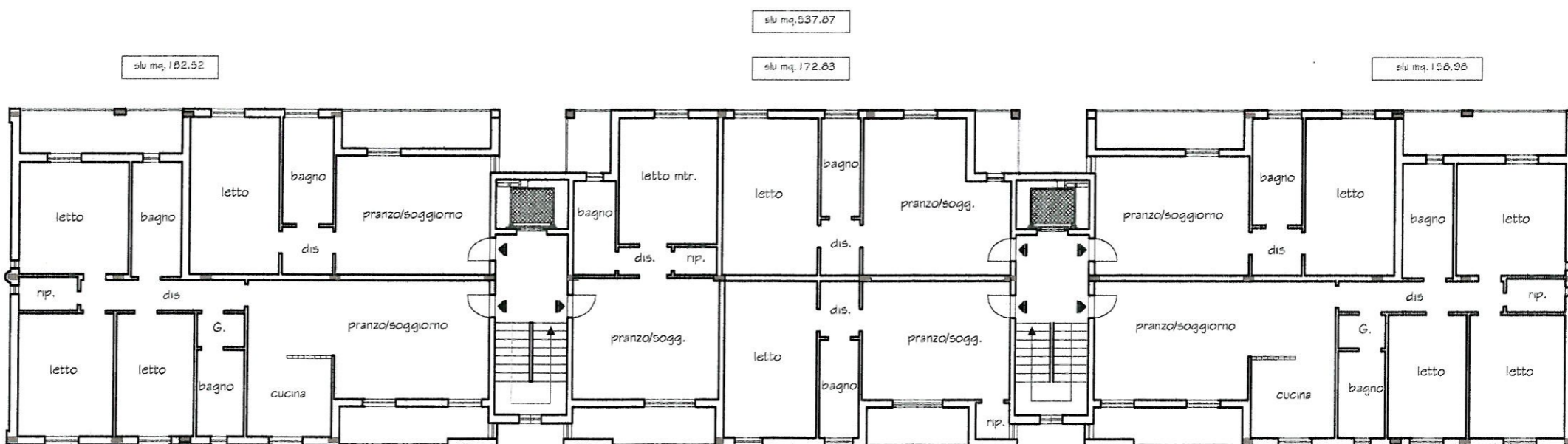


PIANO TERZO

Calcolo S.L.U.



Totale S.L.U. piano secondo: 537.87mq



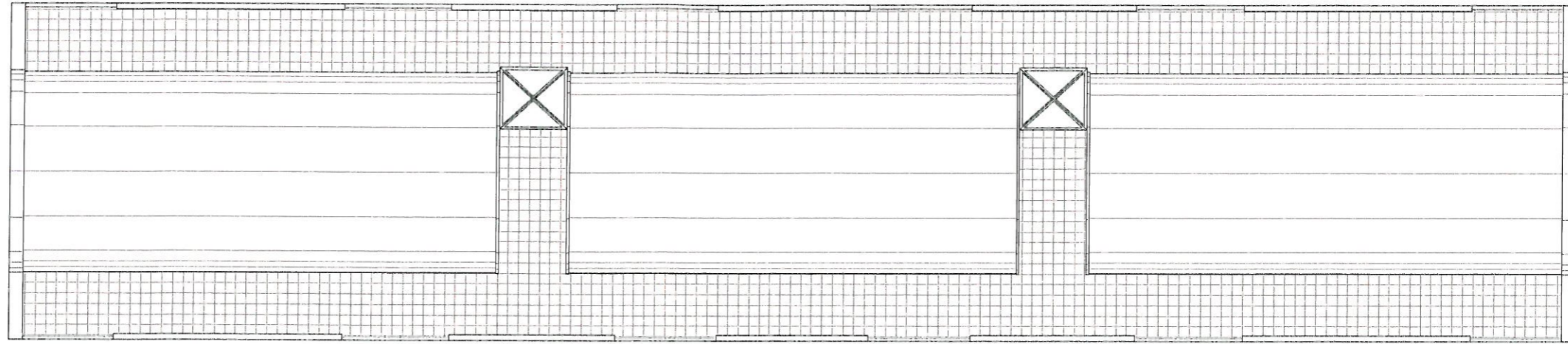
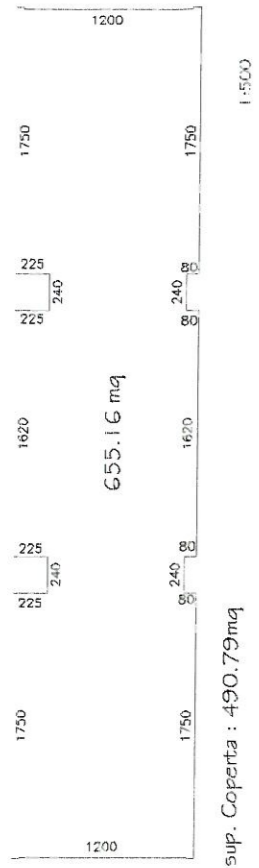
PIANO SECONDO



scala 1:200

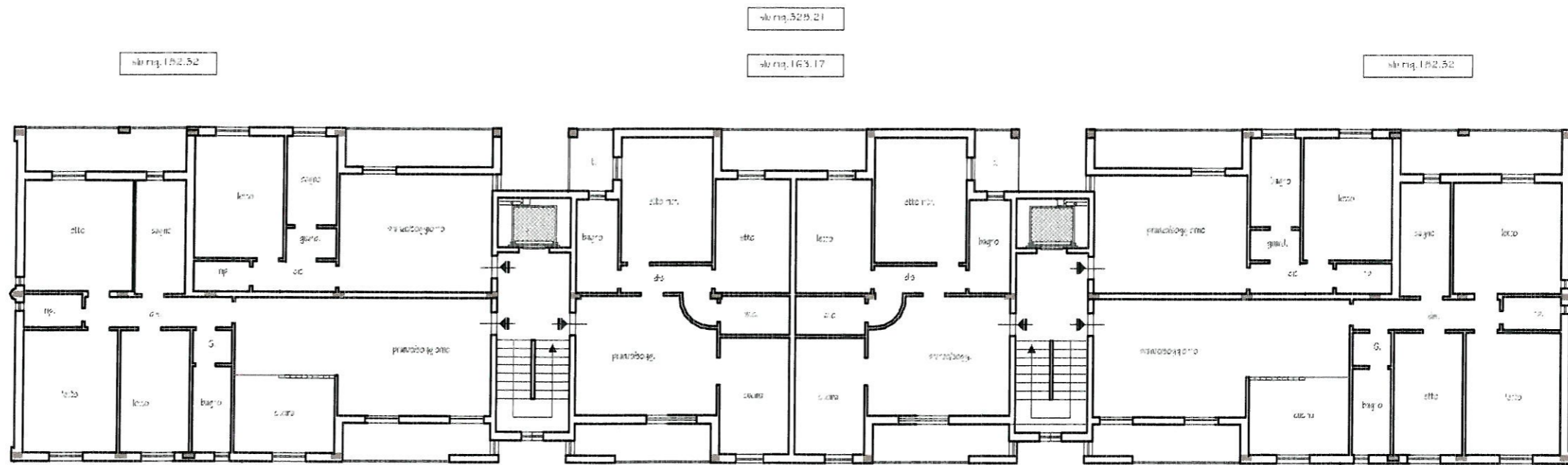
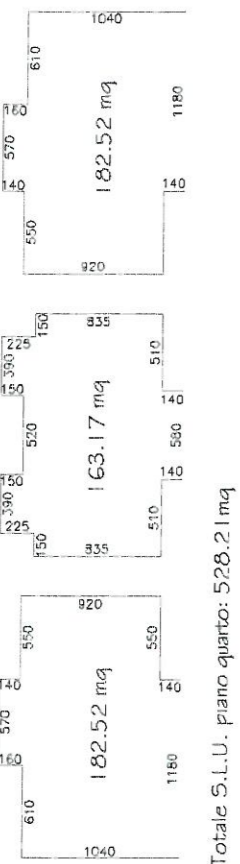
Lotto A

Calcolo Sup. Coperta



COPERTURA

Calcolo S.L.U.



PIANO QUARTO

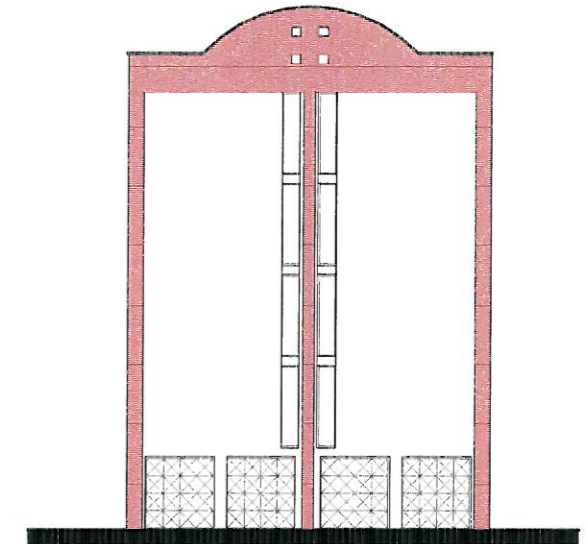
Lotto A



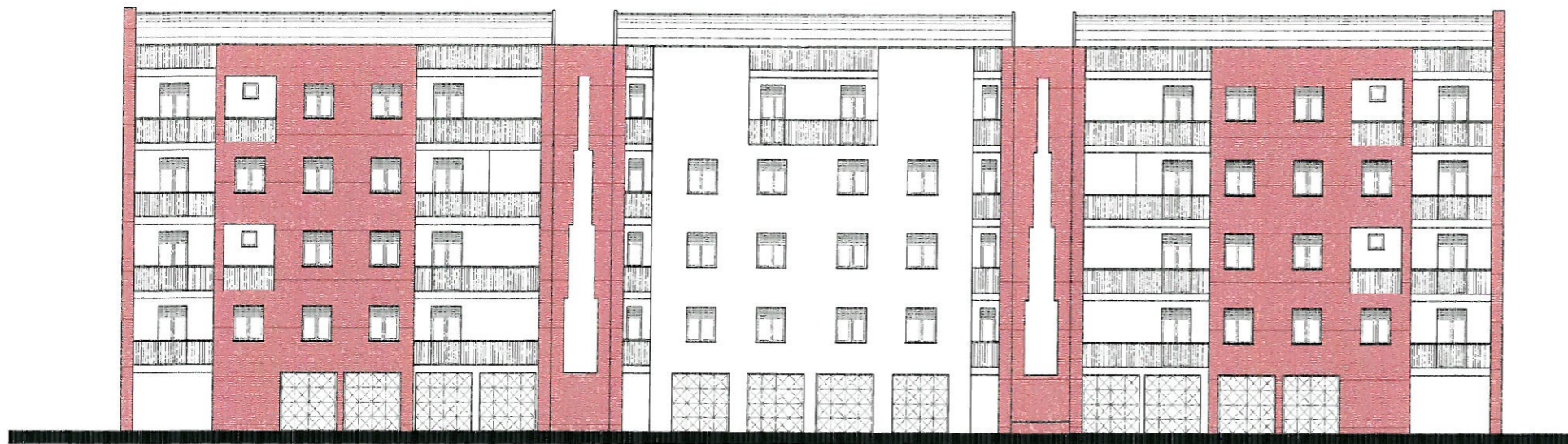
scala 1:200



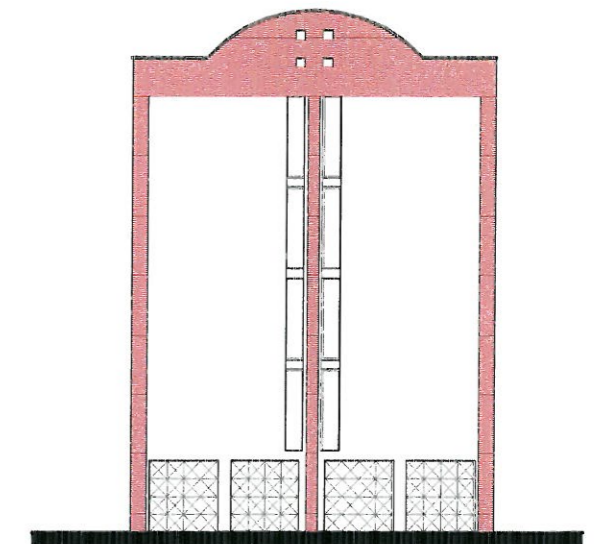
Profilo Ovest ingresso su Via Puglia



Profilo Nord



Profilo Est



Profilo Sud

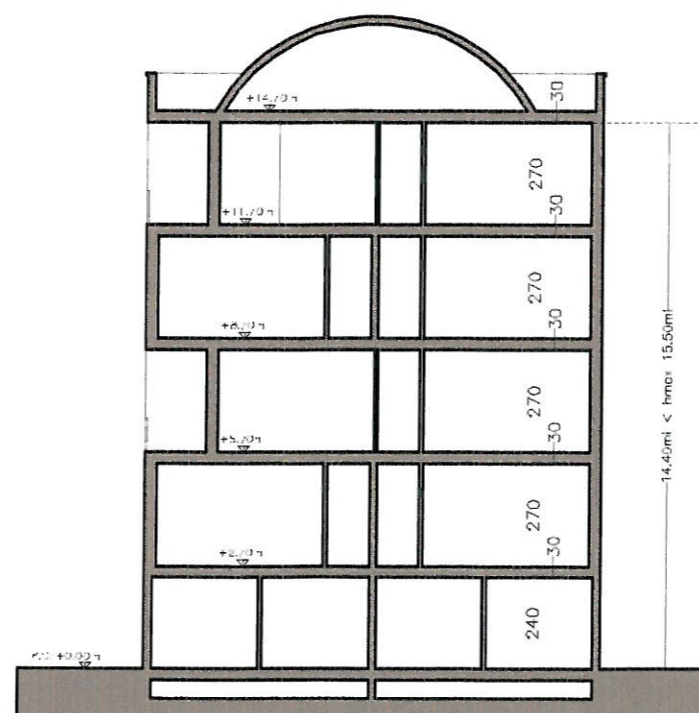
Lotto A



1:250



Sezione Longitudinale



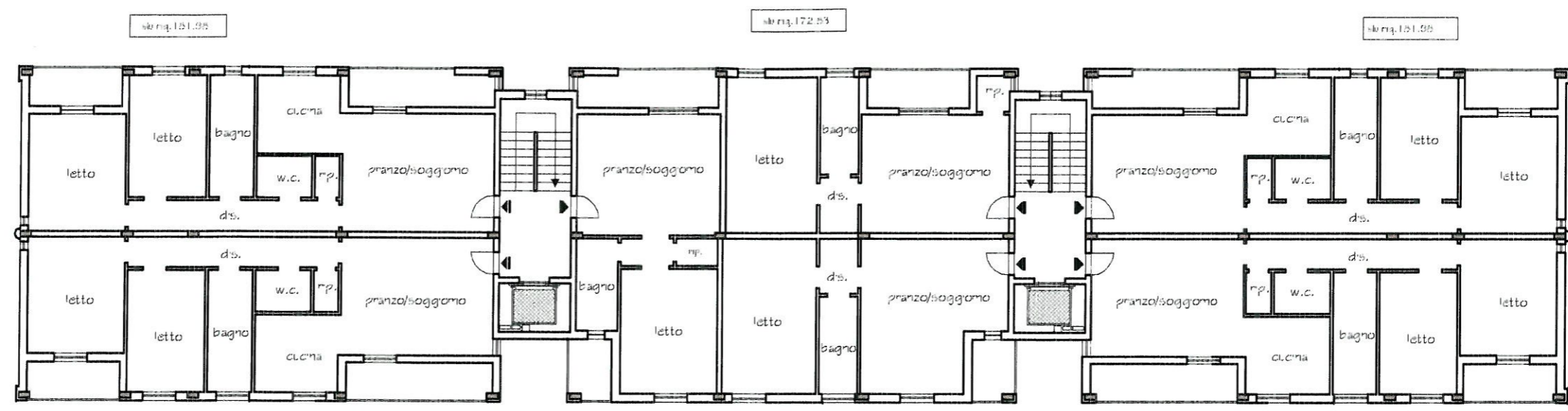
Sezione Trasversale

Lotto A

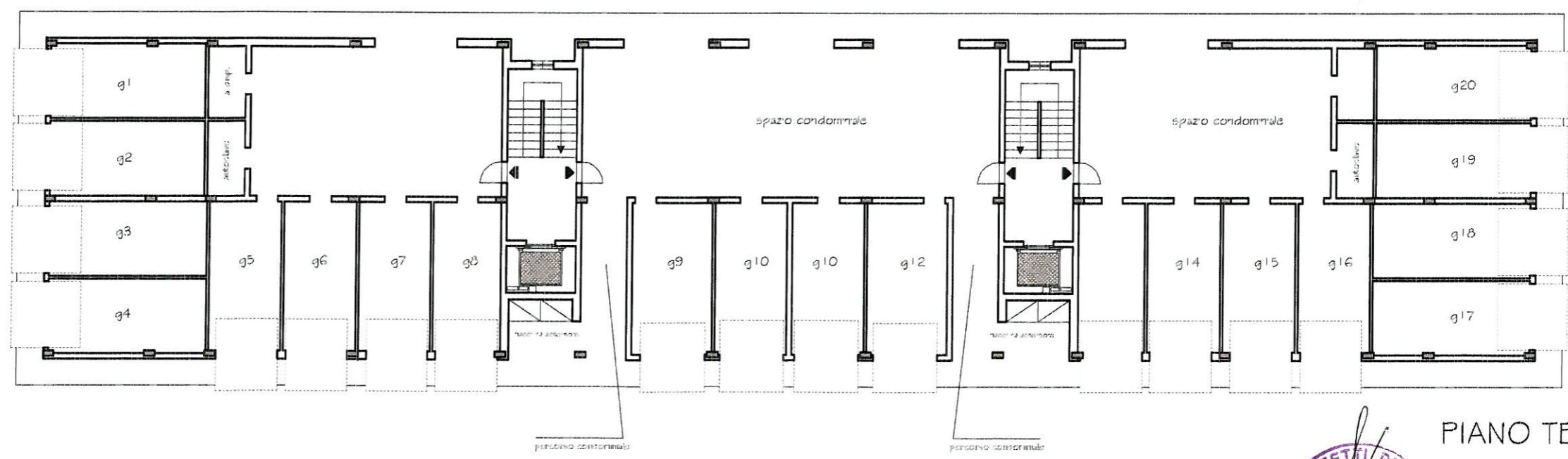


1:200

slu mq.536.79

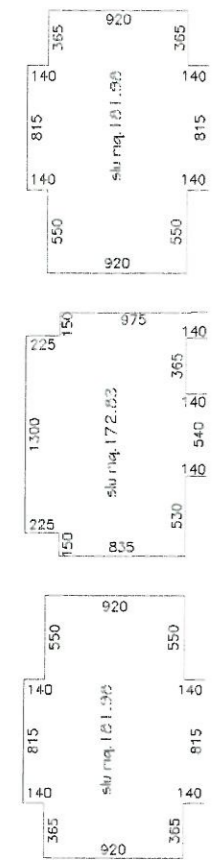


PIANO PRIMO



PIANO TERRA

Calcolo S.L.U.



Totale S.L.U. piano primo: 536.79mq

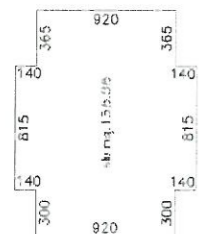
1:500

Lotto B

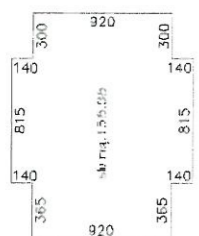
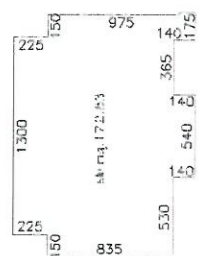


scala 1:200

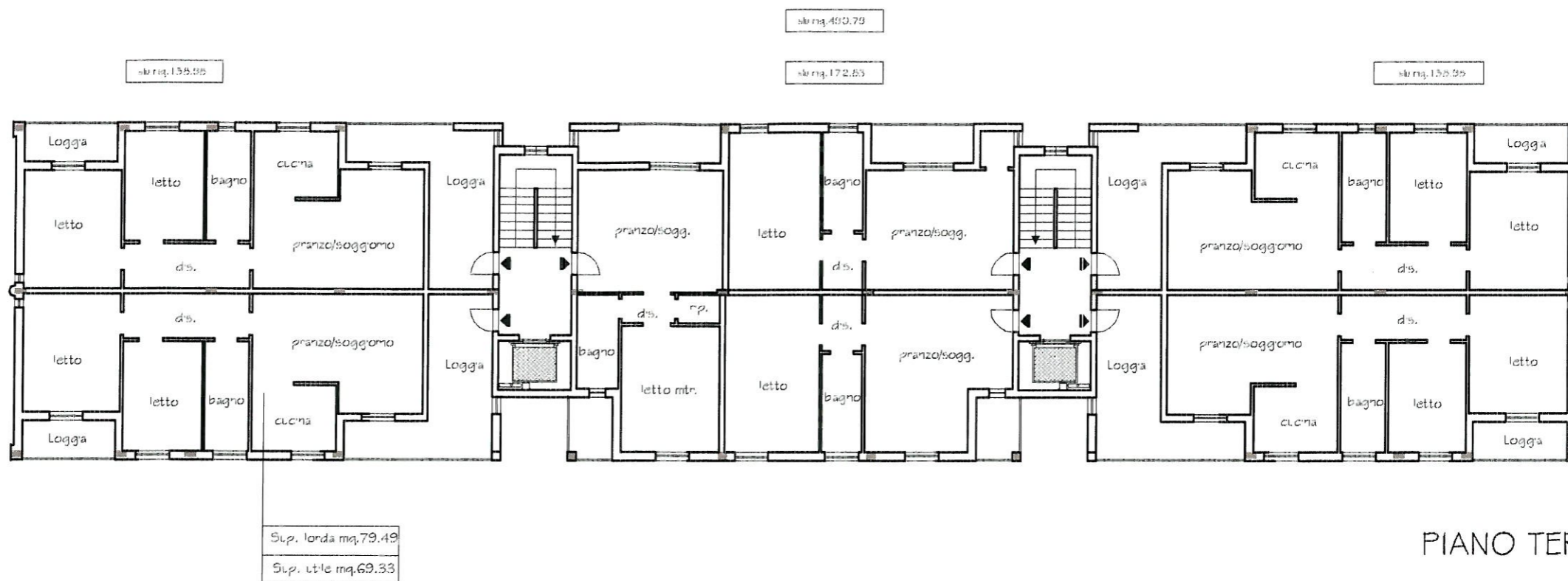
Calcolo S.L.U.



1:500

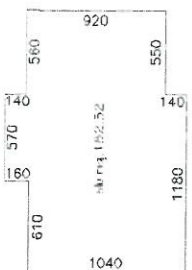
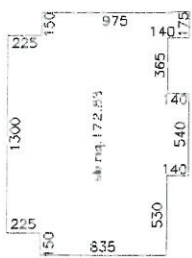
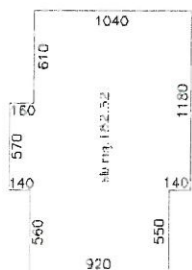


Totale S.L.U. piano terzo: 490.79mq

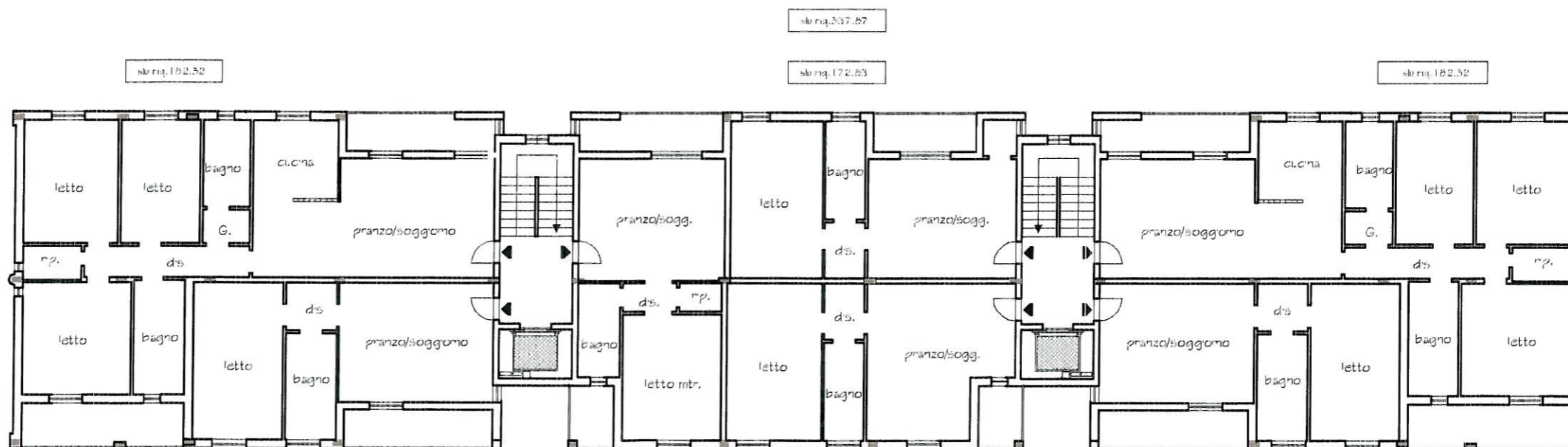


PIANO TERZO

Calcolo S.L.U.



Totale S.L.U. piano secondo: 537.87mq



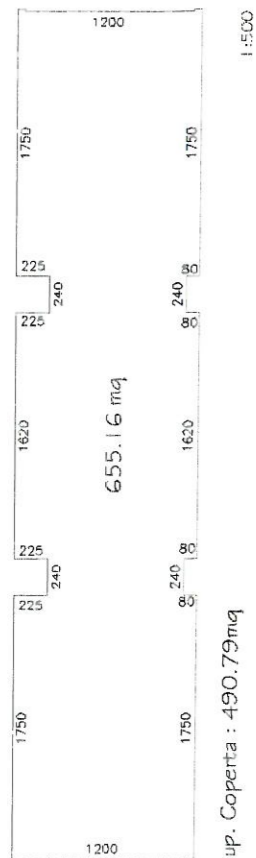
PIANO SECONDO

Lotto B

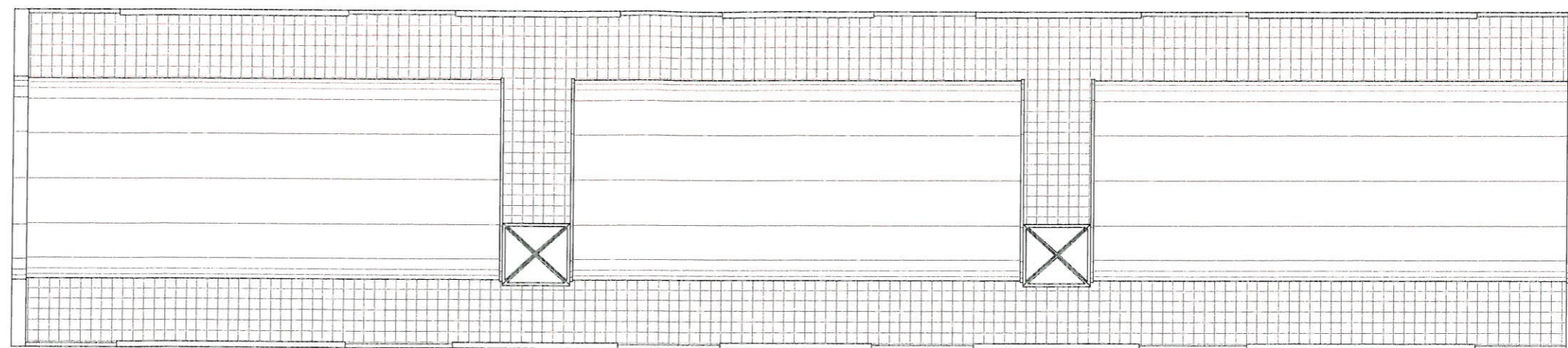


scala 1:200

Calcolo Sup. Coperta

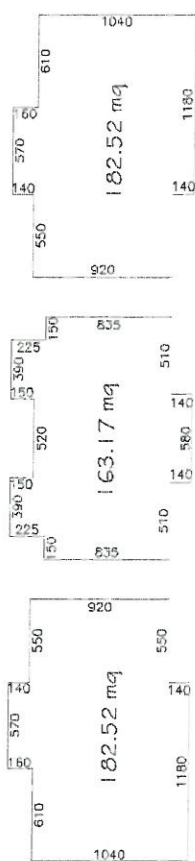


sup. Coperta : 490.79mq

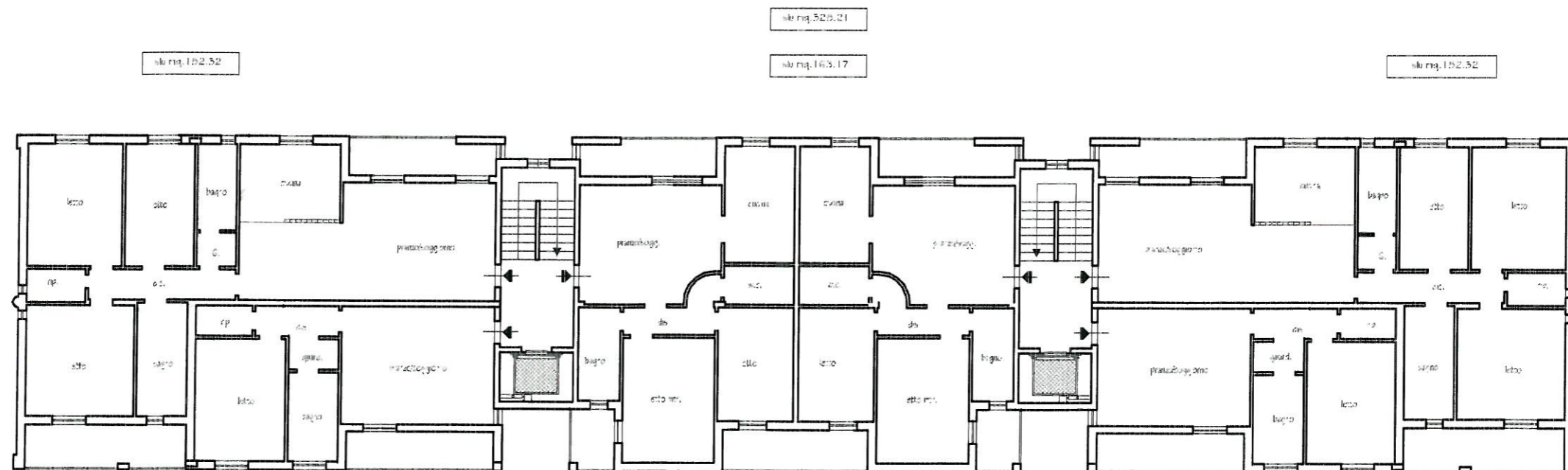


COPERTURA

Calcolo S.L.U.



Totale S.L.U. piano quarto: 528.21 mq



PIANO QUARTO

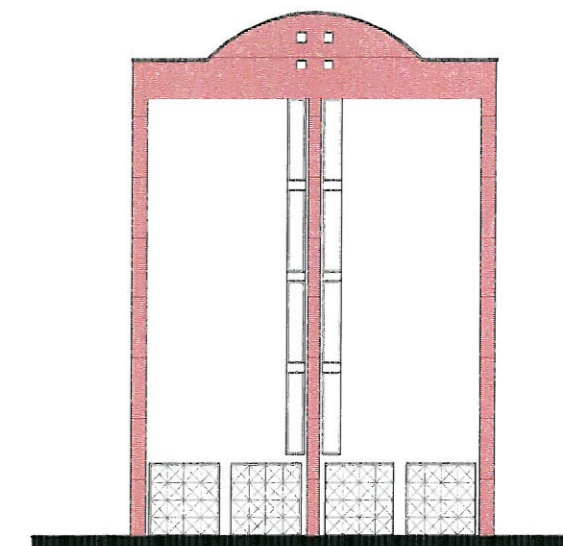


Lotto B

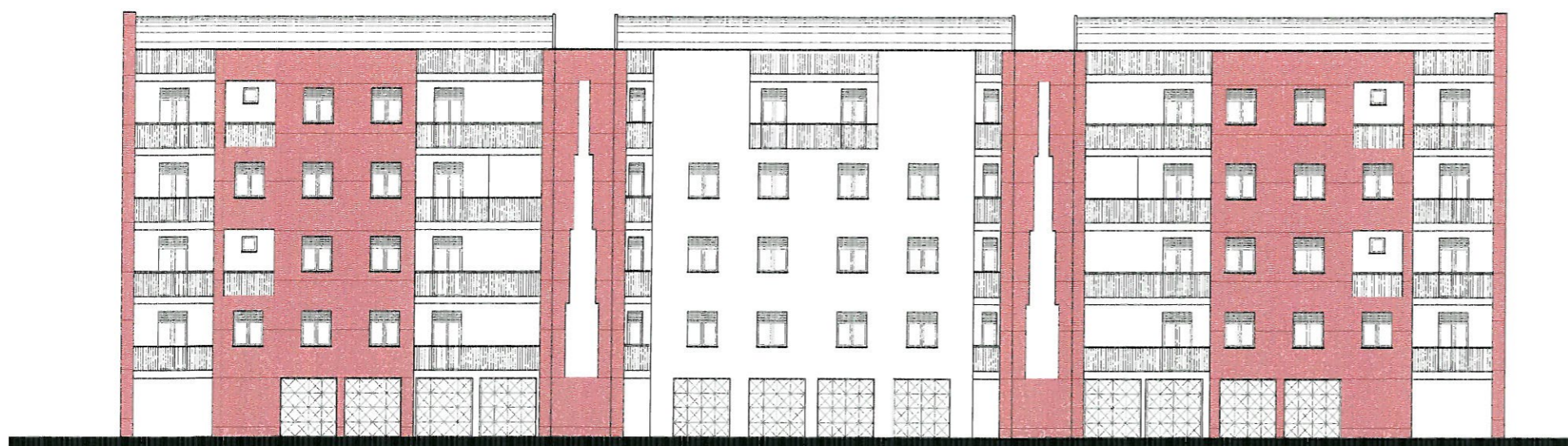
scala 1:200



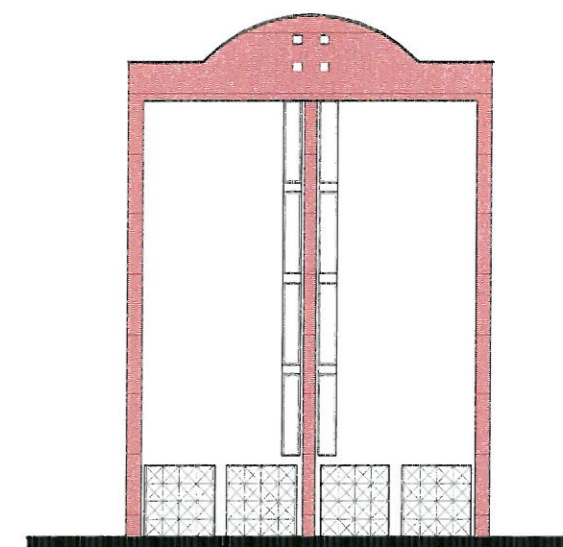
Profilo Est ingresso su via delle Tomi



Profilo Nord



Profilo Ovest

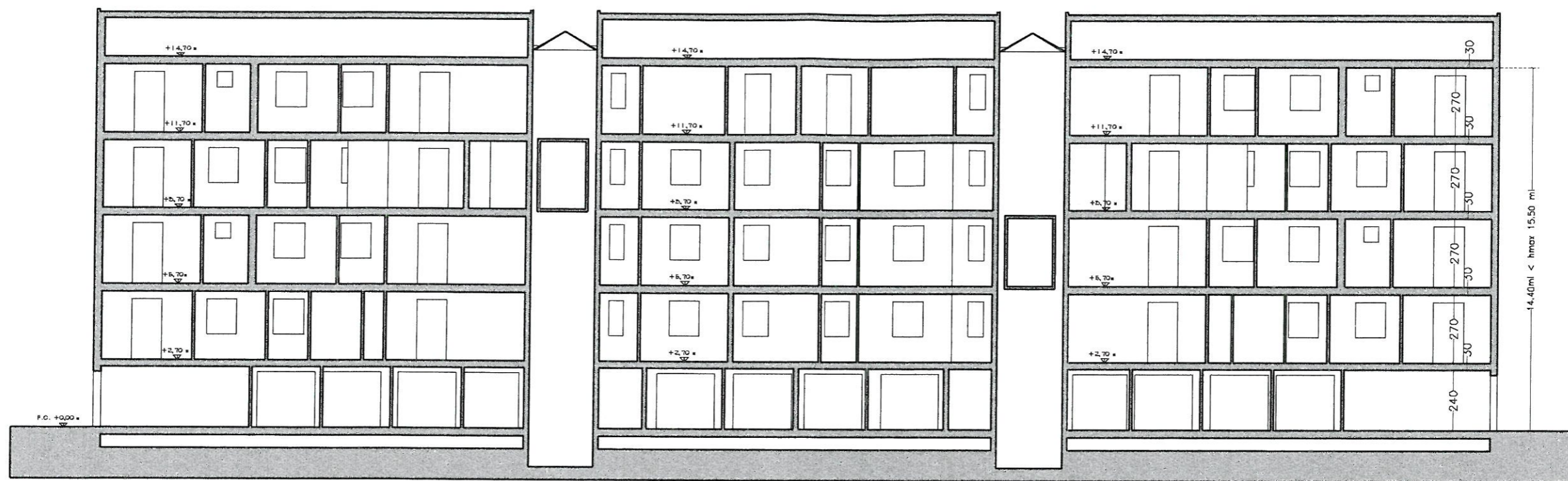


Profilo Sud

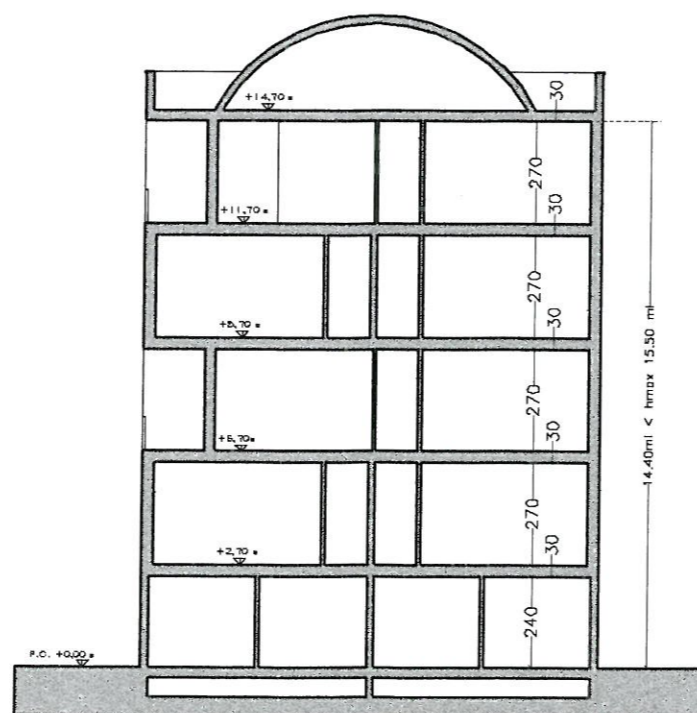
Lotto B



1:250



Sezione Longitudinale



Sezione Trasversale

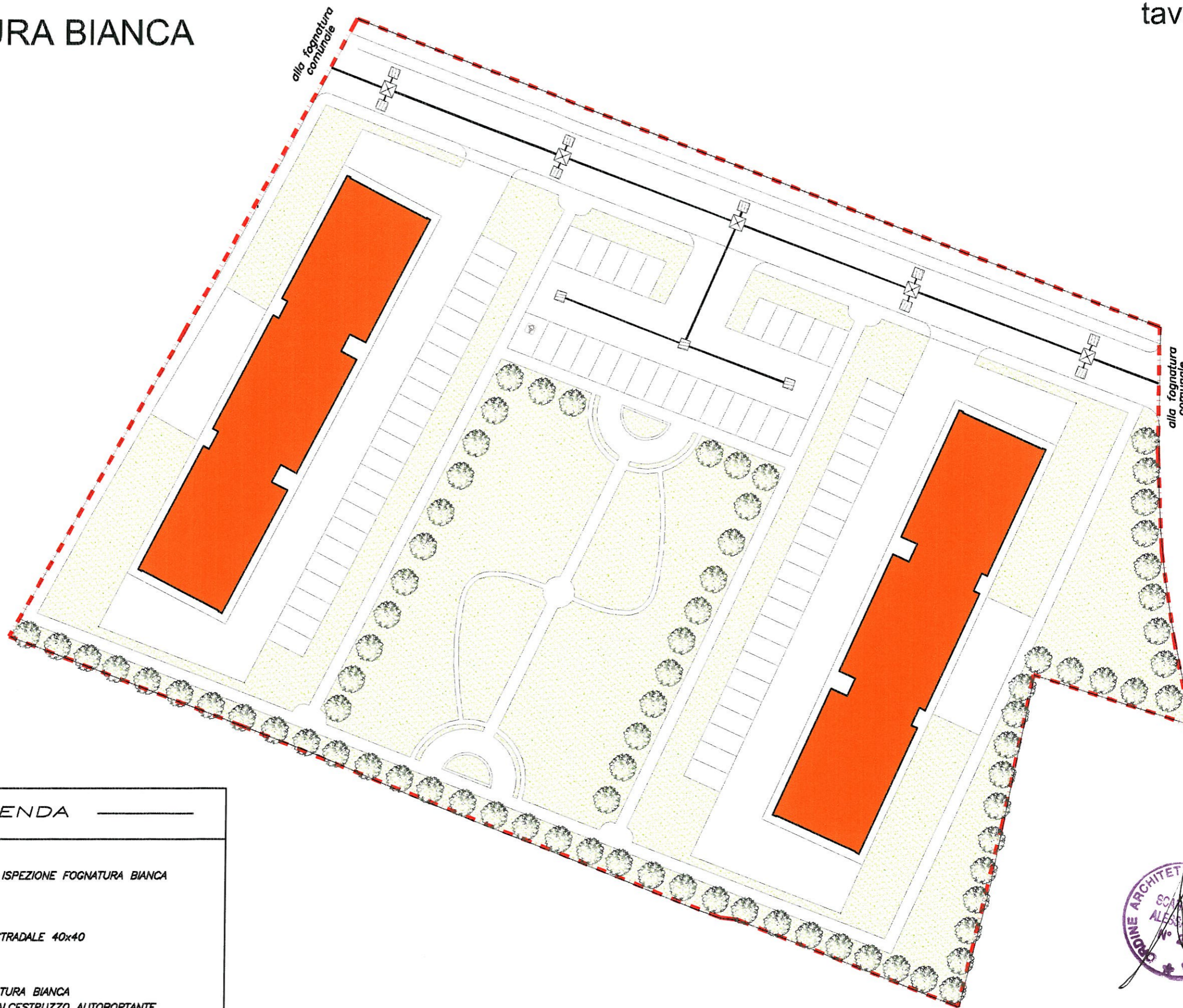


Lotto A

1:200

FOGNATURA BIANCA

tavola 19



alla fognatura comunale

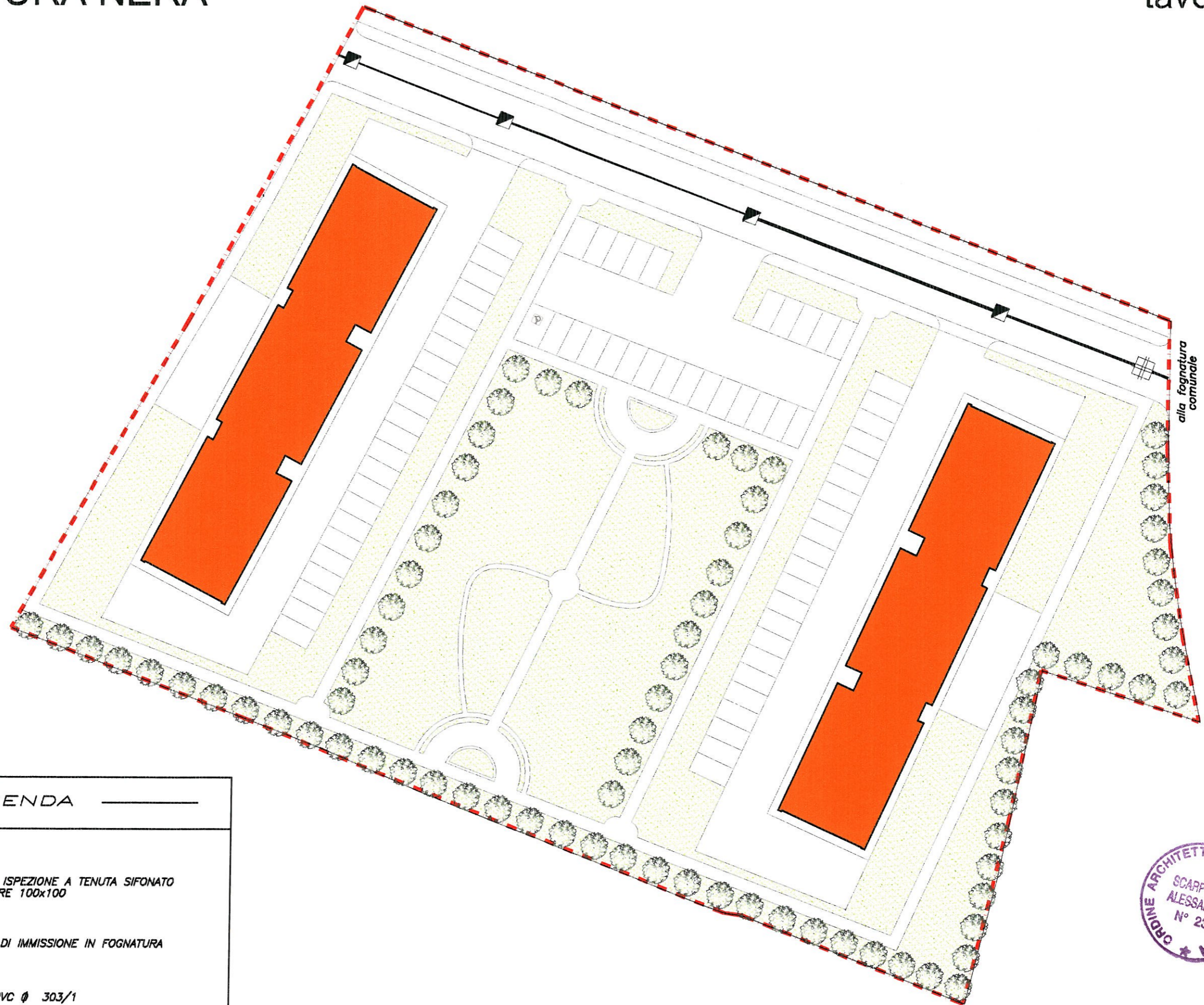
alla fognatura comunale

LEGENDA	
	POZZETTO ISPEZIONE FOGNATURA BIANCA 100x100
	CADITOIA STRADALE 40x40
	RETE FOGNATURA BIANCA D.500 IN CALCESTRUZZO AUTOPORTANTE

Perimetro del PP



scala 1:500



LEGENDA

-  POZZETTO ISPEZIONE A TENUTA SIFONATO ACQUE NERE 100x100
-  POZZETTO DI IMMISSIONE IN FOGNATURA
-  TUBO IN PVC Ø 303/1



Perimetro del PP

scala 1:500



LEGENDA	
	POZZETTO ISP. ACQUEDOTTO
	IDRANTE
	RETE ACQUEDOTTO
	VALVOLA INTERCETTAZIONE GAS
	RETE GAS

 Perimetro del PP



scala 1:500



LEGENDA

- P.I. ILLUMINAZIONE
- PALO DI ILLUMINAZIONE SINGOLA ARMATURA
- RETE ILLUMINAZIONE
- POZZETTO TELECOM
- RETE TELECOM

Perimetro del PP



scala 1:500