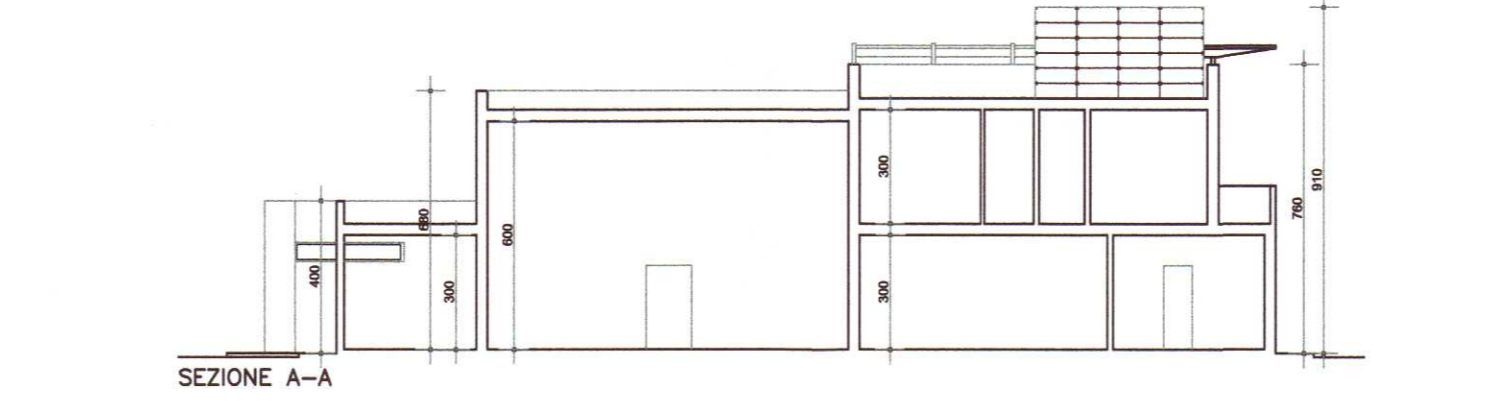
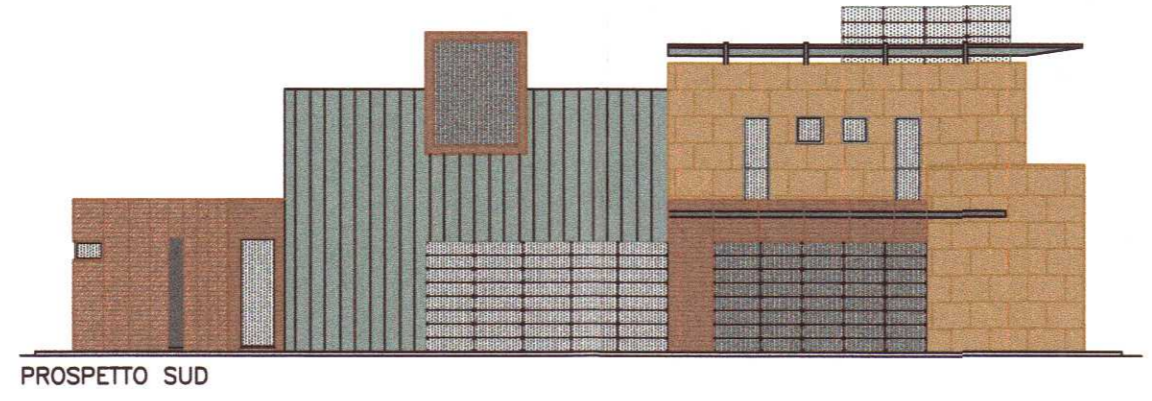
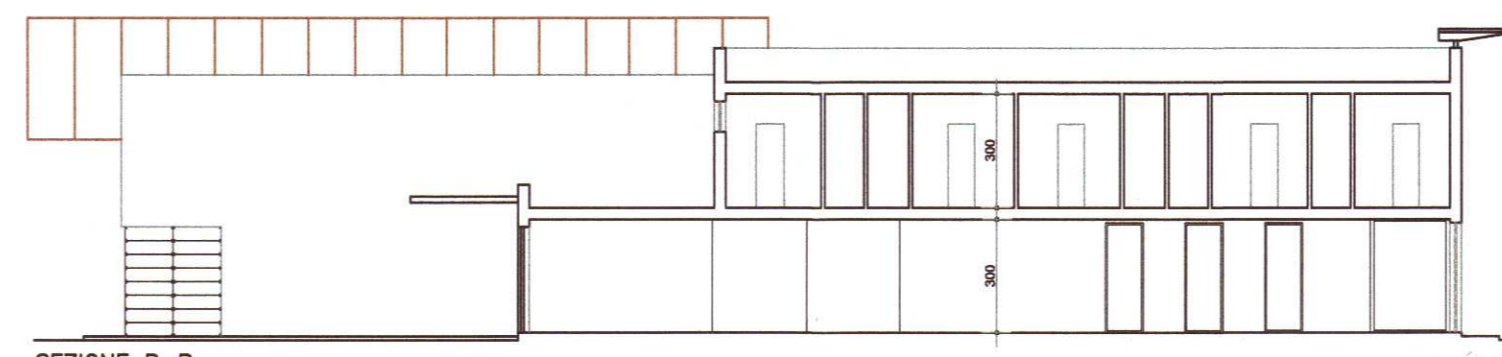
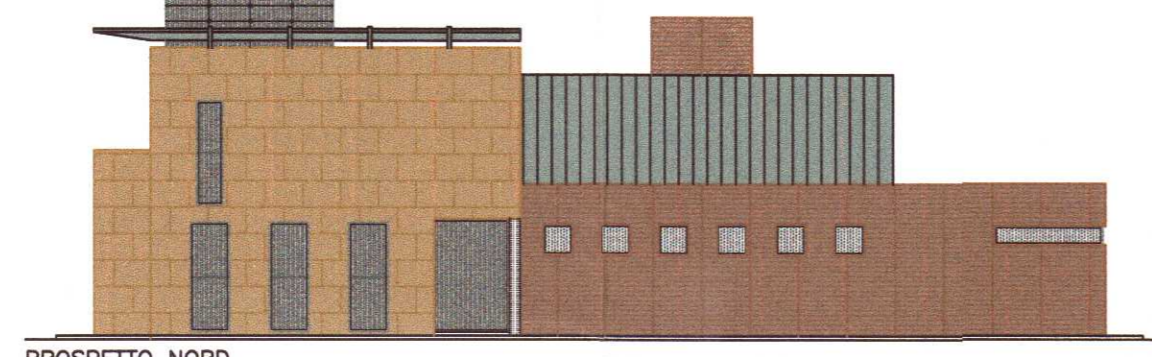
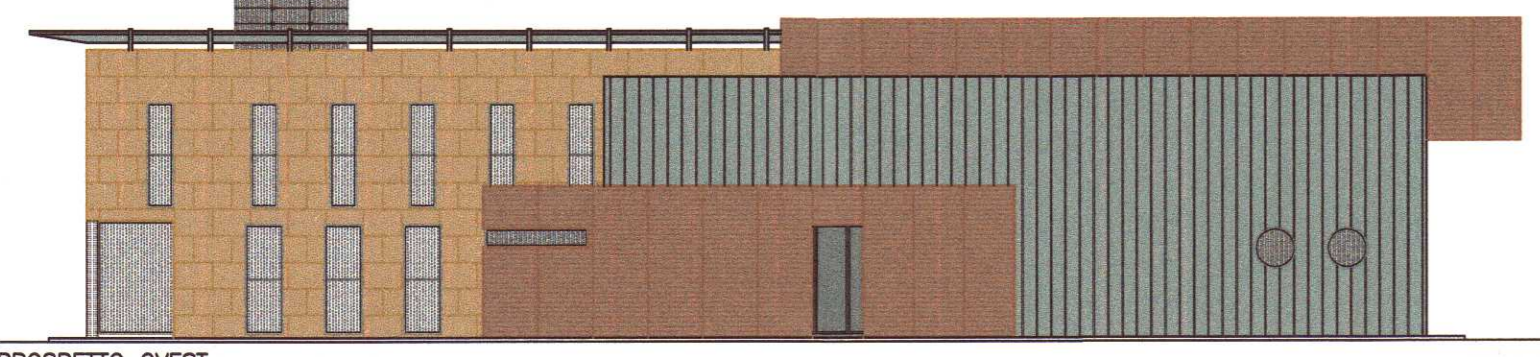
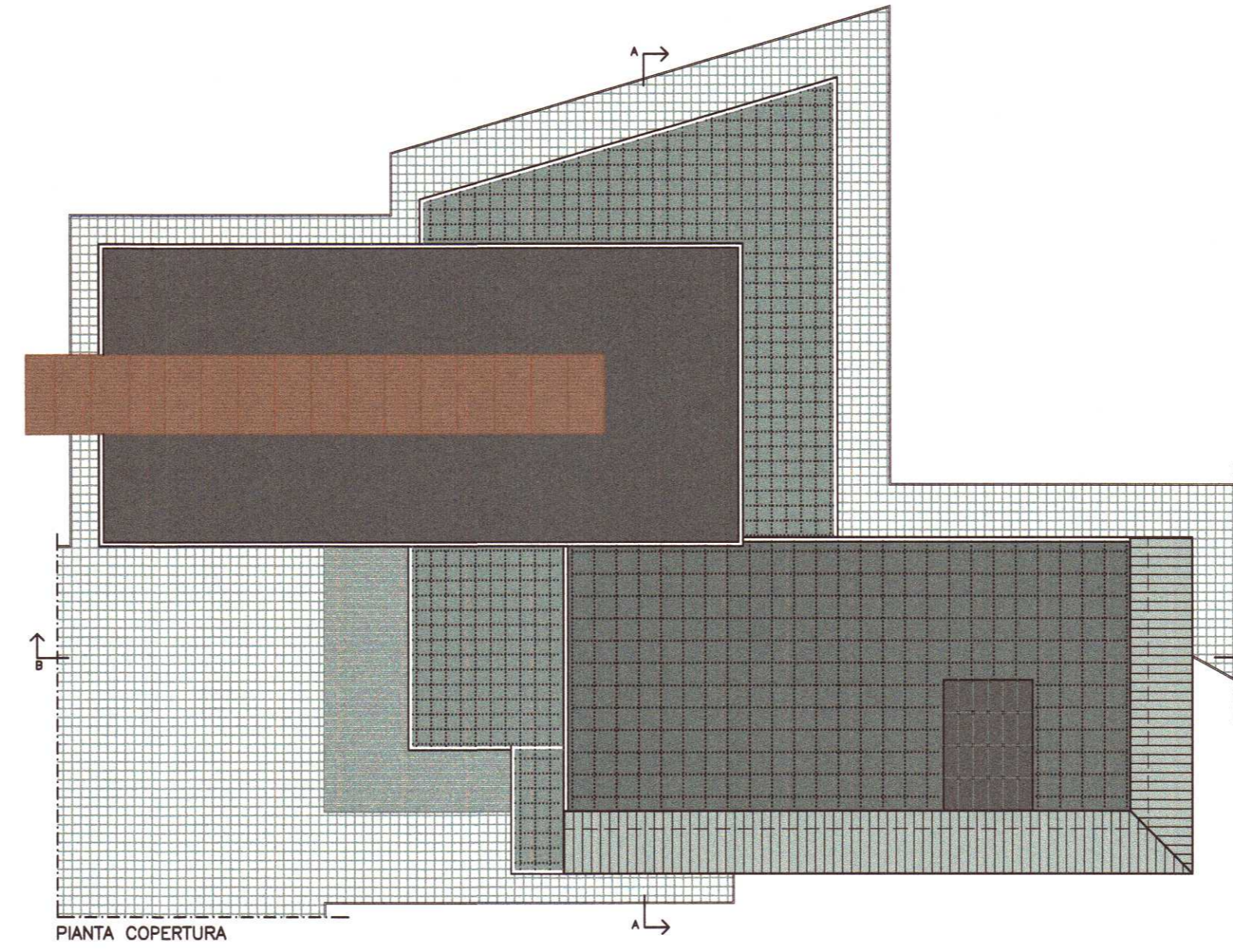
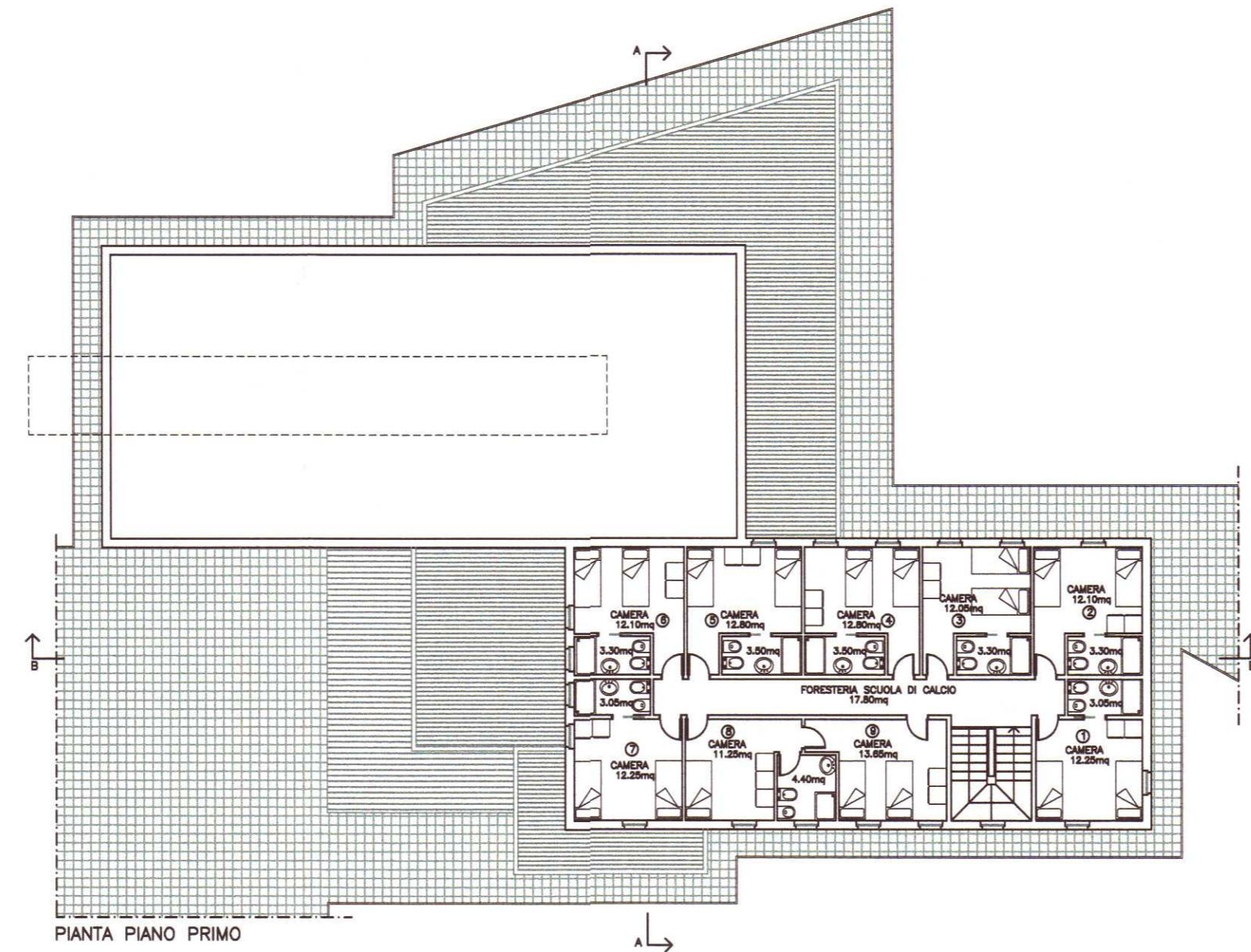
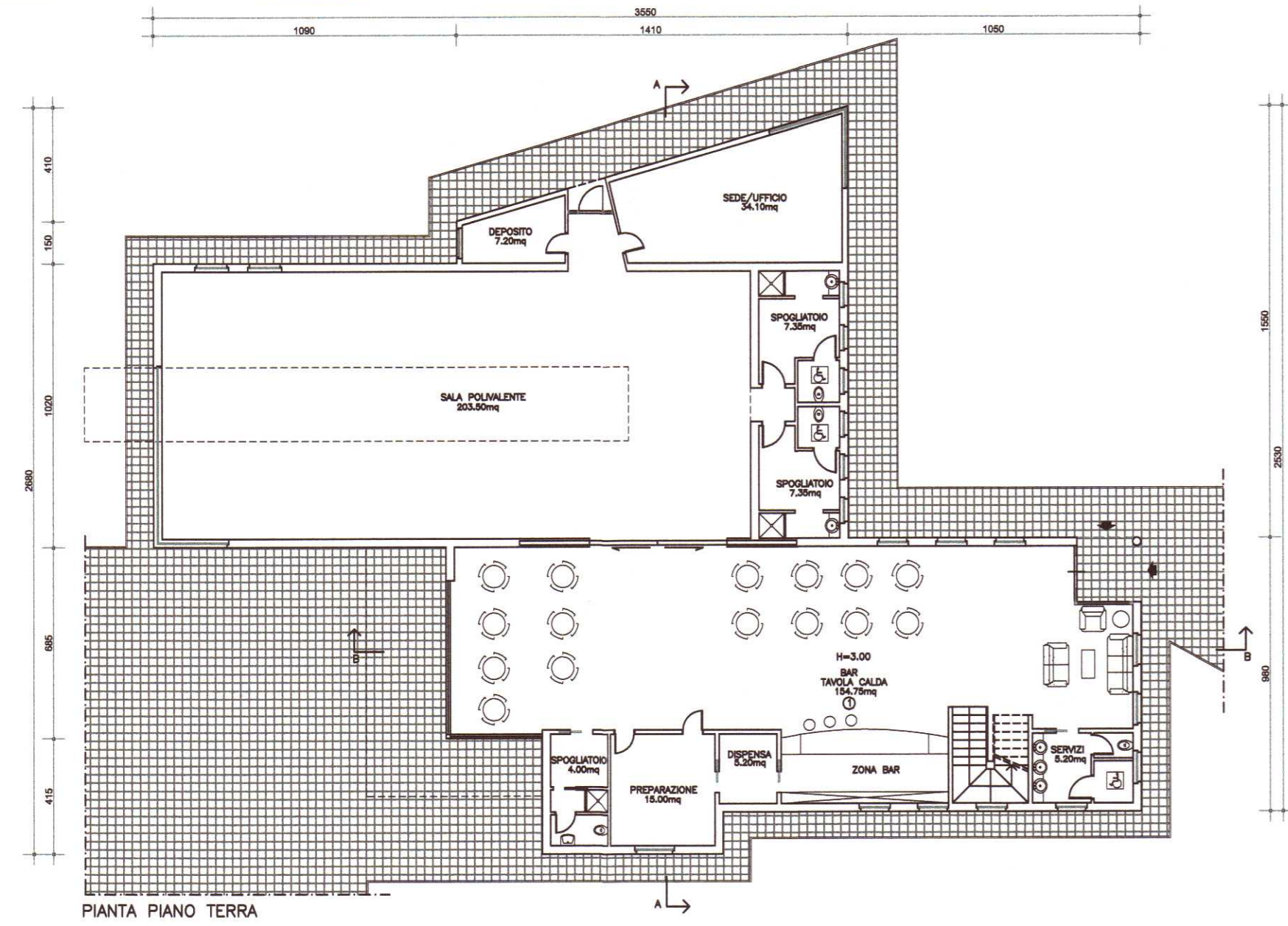
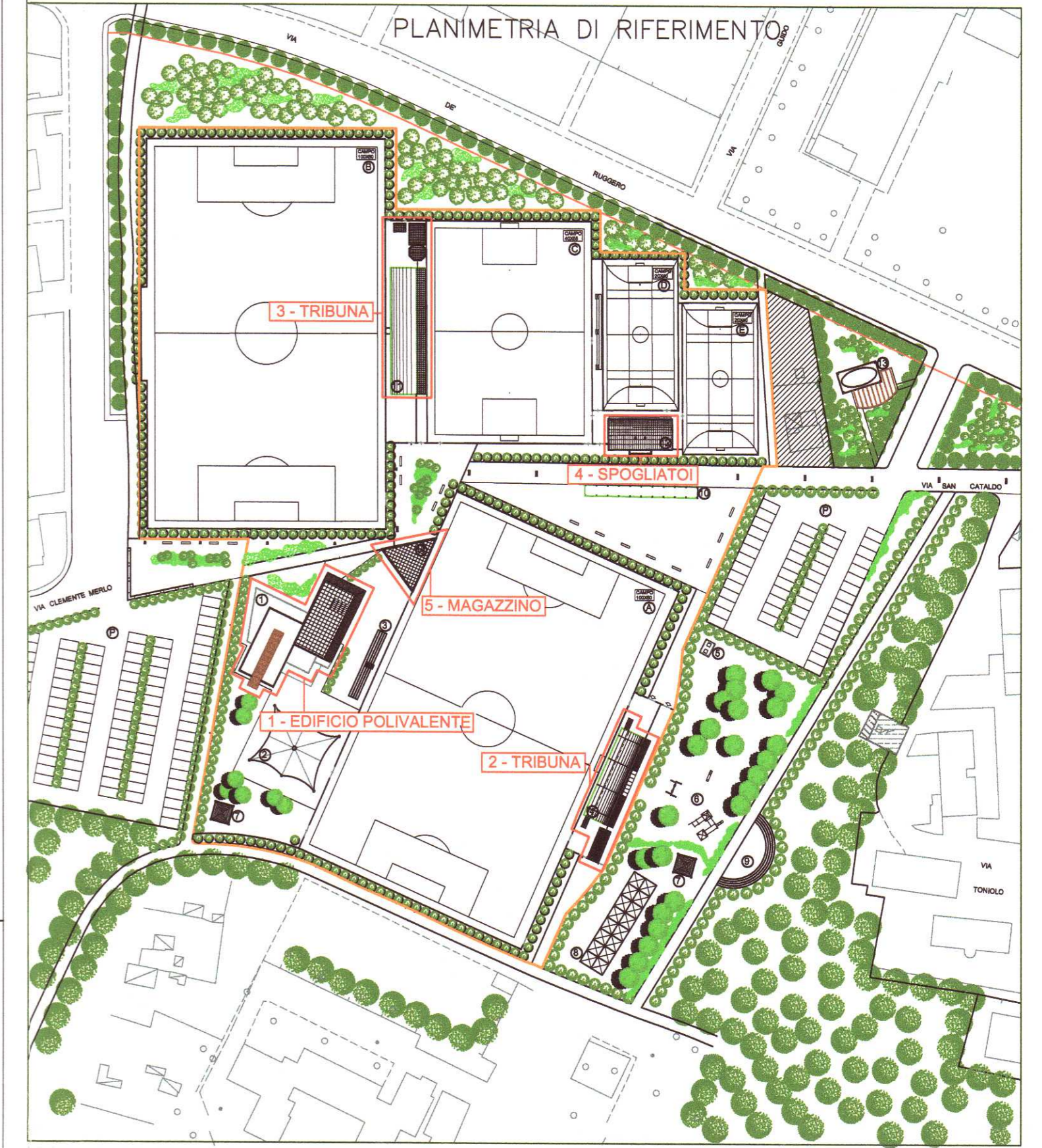


1 - EDIFICIO POLIVALENTE - FORESTERIA SCUOLA CALCIO

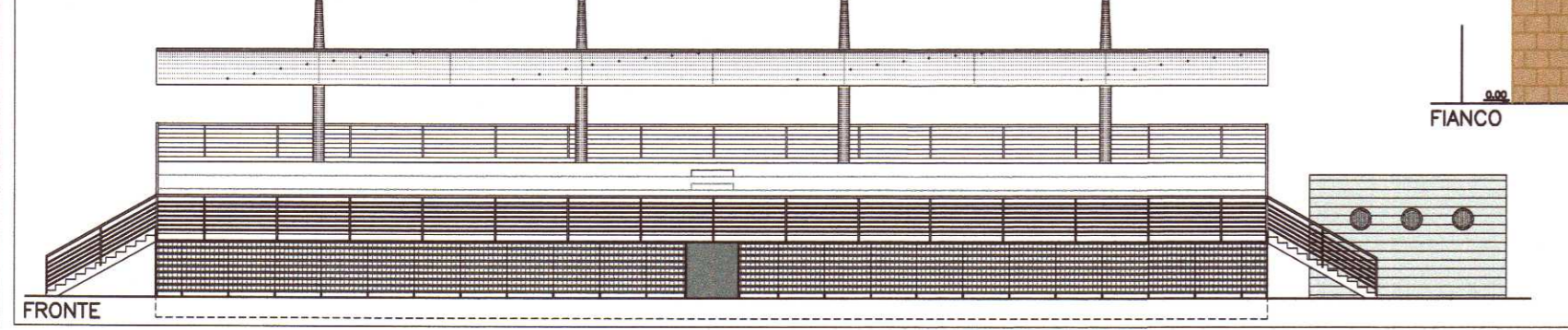
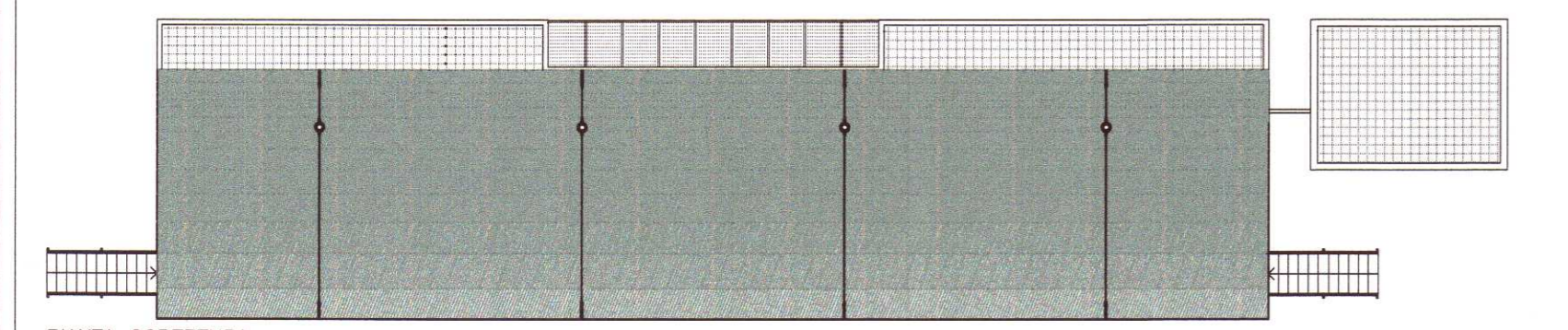
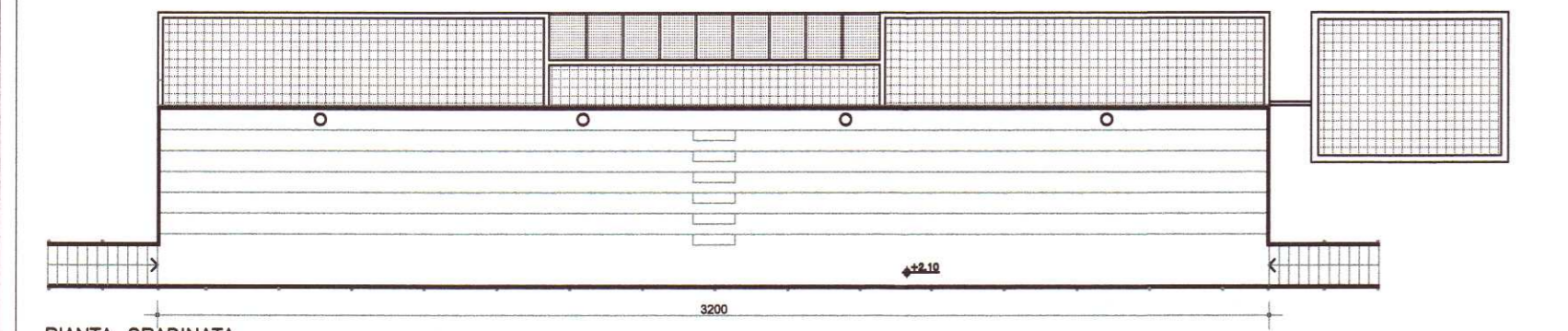
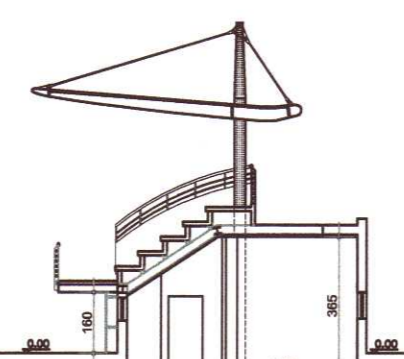
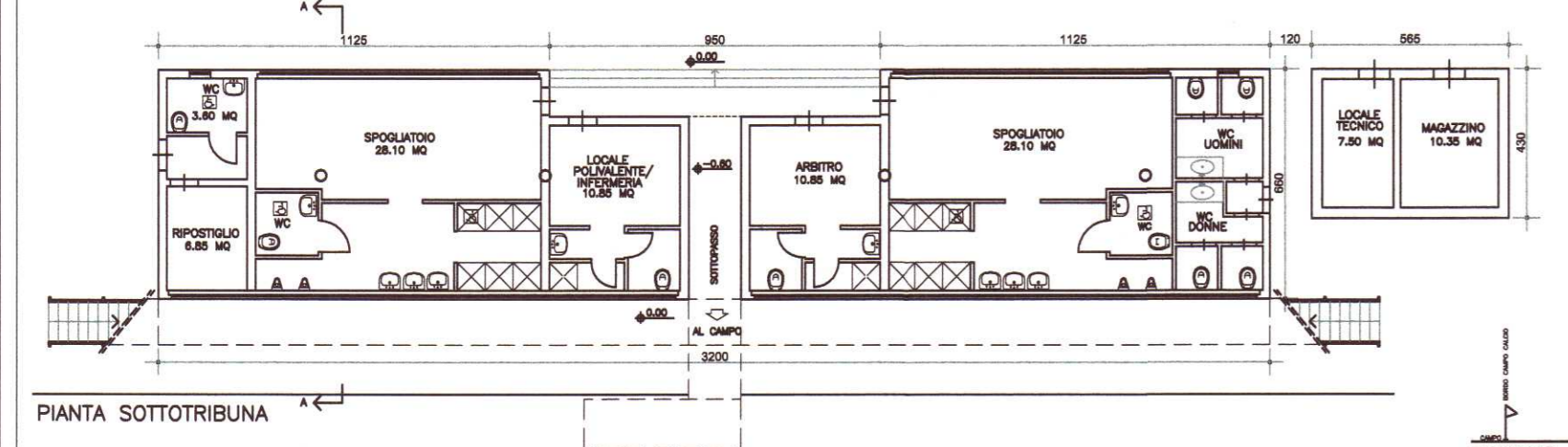


VERIFICHE URBANISTICHE

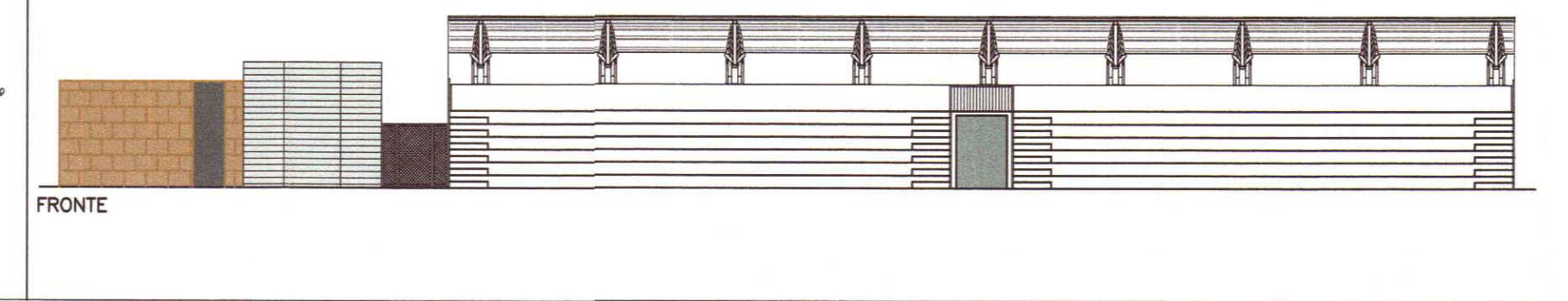
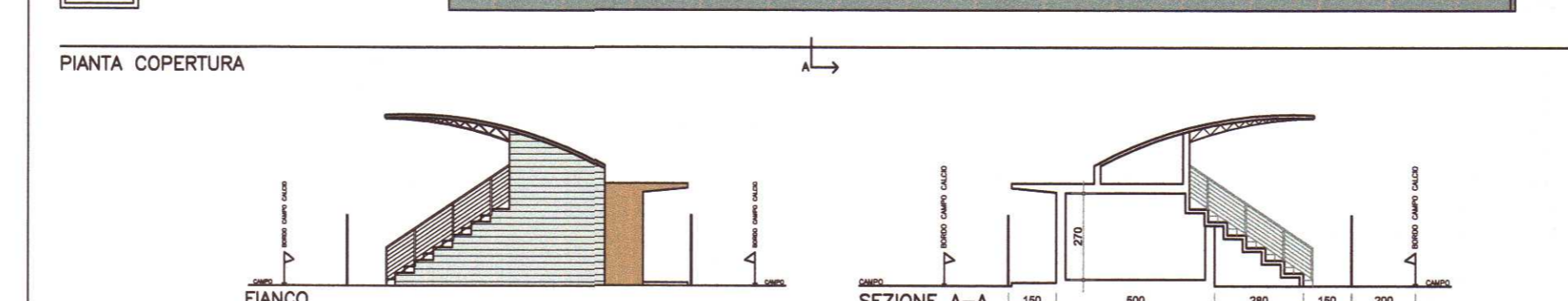
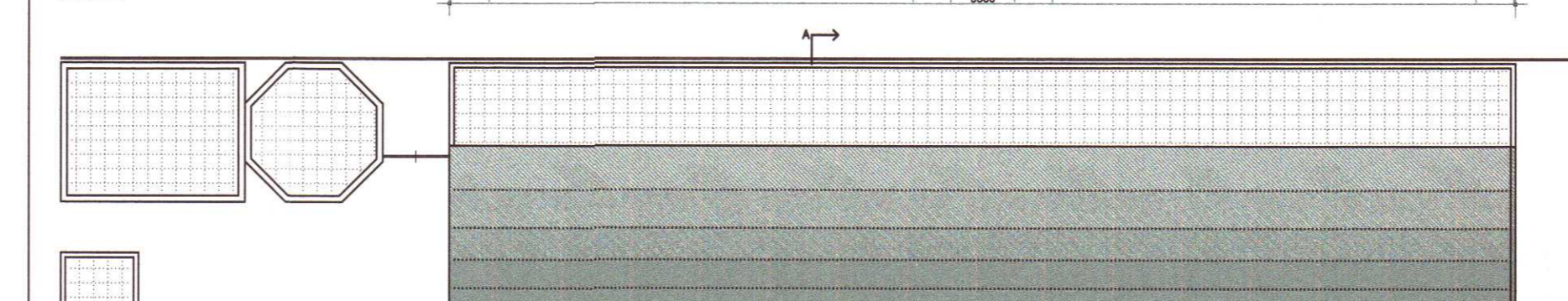
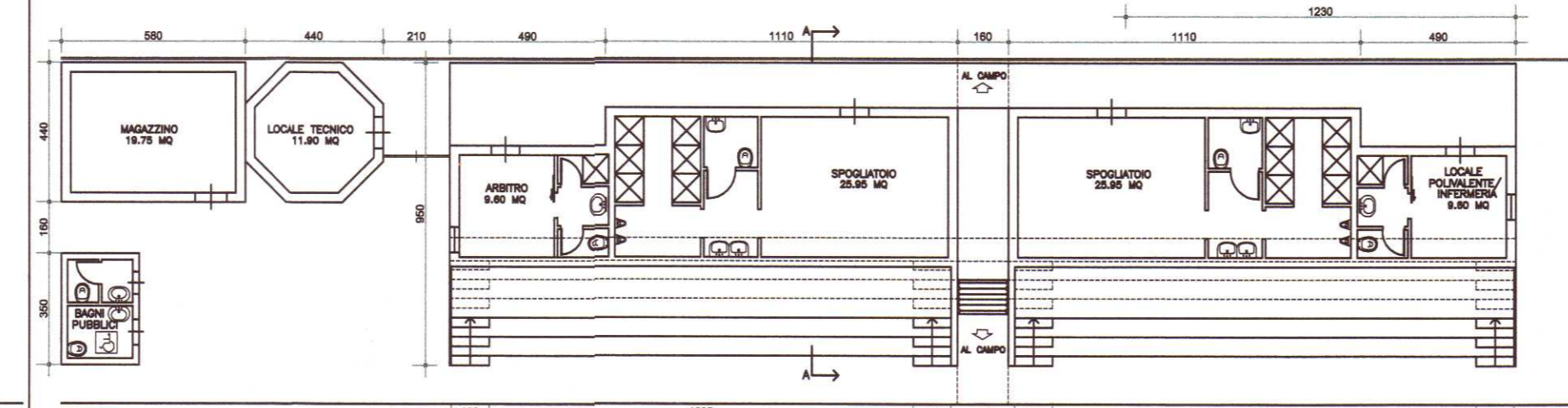
| EDIFICIO                     | Sc (mq) | H max (m) | Vol. (mc) |
|------------------------------|---------|-----------|-----------|
| 1 EDIFICIO POLIVALENTE       | 590     | 9.10      | 2910      |
| 2 TRIBUNA COPERTA SPOGLIATOI | 300     | 3.85      | 660       |
| 3 TRIBUNA COPERTA SPOGLIATOI | 370     | 3.50      | 550       |
| 4 SPOGLIATOI                 | 170     | 4.30      | 510       |
| 5 MAGAZZINO                  | 100     | 4.00      | 400       |
| 6 WC PUBBLICI                | 10      | 2.70      | 27        |
| 7 TENSOSTRUTTURA             | 305     | -         | -         |
| TOTALI                       | 1845    | -         | 5057      |



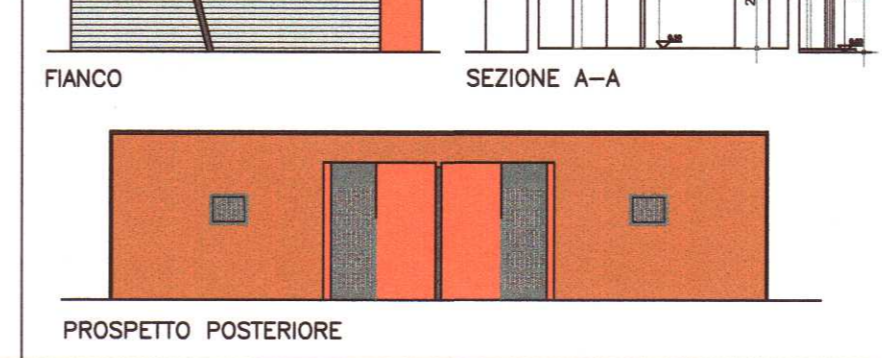
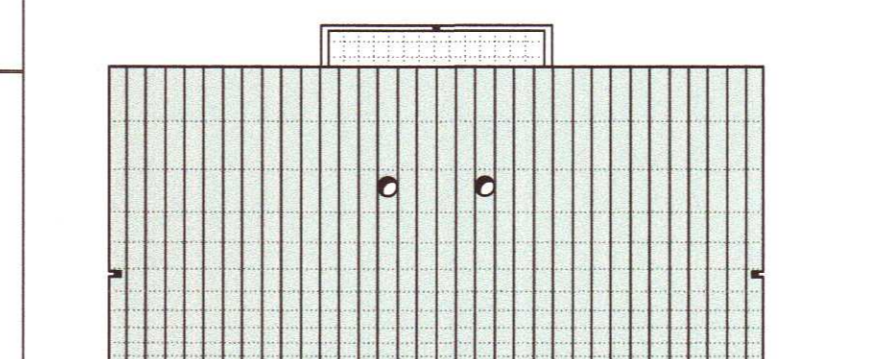
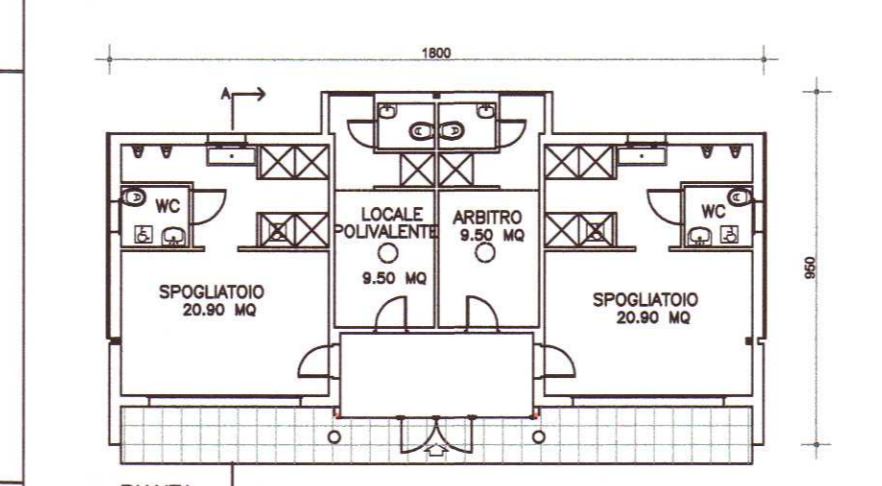
2 - TRIBUNA COPERTA-SPOGLIATOI - CAMPO A



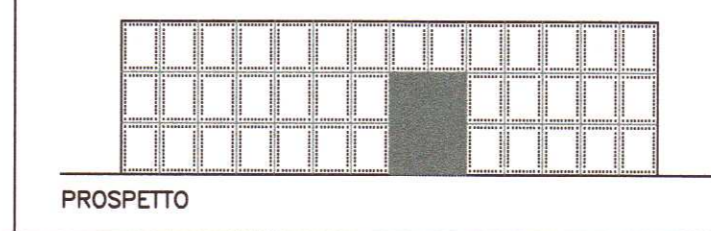
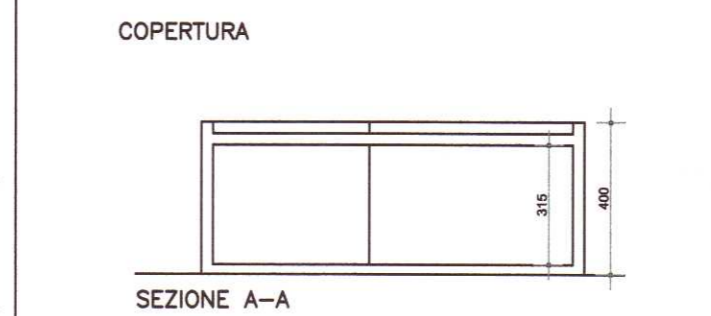
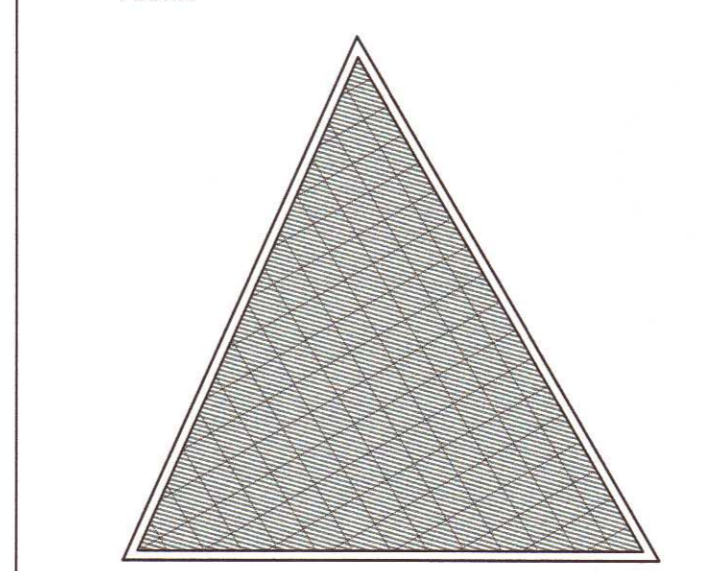
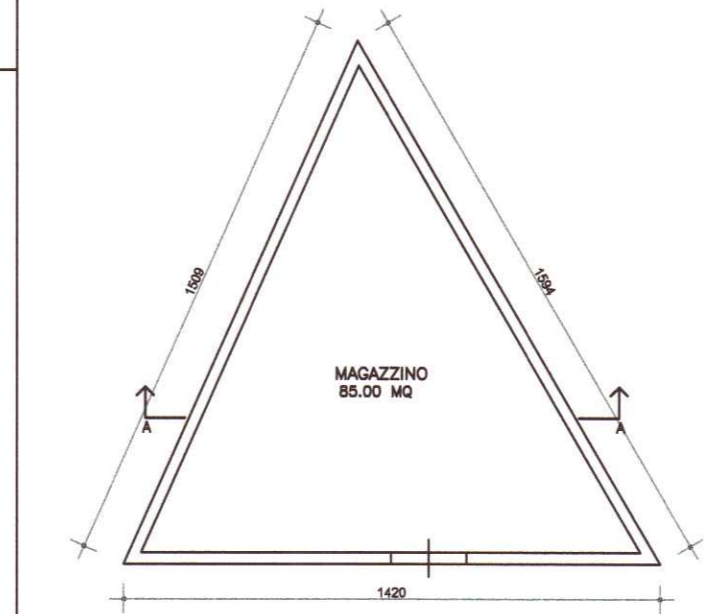
3 - TRIBUNA COPERTA-SPOGLIATOI - CAMPO B



4 - SPOGLIATOI - CALCETTO



5 - MAGAZZINO



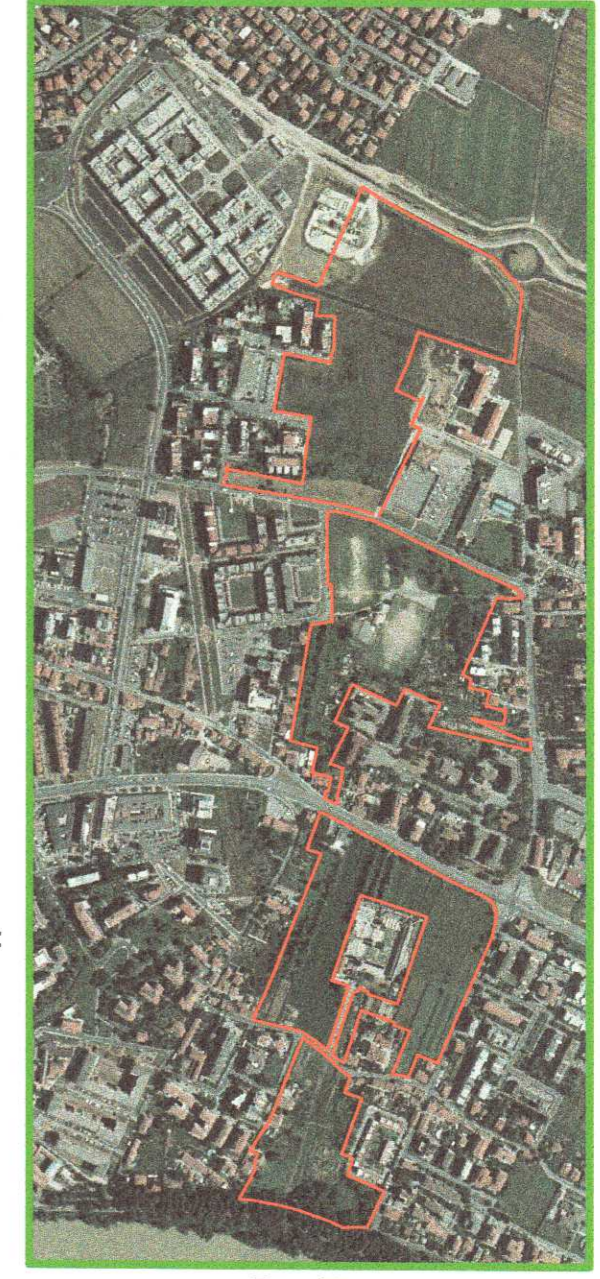
ELABORATO ADOTTATO  
CON DELIBERAZIONE  
Giunta Comunale  
Consiglio Comunale  
n° 83 del... 03 LUG. 2006

COMUNE DI PISA  
DIREZIONE URBANISTICA  
Piano Attuativo  
Cisanello - Area Filtro Verde  
Scheda norma n° 6/1

ALLEGATO 12



IL DIRIGENTE  
Arch. GABRIELE BERTI



Tav. 12  
UMI 3 piante prospetti e sezioni

Responsabile del procedimento:  
Arch. Gabriele BERTI  
Gruppo progettazione:  
Arch. Riccardo DAVINI  
Geom. Denise COSCI  
Geom. Carlo Alberto TOMEI

Collaborazione interna:  
Geom. Marina BONFANTI  
Geom. Paolo SBRANA  
Collaborazione esterna:  
Arch. Manrico LOGLI  
Arch. Luigi PIEROTTI