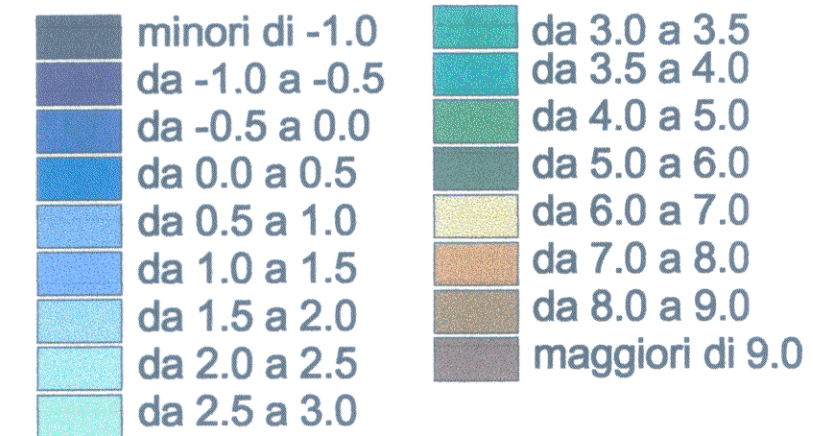


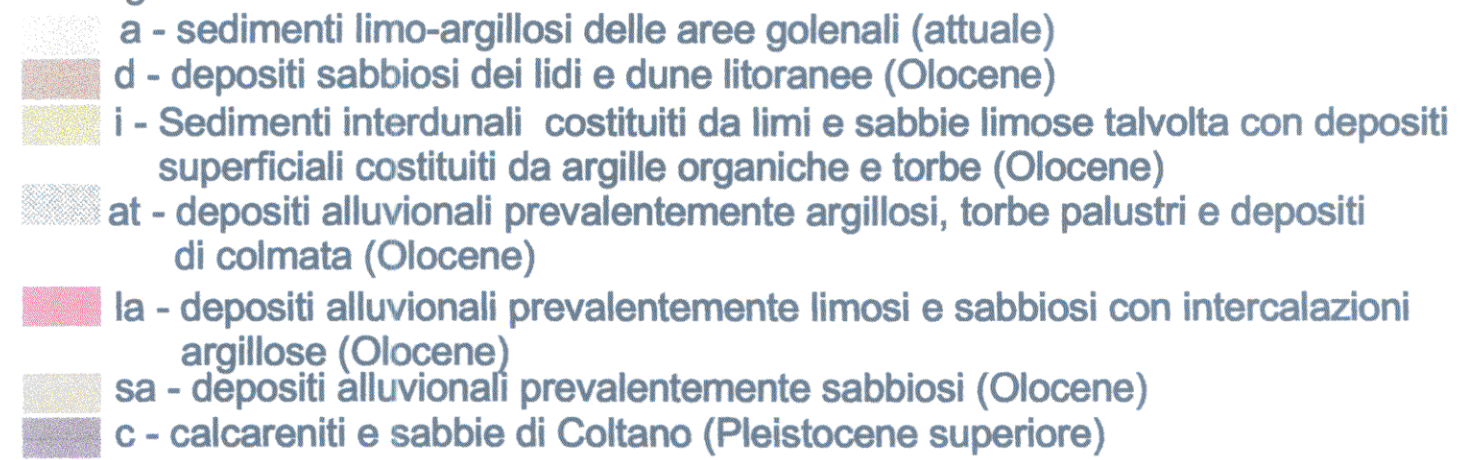
1 - Carta altimetrica

Quote

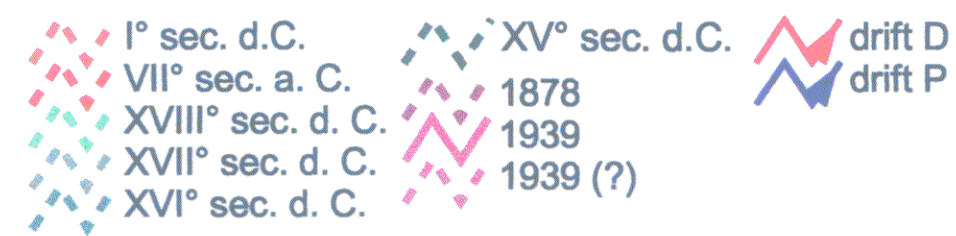


2 - Carta geologica

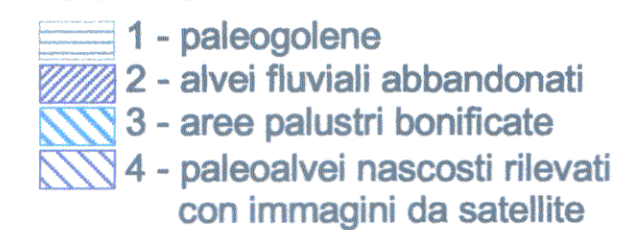
Geologia



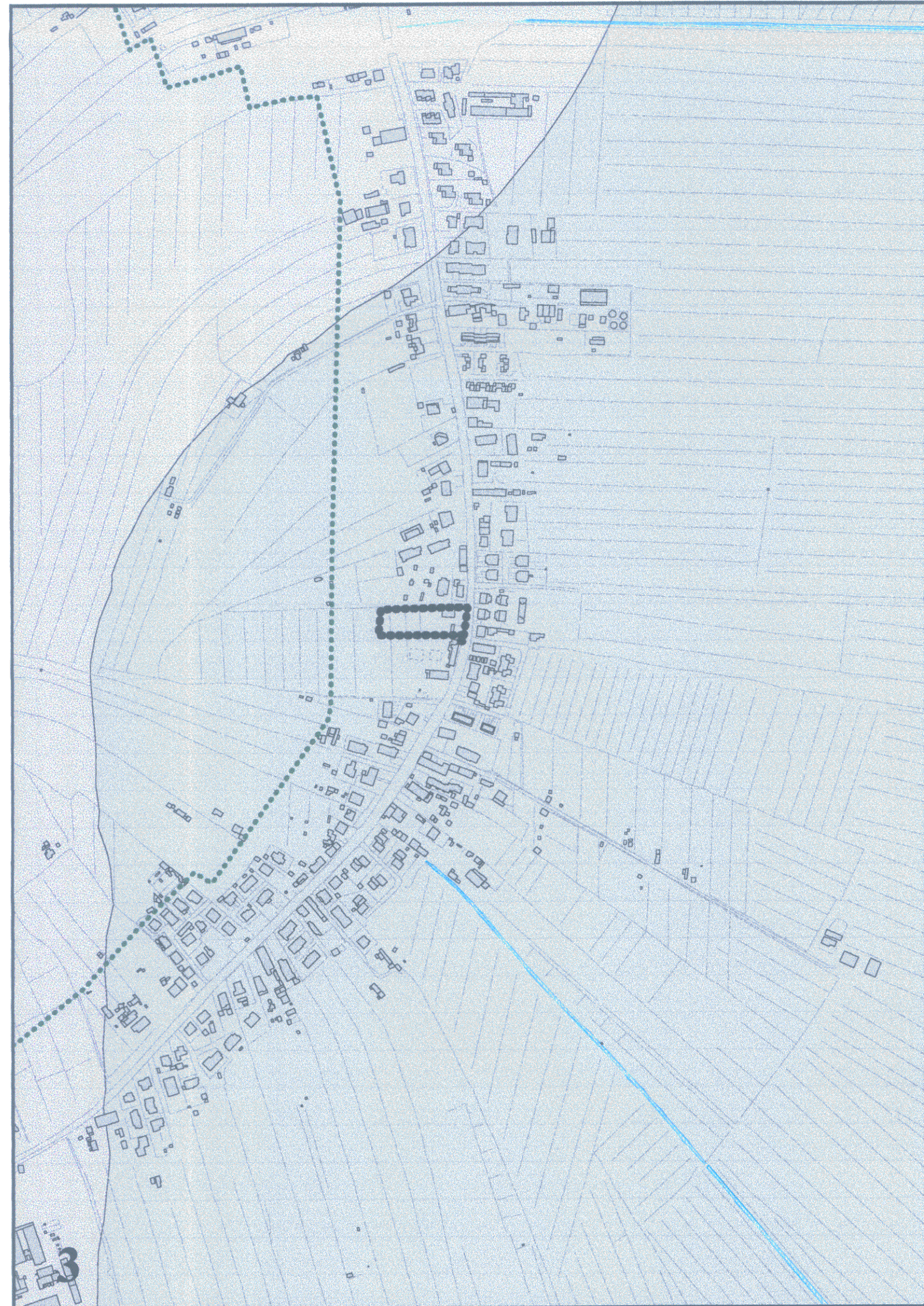
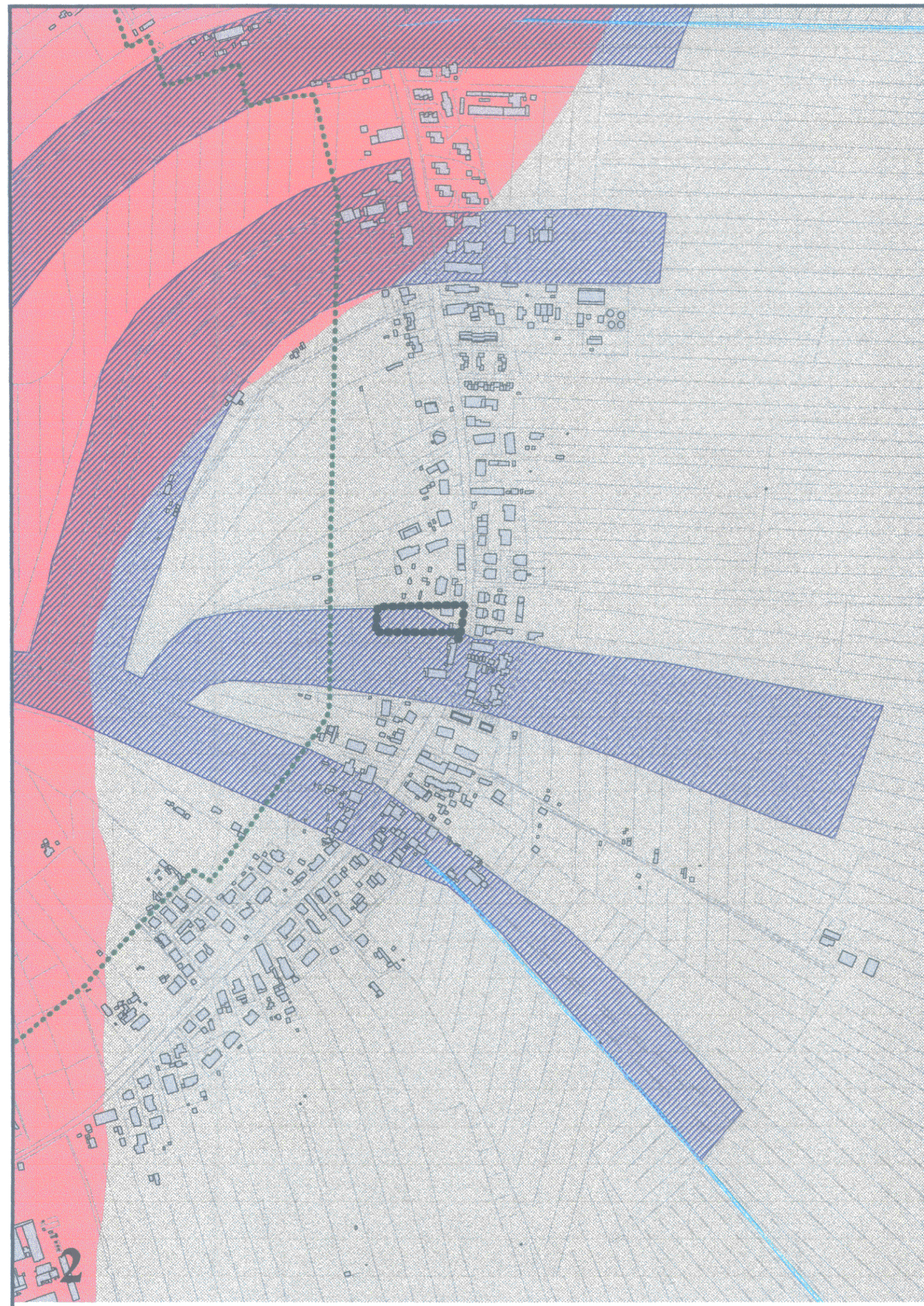
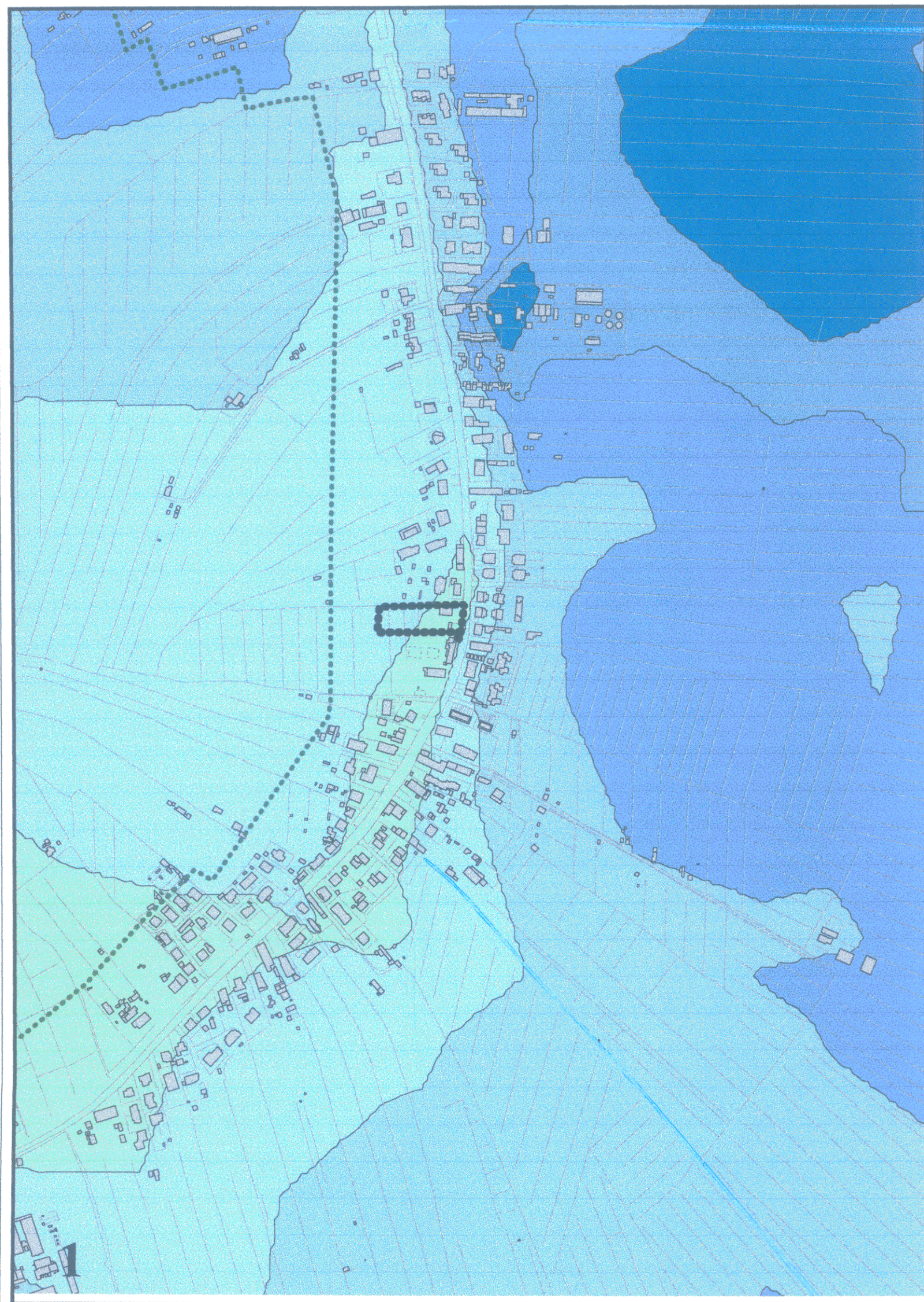
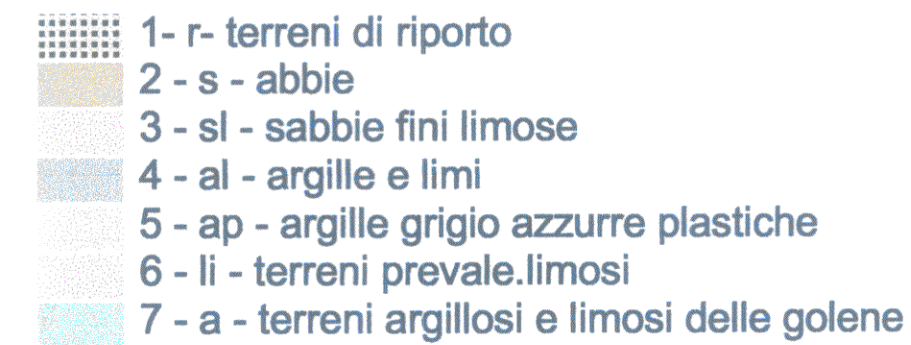
Linee della costa



Paleovalvei



3- Carta litotecnica



ALLEGATO 5



COMUNE DI PISA
DIREZIONE URBANISTICA

Piano Attuativo
Scheda norma n°22/1
Via Livornese - La Vettola

ELABORATO **ADOTTATO**
CON DELIBERAZIONE

Giunta Comunale
 Consiglio Comunale

n° 12 del 01 MAR. 2007



Responsabile del procedimento:
Arch. Gabriele BERTI

Gruppo progettazione:
Arch. Denise COSCI
Geom. Carlo Alberto TOMEI

Collaborazione interna:
Geom. Marina BONFANTI
Geom. Paolo SBRANA

Progetto preliminare:
Ing. Antonio GRASSO
R.U.P. Ing. Benedetto MAGGIO

Tavola 5
ANALISI DELLO STATO DI FATTO
Estratti degli elaborati di analisi del Piano Strutturale
Carta altimetrica, Carta geologica, Carta litotecnica

Tavole in scala 1:5.000

Pisa, settembre 2006