

GENERAL NOTES / NOTE GENERALI

- THE INFORMATION SHOWN ON PLANS COMES FROM TOPOGRAPHIC SURVEY PERFORMED IN JANUARY 1998 UNDER ANOTHER PROJECT AND FROM DATA COLLECTED FROM EXISTING MASTER PLAN DRAWINGS.
LE INFORMAZIONI SUI DISegni PROVENGONO DA RILEVATO TOPOGRAFICO ESEGUITO IN GENNAIO 1998 PER ALTRO PROGETTO E DA DISegni ESISTENTI.
- BEFORE STARTING ANY EXCAVATION WORK CONTRACTOR SHALL LOCATE WITH DETECTORS THE UNDERGROUND ELECTRIC LINE ALONG THE NEW PIPELINE ROUTE AND SHALL MARK THE LAYOUT ON THE SURFACE.
PRIMA DI INIZIARE QUALSIASI LAVORO DI SCAVO, L'APPALTATORE DOVRA' LOCALIZZARE CON RILEVATORI LA POSIZIONE DELLA LINEA ELETTRICA INTERRATA LUNGO IL TRAGITTO DELLA NUOVA TUBAZIONE E DOVRA' PICCHETTARLA IN SUPERFICIE.
- CONTRACTOR SHALL NOT DISTURB THE SURFACE NOR THE VEGETATION OUTSIDE THE EXISTING FENCE.
L'APPALTATORE NON DOVRA' DISTURBARE LA SUPERFICIE NE' LA VEGETAZIONE AL DI FUORI DELLA RECINZIONE ESISTENTE.
- ALL INTERIOR SURFACES OF LIFT STATION AND MANHOLE SHALL BE PAINTED WITH THREE COATS OF EPOXY RESIN PAINT.
TUTTE LE SUPERFICIE INTERNE DELLA STAZIONE DI SOLLEVAMENTO E DEI POZZETTI DEVONO ESSERE TRATTATE CON TRE MANI DI VERNICE A RESINA EPOSSIDICA.
- CONTRACTOR SHALL NOT DUMP ANY MATERIAL OUTSIDE THE EXISTING FENCE.
L'APPALTATORE NON DOVRA' SCARICARE MATERIALI AL DI FUORI DELLA RECINZIONE ESISTENTE.
- CONTRACTOR SHALL NOT CUT ANY TREE OR SHRUB.
L'APPALTATORE NON DOVRA' TAGLIARE ALBERI NE' ARBUSTI.
- CONTRACTOR SHALL SCHEDULE SO AS THERE WILL BE NO CONSTRUCTION ACTIVITY AND THE FACILITY WILL BE OPERATIONAL DURING THE BEACH SEASON FROM APRIL TO OCTOBER.
L'APPALTATORE DOVRA' ORGANIZZARE IL LAVORO IN MODO DA NON AVERE ATTIVITA' LAVORATIVE, E DI LASCIARE LA STRUTTURA OPERATIVA DURANTE LA STAGIONE BALNEARE DA APRILE AD OTTOBRE.
- BENCH MARK CONSISTS OF STEEL BOLT ENCASED IN EXISTING STRUCTURE AND A RED MARK ALL AROUND.
IL CAPOSALDO E' EVINCENZIATO DA UN BULLONE DI ACCIAIO FISSATO NELLA STRUTTURA ESISTENTE E CENCHIATO IN ROSSO.
- CONTRACTOR SHALL VERIFY IN THE FIELD THE EXACT LOCATION OF THE POINTS OF CONNECTION BETWEEN NEW AND EXISTING UTILITY LINES.
L'APPALTATORE DOVRA' VERIFICARE IN CAMPO L'ESATTA POSIZIONE DEI PUNTI DI CONNESSIONE TRA LE LINEE DI SERVIZIO ESISTENTI E NUOVI.
- ALL ELEVATIONS ARE REFERRED TO THE BENCH MARKS. THE ELEVATIONS SHOWN ARE REFERRED TO M.S.L.
TUTTI LE QUOTE SONO RIFERITE AI CAPOSALDI E LE QUOTE MOSTRATE SONO RIFERITE AL LIVELLO MIEDE DEL MARE.
- ALL DIMENSIONS AND ELEVATIONS ARE IN METERS UNLESS OTHERWISE INDICATED.
TUTTI LE DIMENSIONI E QUOTE DI LIVELLO SONO IN METRI SALVO DIVERSA INDICAZIONE.
- PIPE DIAMETERS ARE INDICATED IN MM (Ø100) OR INCHES (6").
I DIAMETRI DELLE TUBAZIONI SONO INDICATI IN MM (Ø100) O IN POLLICI (6").
- ALL REMOVED PAVEMENTS AND THOSE DAMAGED DURING CONSTRUCTION SHALL BE RESTORED AS EXISTING AFTER NEW WORK HAS BEEN PERFORMED.
TUTTI I PAVIMENTI RIMOSSI O DANNEGGIATI DURANTE I LAVORI DEVRANNO ESSERE RICOSTRUITI COME GLI ESISTENTI DOPO L'ESECUZIONE DEI NUOVI LAVORI.
- FOR DEMOLITION PURPOSES, THE EXISTING ASPHALT PAVEMENT CAN BE CONSIDERED 10cm THICK.
PER LA DEMOLIZIONE, IL PAVIMENTO D'ASFALTO ESISTENTE PUO' ESSERE ASSUNTO SPESSE 10cm.
- CONTRACTOR SHALL ASSUME THAT 50% OF THE EXCAVATION ALONG THE ACCESS ROAD HAS TO BE PERFORMED BY HAND, DUE TO VICINITY OF EXISTING UNDERGROUND ELECTRIC LINE.
L'APPALTATORE DOVRA' ASSUMERE CHE IL 50% DELLO SCAVO LUNGO LA STRADA DI ACCESSO DOVRA' ESSERE ESEGUITO A MANO IN SEGUITO ALLA VICINANZA DELLA LINEA ELETTRICA INTERRATA.
- WHENEVER THE NEW PIPELINE CROSSES EXISTING FENCES, CONTRACTOR SHALL DIG UNDER THE FENCE WITHOUT REMOVING IT.
QUANDO LA NUOVA TUBAZIONE ATTRAVERSA RECINZIONI ESISTENTI, L'APPALTATORE DOVRA' SCAVARE SOTTO LA RECINZIONE SENZA RIMOVERLA.
- FOR DETAILS OF WATER/SANITARY SEWER INTERRELATIONSHIP SEE SHEET E-1.
PER I DETTAGLI DI INTERAZIONE TRA TUBI ACQUA/FOGNAIURA VEDERE TAVOLA E-1.

LEGEND / LEGENDA

EXISTING ESISTENTE	NEW NUOVO	DESCRIPTION DESCRIZIONE
[Symbol]	[Symbol]	BUILDING OR STRUCTURE EDIFICIO O STRUTTURA
[Symbol]	[Symbol]	ENTRY INGRESSO
[Symbol]	[Symbol]	ASPHALT PAVEMENT PAVIMENTAZIONE IN ASFALTO
[Symbol]	[Symbol]	SAND AREA AREA A VERDE
[Symbol]	[Symbol]	CONCRETE PAVEMENT PAVIMENTAZIONE IN CALCESTRUZZO
[Symbol]	[Symbol]	CONCRETE CURB CONDUITO IN CALCESTRUZZO
[Symbol]	[Symbol]	CHAIN-LINK FENCE RECINZIONE A RETI METALLICA
[Symbol]	[Symbol]	DIRECTION OF FLOW DIREZIONE DI FLUSSO
[Symbol]	[Symbol]	SPOT ELEVATION QUOTA ALTIMETRICA
[Symbol]	[Symbol]	CONTOUR LINE CURVA DI LIVELLO
[Symbol]	[Symbol]	WATER LINE LINEA ACQUA
[Symbol]	[Symbol]	STORM DRAIN LINE WITH CATCH BASIN LINEA DRENAGGIO CON CADITOIA
[Symbol]	[Symbol]	SANITARY SEWER LINE WITH MANHOLE LINEA FOGNATURA CON POZZETTO
[Symbol]	[Symbol]	FORCED SANITARY SEWER LINE LINEA FORZATA DI FOGNATURA
[Symbol]	[Symbol]	UNDERGROUND LOW VOLTAGE LINE LINEA ELETTRICA INTERRATA DI BASSA TENSIONE
[Symbol]	[Symbol]	LIGHTING POLE PALO ILLUMINAZIONE
[Symbol]	[Symbol]	GRASS TRAP SEPARATORE GRASSI
[Symbol]	[Symbol]	SEPTIC TANK OR IMHOFF TANK FOSSA SETTICA O VASCA IMHOFF
[Symbol]	[Symbol]	ELECTRIC MANHOLE POZZETTO ELETTRICO
[Symbol]	[Symbol]	BENCH MARK NUMBER NUMERO CAPOSALDO
[Symbol]	[Symbol]	TOP ELEVATION, INVERT ELEVATION QUOTA SUPERIORE, QUOTA SCORRIMENTO
[Symbol]	[Symbol]	BOTTOM ELEVATION QUOTA DI FONDO
[Symbol]	[Symbol]	TREE ALBERO
[Symbol]	[Symbol]	UTILITY LINE DEMOLITION LINEA DI SERVIZIO DA DEMOLIRE
[Symbol]	[Symbol]	PAVEMENT DEMOLITION PAVIMENTO DA DEMOLIRE
[Symbol]	[Symbol]	DEMOLISH MANHOLE COMPLETELY DEMOLIRE IL TUBO POZZETTO

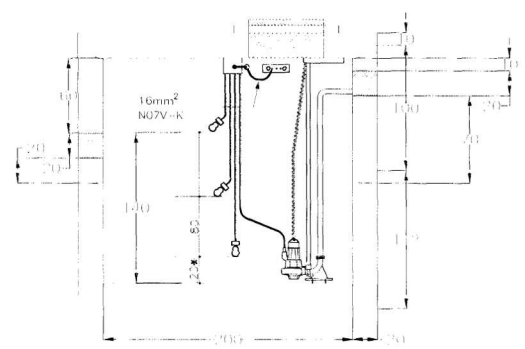
BENCH MARK SCHEDULE
TABELLA CAPOSALDI

B M	N	I	ELEVATION QUOTA
BM A	400.591	591.604	2.215
BM B	69.458	165.575	2.593
BM C	140.973	82.573	3.987

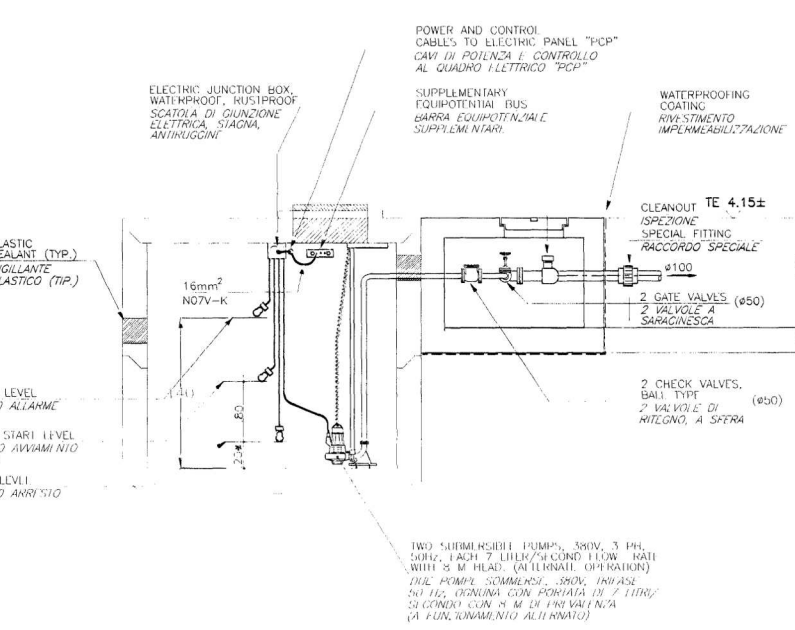
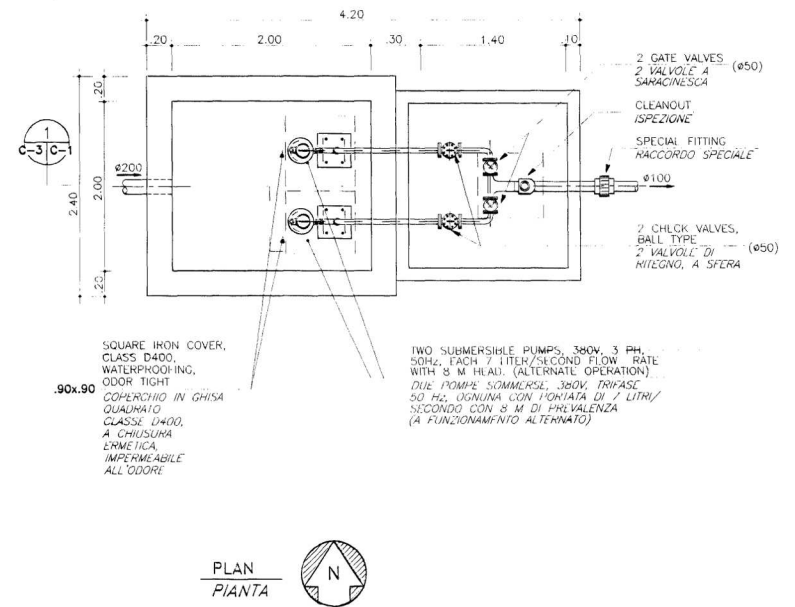
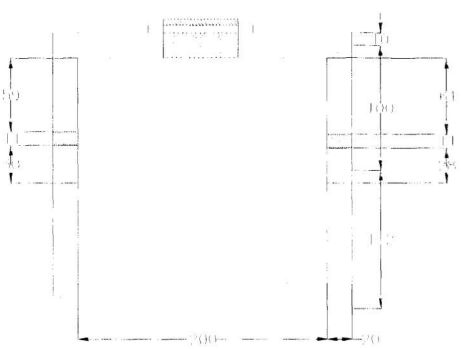
LIST OF ABBREVIATIONS
LISTA ABBREVIATURE

SYMBOL	ABBREVIATION	DESCRIPTION	DESCRIPTION
Ø	DIAMETER	DIAMETRO	DIAMETRO
APPROX	APPROXIMATE	APPROXIMATO	APPROXIMATO
BLDG	BUILDING	EDIFICIO	EDIFICIO
CL	CENTER LINE	LINEA CENTRALE	LINEA CENTRALE
CM	CENTIMETER	CENTIMETRO	CENTIMETRO
DIA	DIAMETER	DIAMETRO	DIAMETRO
DWG	DRAWING	TAVOLA	TAVOLA
E	EAST	EST	EST
EA	EACH	OGNI	OGNI
EL	ELEVATION	QUOTA	QUOTA
EXIST	EXISTING	ESISTENTE	ESISTENTE
F.F.L.	FINISHED FLOOR ELEVATION	QUOTA PAVIMENTO FINITO	QUOTA PAVIMENTO FINITO
ID	INSIDE DIAMETER	DIAMETRO INTERNO	DIAMETRO INTERNO
M	METER	METRO	METRO

1 LIFT STATION DETAILS
PARTICOLARI STAZIONE DI SOLLEVAMENTO



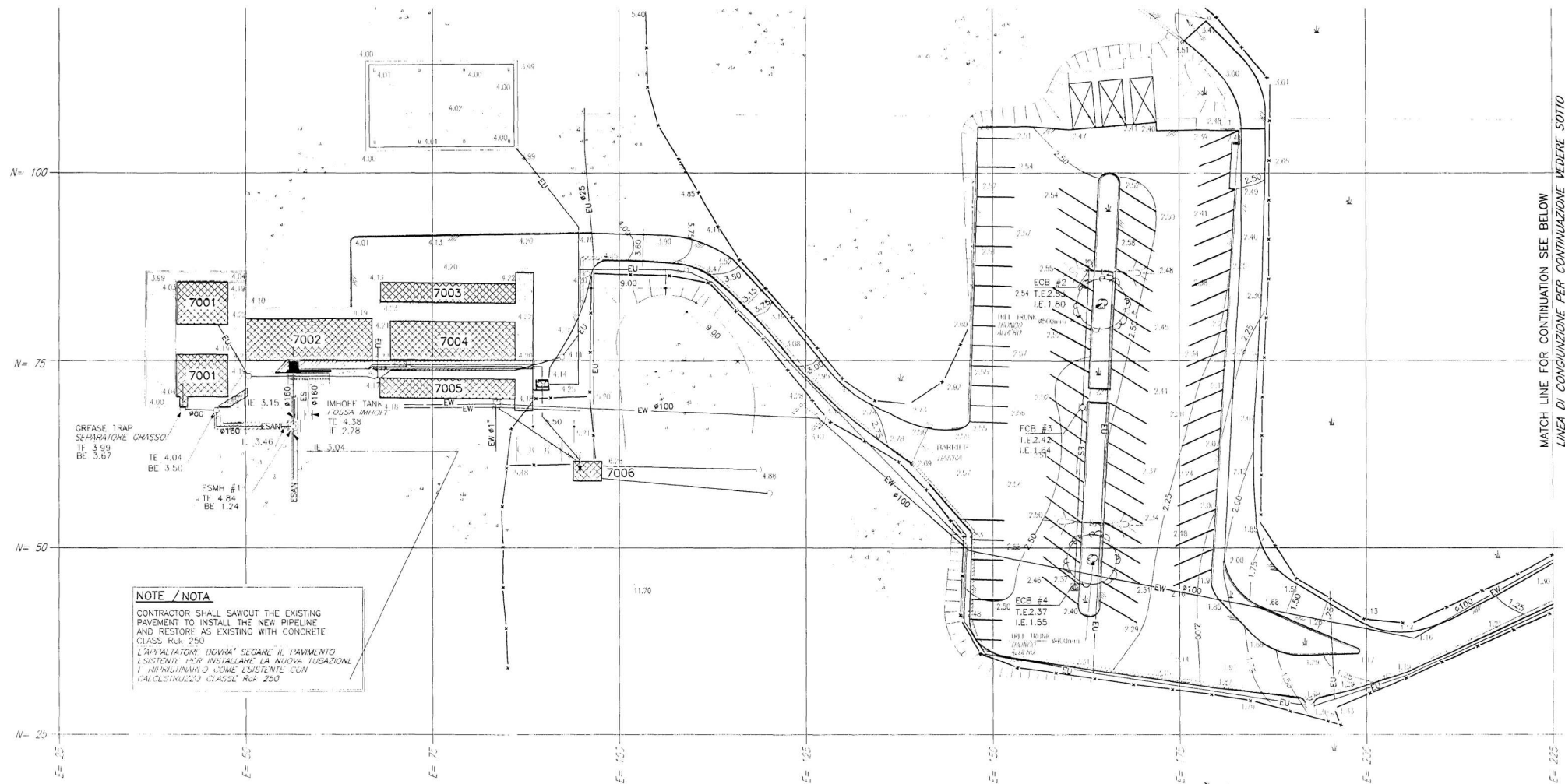
2 DETAILS
PARTICOLARE



DIMENSIONS TO BE VERIFIED AND ADJUSTED AS REQUIRED BY PUMP INSTALLER.
LE DIMENSIONI DEVRANNO ESSERE VERIFICATE IN BASE ALLA POMPA INSTALLATA.

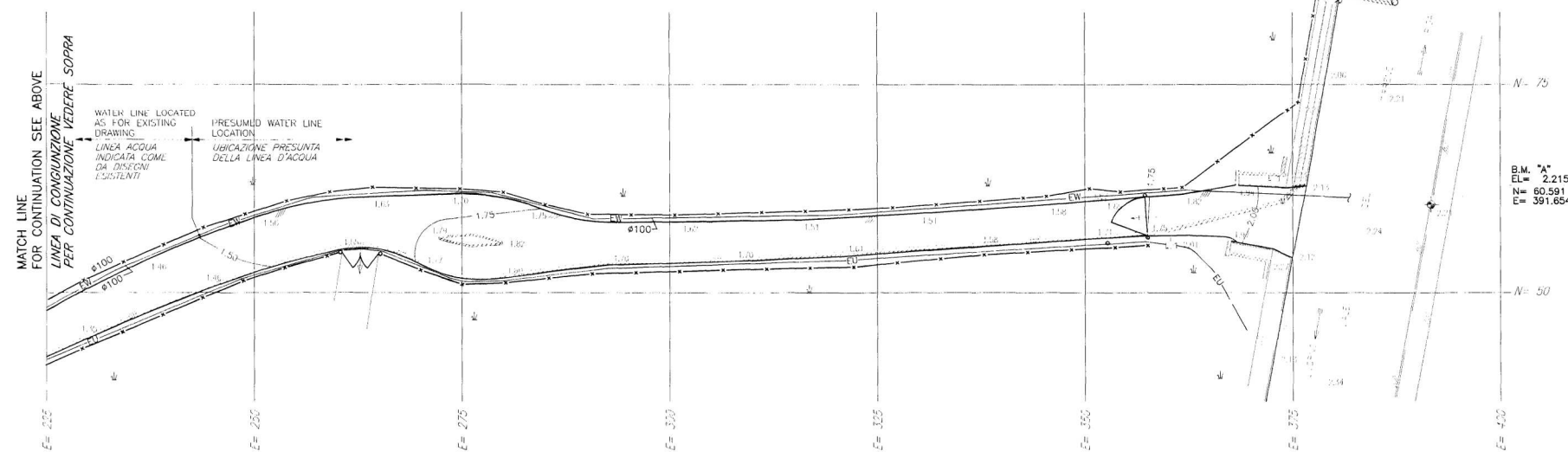
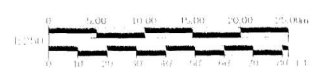


CAMP DARBY - LIVORNO ITALY	
PROJECT NO.	EJ0605002 - CONNECT BEACH FACILITY TO CITY SEWER TRENDA, PISA, ITALY
PROJECT NAME	EJ0605002 - COLLEGAMENTO STAGIA CON LA FOGNATURA DI TRENDA, PISA, ITALIA
SHEET TITLE	NOTES, LEGENDA E PARTICOLARI
DRAWING NUMBER	C-1
DATE	AS BUILT
SCALE	AS SHOWN
SHEET	4



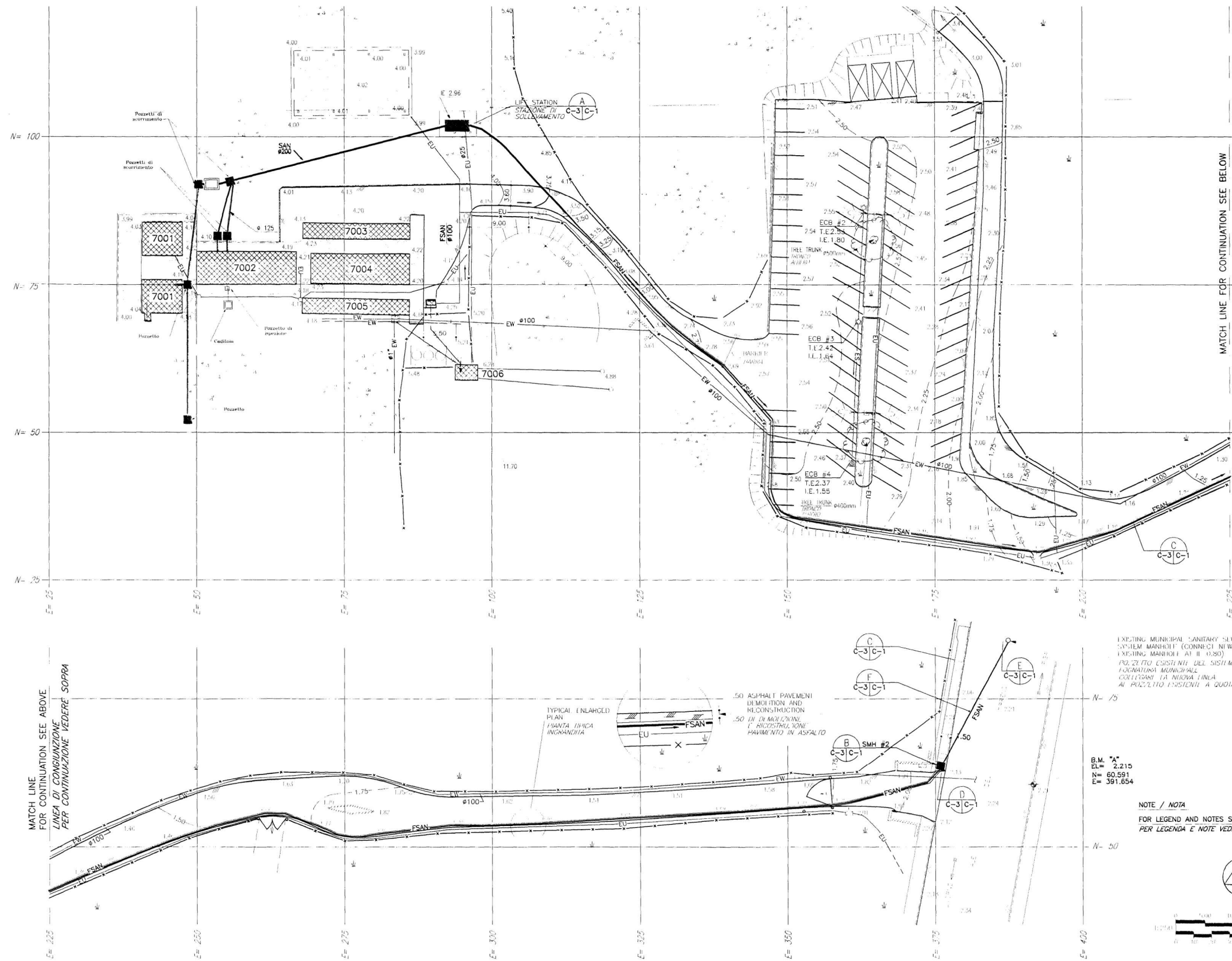
NOTE / NOTA
 CONTRACTOR SHALL SAWCUT THE EXISTING PAVEMENT TO INSTALL THE NEW PIPELINE AND RESTORE AS EXISTING WITH CONCRETE CLASS R/L 250
 L'APPALTATORE DOVRÀ SEGARE IL PAVIMENTO ESISTENTE PER INSTALLARE LA NUOVA TUBAZIONE E RISTABILIRLO COME ESISTENTE CON CALCESTRUZZA CLASSE R/L 250

NOTE / NOTA
 FOR LEGEND AND NOTES SEE SHEET C-1
 PER LEGENDA E NOTE VEDERE TAVOLA C-1



B.M. "A"
 EL= 2.215
 N= 60.591
 E= 391.654

CMR				CAMP DARBY - LIVORNO ITALY	
EJ06905002 - CONNECT BEACH FACILITY TO CITY SEWER TIRRENIA, PISA, ITALY				EJ06905002 - COLLEGAMENTO SPIAGGIA CON LA FOGNATURA DI TIRRENIA, PISA, ITALIA	
SHEET TITLE				EXISTING CONDITIONS AND DEMOLITIONS PLAN	
DRAWING NUMBER				C-2	
DESIGN FILE NAME				AS BUILT	
SCALE AS SHOWN				DATE	
SHEET 2				OF 4	



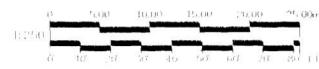
MATCH LINE FOR CONTINUATION SEE BELOW
LINEA DI CONGIUNZIONE PER CONTINUAZIONE VEDERE SOTTO

MATCH LINE FOR CONTINUATION SEE ABOVE
LINEA DI CONGIUNZIONE PER CONTINUAZIONE VEDERE SOPRA

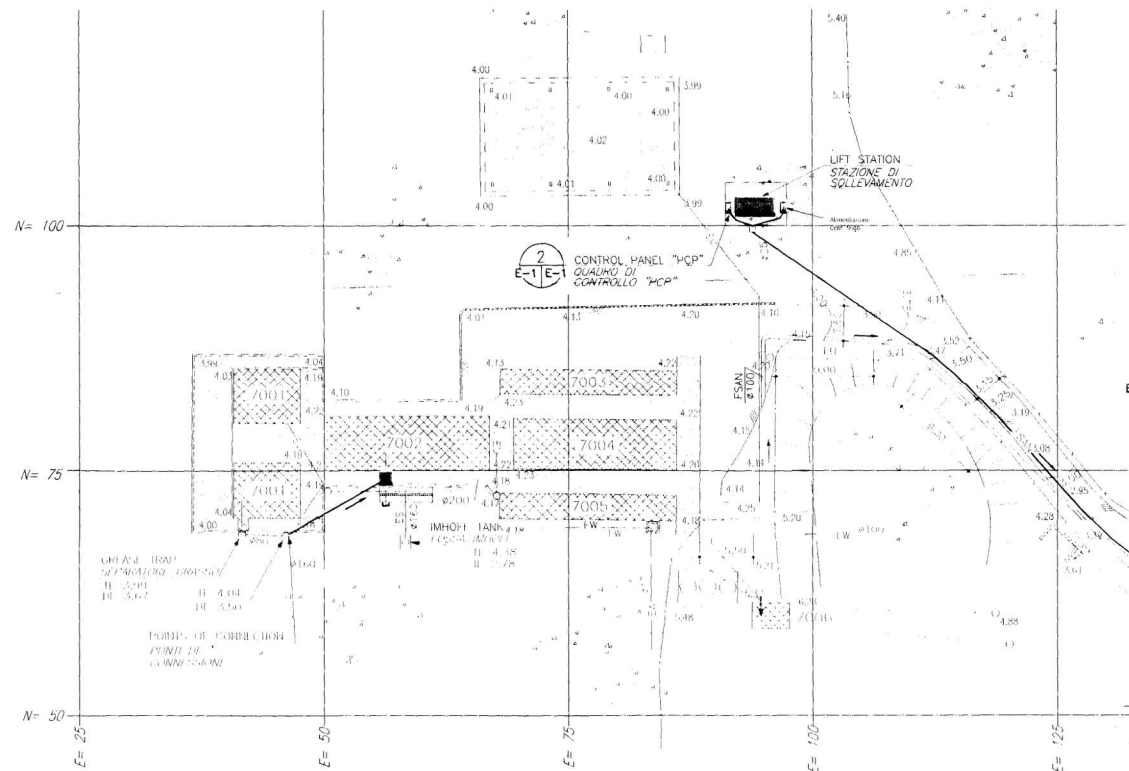
EXISTING MUNICIPAL SANITARY SEWER SYSTEM MARHOTT (CONNECT NEW LINE TO EXISTING MARHOTT AT R.L. 0.80) PROGETTO COSTRUTTO DEL SISTEMA DI FOGNATURA MUNICIPALE COLLEGARE LA NUOVA LINEA AL PROZETTO ESISTENTE A QUOTA R.L. 0.80)

B.M. "A"
EL= 2.215
N= 60.551
E= 391.654

NOTE / NOTA
FOR LEGEND AND NOTES SEE SHEET C-1
PER LEGENDA E NOTE VEDERE TAVOLA C-1

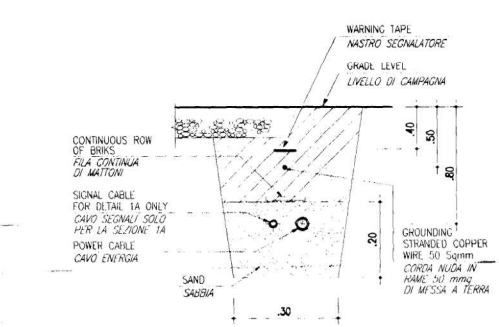
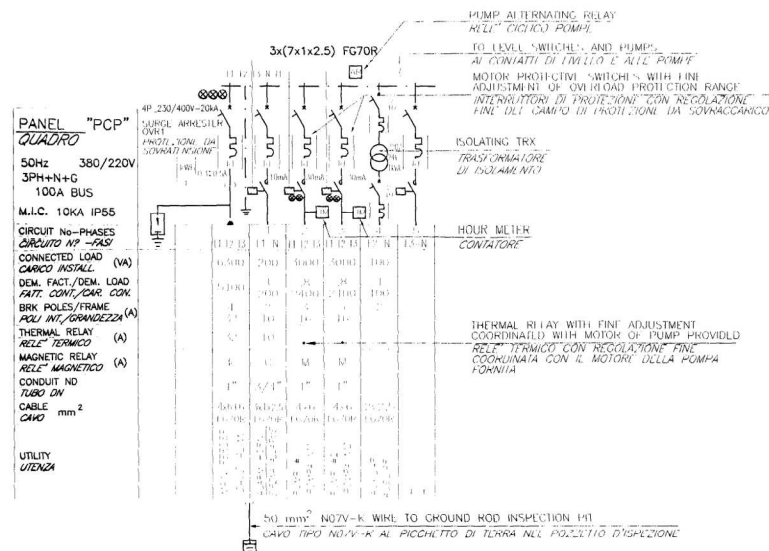


CAMP DARBY - LIVORNO ITALY			
FILE: EJ06805002 - CONNECT BEACH FACILITY TO CITY SEWER TIRRENA, PISA, ITALY			
EJ06805002 - COLLEGAMENTO SPARGIA CON LA FOGNATURA DI TIRRENA, PISA, ITALIA			
SHEET TITLE: NEW CONDITIONS PLAN			
PANTA NUOVE CONDIZIONI			
DRAWING NUMBER: C-3	DESIGN FILE NAME:	AS BUILT	
SCALE: AS SHOWN	DATE:	SHEET 3	OF 4

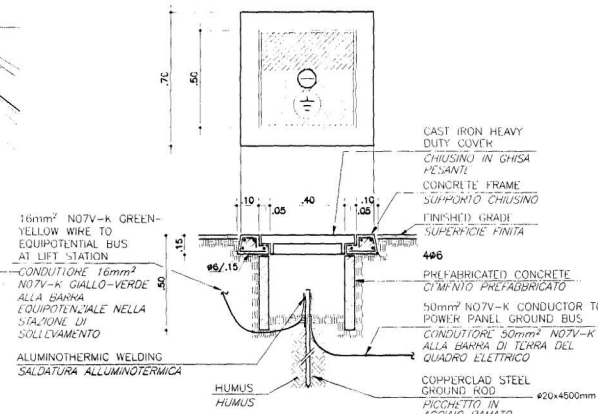


ELECTRICAL NOTES
NOTE ELETTRICHE

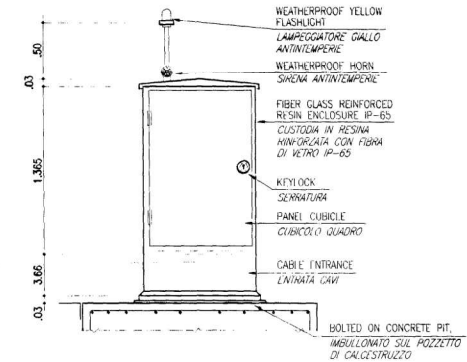
PROVIDE IN THE EXISTING ELECTRIC PANEL A NEW 4P-32A CIRCUIT BREAKER WITH PROPER INTERRUPTING CAPACITY.
PROVIDE FEEDER CABLES AND CONDUITS UP TO NEW FLOOR MOUNTED PUMP CONTROL PANEL.
"PROVVEDERE NEL QUADRO ELETTRICO ESISTENTE UN INTERRUPTORE AUTOMATICO 4P-32A CON POTERE D'INTERRUZIONE ADEGUATO. PROVVEDERE CAVO DI ALIMENTAZIONE E TUBAZIONI FINO AL QUADRO DI CONTROLLO POMPE."



1A **1** UNDERGROUND CABLE DETAIL
PARTICOLARE CAVO INTERRATO



3 GROUND ROD INSPECTION PIT DETAIL
PARTICOLARE DISPENSORE CON POZZETTO

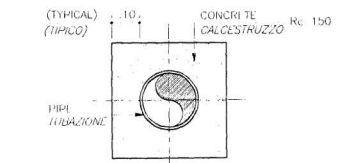


2 TYPICAL "PCP" ENCLOSURE DETAIL
PARTICOLARE TIPICO CUSTODIA "PCP"

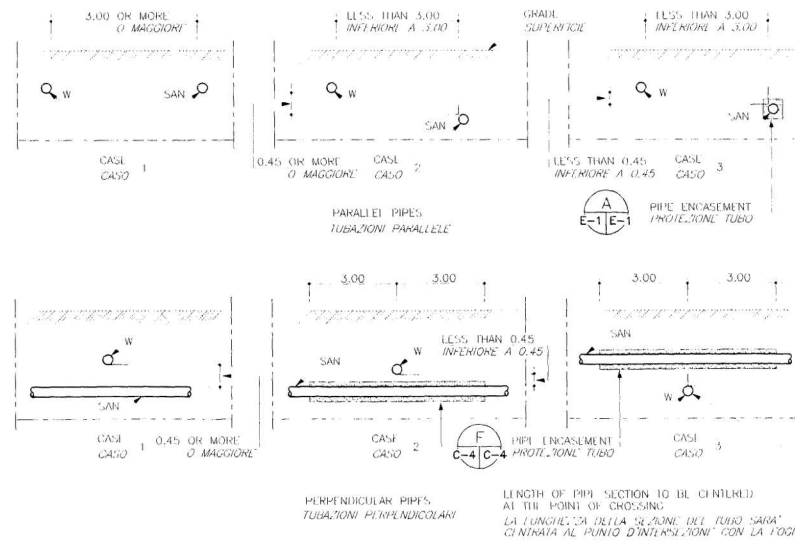
CONTROL DESCRIPTION
DESCRIZIONE CONTROLLI

THREE FLOAT SWITCHES SHALL BE USED TO CONTROL SUMP LEVEL ONE FOR PUMP TURN ON, ONE FOR PUMP TURN-OFF, AND ONE FOR THE HIGH WATER ALARM. WHEN SUMP LEVEL RISES UPPER LEVEL SWITCH SHALL ENERGIZE AND START PUMP. WITH PUMP OPERATING, SUMP LEVEL LOWERS TO LOW SWITCH TURN-OFF SITTING AND PUMP SHALL STOP. ALTERNATING RELAY SHALL INDEX ON STOPPING OF PUMP SO THAT PUMP WILL START ON NEXT OPERATION. IF LEVEL REACHES THE HIGH WATER ALARM LEVEL, ALARM SWITCH SHALL ENERGIZE AND SIGNAL THE ALARM. IF ONE PUMP SHOULD FAIL FOR ANY REASON, THE SECOND PUMP SHALL OPERATE ON THE OVERRIDE CONTROL AND THE ALARM SHALL BE ACTIVATED. ALL LEVEL SWITCHES SHALL BE ADJUSTABLE FOR LEVEL SETTING FROM THE SURFACE.

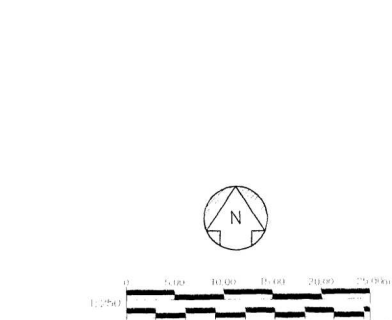
DOVRANNO ESSERE USATI TRE INTERRUTTORI A GALLIGIANTE PER CONTROLLARE IL LIVELLO. UNO PER AVVIARE UNA POMPA, UNO PER ANNESSARE LA POMPA ED UNO PER L'ALLARME ALTO LIVELLO ACQUA. AL SALIRE DEL LIVELLO L'INTERUTTORE PIU' ALTO SI ENERGIZZA ED AVVIA LA POMPA. CON LA POMPA IN FUNZIONE, IL LIVELLO DELL'ACQUA OVE SCENDERE AL LIVELLO DELL'INTERUTTORE PIU' BASSO E LA POMPA SI ANNESSA. IL RELÈ "CICLO POMP" SU STOP LA POMPA COSICCHE' LA POMPA GREGARIA SARA' AVVIATA NEL FUNZIONAMENTO SUCCESSIVO. SE IL LIVELLO RAGGIUNGE IL LIVELLO ALTO DI ALLARME, L'INTERUTTORE DI ALLARME SI ENERGIZZA E SEGNA LA ALLARME. SE UNA POMPA SI GUASTA PER QUALSIASI RAGIONE, LA SECONDA POMPA DEVE AVVIARE COL CONTROLLO SUPERIORE E DEVE ESSERE SEGNALETO L'ALLARME. TUTTI GLI INTERRUTTORI DI LIVELLO DEVONO ESSERE REGOLABILI DAL FRONTE.



A PIPE ENCASEMENT
PROTEZIONE TUBO



TYPICAL WATER/SANITARY INTERRELATIONSHIP DETAILS
PARTICOLARI TIPICI DI INTERSEZIONE TUBI ACQUA E FOGNATURA

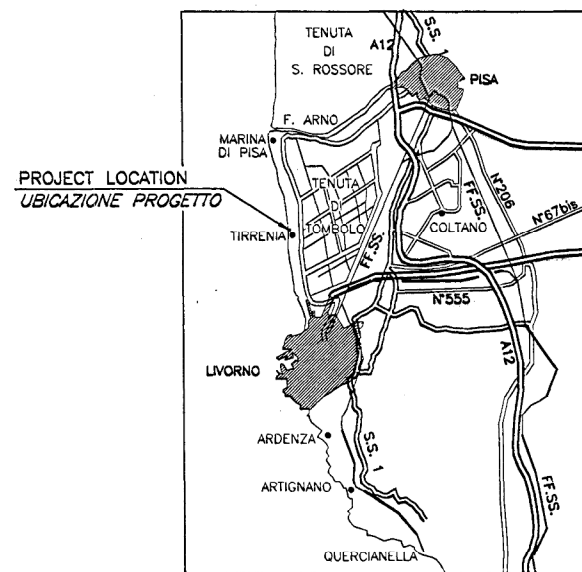


CAMP DARBY - LIVORNO ITALY	
TITLE: E/06605002 - CONNECT BEACH FACILITY TO CITY SEWER	TIRRENIA, PISA, ITALY
E/06605002 - COLLEGAMENTO SPIAGGIA CON LA FOGNATURA DI TIRRENIA, PISA, ITALIA	
SHEET TITLE: ELECTRICAL INSTALLATIONS	
APPARTI ELETTRICI	
DWG NUMBER: E-1	DESIGN FILE NAME: AS BUILT
SCALE: AS SHOWN	DATE: SHEET 4 OF 4

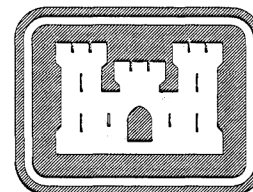
U.S. ARMY CORPS OF ENGINEERS
EUROPE DISTRICT
APO AE 09096

EJ0690S002 - CONNECT BEACH FACILITY TO CITY SEWER

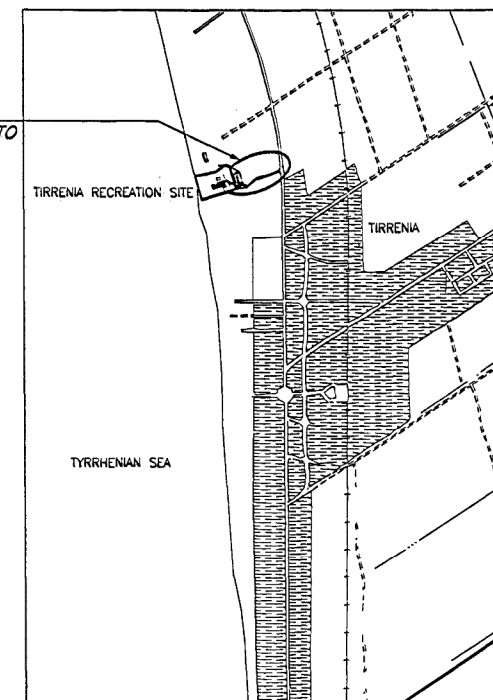
TIRRENIA, PISA, ITALY



GENERAL LAYOUT NO SCALE
PLANIMETRIA GENERALE NON IN SCALA



PROJECT LOCATION
UBICAZIONE PROGETTO



AREA PLAN NO SCALE
PLANIMETRIA DELL'AREA NON IN SCALA

SHT.No. No. TAVOLA	FILE No. No. ARCHIVIO	REVISIONS/REVISIONI REV. No. AM/COP.No.	TITLE / TITOLO
T-1			COVER SHEET AND INDEX COPERTINA ED ELENCO DISEGNI
EJ0690S002 - CONNECT BEACH FACILITY TO CITY SEWER			
C-1			NOTES, LEGEND AND DETAILS NOTE, LEGENDA E PARTICOLARI
C-2			EXISTING CONDITIONS AND DEMOLITIONS PLAN PIANTA CONDIZIONI ESISTENTI E DEMOLIZIONI
C-3			NEW CONDITIONS PLAN PIANTA CONDIZIONI ESISTENTI
E-1			ELECTRICAL INSTALLATIONS IMPIANTI ELETTRICI

SYMBOL	DESCRIPTION	DATE APPROVED

SIGNATURES AFFIXED BELOW INDICATE OFFICIAL RECOMMENDATION AND APPROVAL OF ALL DRAWINGS AS INDEXED ON THIS SHEET
APPROVAL RECOMMENDED BY: [Signature]
DATE: 14 JUNE 1999
FILE NO. 832-10-015
DEPUTY ENGINEER, PHM

THE OX GROUP
SOME ITALIAN DESIGN GROUPS
U.S. ARMY CORPS OF ENGINEERS
EUROPE DISTRICT
APO AE 09096

EJ0690S002 - CONNECT BEACH FACILITY TO CITY SEWER
TIRRENIA, PISA, ITALY
COVER SHEET AND INDEX
COPERTINA ED ELENCO DISEGNI

SHEET REFERENCE NUMBER:
T-1

GENERAL NOTES / NOTE GENERALI

- THE INFORMATION SHOWN ON PLANS COMES FROM TOPOGRAPHIC SURVEY PERFORMED IN JANUARY 1998 UNDER ANOTHER PROJECT AND FROM DATA COLLECTED FROM EXISTING MASTER PLAN DRAININGS.
- PRIMA DI INIZIARE QUALSIASI LAVORO DI SCAVO, L'APPALTATORE DOVRA' LOCALIZZARE CON RILEVATORI LA POSIZIONE DELLA LINEA ELETTRICA INTERRATA LUNGO IL TRAGITTO DELLA NUOVA TUBAZIONE E DOVRA' PICCHETTARLA IN SUPERFICIE.
- CONTRACTOR SHALL NOT DISTURB THE SURFACE NOR THE VEGETATION OUTSIDE THE EXISTING FENCE.
- TUTTE LE SUPERFICI INTERNE DELLA STAZIONE DI SOLLEVAMENTO E DEL POZZETTO DEVONO ESSERE TRATTATE CON TRE MANI DI VERNICE A RESINA EPOSSIDICA.
- CONTRACTOR SHALL NOT DUMP ANY MATERIAL OUTSIDE THE EXISTING FENCE.
- CONTRACTOR SHALL NOT CUT ANY TREE OR SHRUB.
- CONTRACTOR SHALL SCHEDULE SO AS THERE WILL BE NO CONSTRUCTION ACTIVITY AND THE FACILITY WILL BE OPERATIONAL DURING THE BEACH SEASON FROM APRIL TO OCTOBER.
- BENCH MARK CONSISTS OF STEEL BOLT ENCASED IN EXISTING STRUCTURE AND A RED MARK ALL AROUND.
- CONTRACTOR SHALL VERIFY IN THE FIELD THE EXACT LOCATION OF THE POINTS OF CONNECTION BETWEEN NEW AND EXISTING UTILITY LINES.
- ALL ELEVATIONS ARE REFERRED TO THE BENCH MARKS. THE ELEVATIONS SHOWN ARE REFERRED TO M.S.L.
- TUTTE LE QUOTE SONO RIFERITE AI CAPOSSALI E LE QUOTE MOSTRATE SONO RIFERITE AL LIVELLO MEDIO DEL MARE.
- ALL DIMENSIONS AND ELEVATIONS ARE IN METERS UNLESS OTHERWISE INDICATED.
- PIPE DIAMETERS ARE INDICATED IN MM (ø160) OR INCHES (6").
- ALL REMOVED PAVEMENTS AND THOSE DAMAGED DURING CONSTRUCTION SHALL BE RESTORED AS EXISTING AFTER NEW WORK HAS BEEN PERFORMED.
- FOR DEMOLITION PURPOSE, THE EXISTING ASPHALT PAVEMENT CAN BE CONSIDERED 10cm THICK.
- CONTRACTOR SHALL ASSUME THAT 50% OF THE EXCAVATION ALONG THE ACCESS ROAD HAS TO BE PERFORMED BY HAND, DUE TO VICINITY OF EXISTING UNDERGROUND ELECTRIC LINE.
- WHENEVER THE NEW PIPELINE CROSSES EXISTING FENCES, CONTRACTOR SHALL DIG UNDER THE FENCE WITHOUT REMOVING IT.
- FOR DETAILS OF WATER/SANITARY SEWER INTERRELATIONSHIP SEE SHEET E-1.

LEGEND / LEGENDA

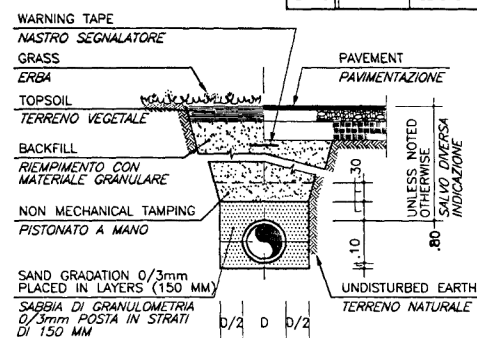
EXISTENTE	NEW	DESCRIPTION
ESISTENTE	NUOVO	BUILDING OR STRUCTURE EDIFICIO O STRUTTURA
[Symbol]	[Symbol]	ENTRY INGRESSO
[Symbol]	[Symbol]	ASPHALT PAVEMENT PAVIMENTAZIONE IN ASFALTO
[Symbol]	[Symbol]	SAND AREA SABBIA
[Symbol]	[Symbol]	GRASS AREA AREA A VERDE
[Symbol]	[Symbol]	CONCRETE PAVEMENT PAVIMENTAZIONE IN CALCESTRUZZO
[Symbol]	[Symbol]	CONCRETE CURB CORDOLO IN CALCESTRUZZO
[Symbol]	[Symbol]	CHAIN-LINK FENCE RECINZIONE A RETE METALLICA
[Symbol]	[Symbol]	DIRECTION OF FLOW DIREZIONE DI FLUSSO
[Symbol]	[Symbol]	SPOT ELEVATION QUOTA ALTIMETRICA
[Symbol]	[Symbol]	CONTOUR LINE CURVA DI LIVELLO
[Symbol]	[Symbol]	WATER LINE LINEA ACQUA
[Symbol]	[Symbol]	STORM DRAIN LINE WITH CATCH BASIN LINEA DRENAGGIO CON CACITONA
[Symbol]	[Symbol]	SANITARY SEWER LINE WITH MANHOLE LINEA FOGNATURA CON POZZETTO
[Symbol]	[Symbol]	FORCED SANITARY SEWER LINE LINEA FORZATA DI FOGNATURA
[Symbol]	[Symbol]	UNDERGROUND LOW VOLTAGE LINE LINEA ELETTRICA INTERRATA DI BASSA TENSIONE
[Symbol]	[Symbol]	LIGHTING POLE PALO ILLUMINAZIONE
[Symbol]	[Symbol]	GREASE TRAP SEPARATORE GRASSI
[Symbol]	[Symbol]	SEPTIC TANK OR IMHOFF TANK FOSSA SETTICA O VASCA IMHOFF
[Symbol]	[Symbol]	ELECTRIC MANHOLE POZZETTO ELETTRICO
[Symbol]	[Symbol]	BENCH MARK NUMBER NUMERO CAPOSSALO
[Symbol]	[Symbol]	TOP ELEVATION, INVERT ELEVATION QUOTA SUPERIORE, QUOTA SCORRIMENTO BOTTOM ELEVATION QUOTA DI FONDO
[Symbol]	[Symbol]	TREE ALBERO
[Symbol]	[Symbol]	UTILITY LINE DEMOLITION LINEA DI SERVIZIO DA DEMOLIRE
[Symbol]	[Symbol]	PAVEMENT DEMOLITION PAVIMENTO DA DEMOLIRE
[Symbol]	[Symbol]	DEMOLISH MANHOLE COMPLETELY DEMOLIRE L'INTERO POZZETTO

LIST OF ABBREVIATIONS
ELENCO ABBREVIAZIONI

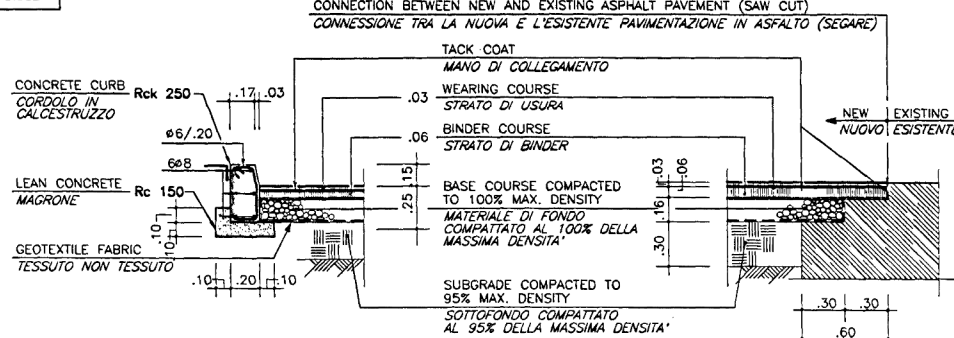
SYMBOL	ABBREVIATION	SYMBOL	ABBREVIATION	SYMBOL	ABBREVIATION
●	AT	MAX	MAXIMUM	●	MAX
○	A	MIN	MINIMUM	○	MIN
&	AND	MISC	MISCELLANEOUS	&	MISC
∅	DIAMETER	MM	MILLIMETER	∅	MM
APPROX	APPROXIMATE	N	NORTH	APPROX	N
BLDG	BUILDING	NORD	NORTH	BLDG	NORD
∅	DIA	N	NUMBER	∅	DIA
CM	CENTIMETER	NTS	NOT TO SCALE	CM	CENTIMETER
∅	DIAMETER	OD	OUTSIDE DIAMETER	∅	DIAMETER
DWG	DRAWING	OH	OVERHEAD	DWG	DRAWING
E	EAST	R	RADIUS	E	EAST
EA	EACH	S	SOUTH	EA	EACH
EL	ELEVATION	SQ	SQUARE	EL	ELEVATION
EXIST	EXISTING	TYP	TYPICAL	EXIST	EXISTING
F.F.E.L.	FINISHED FLOOR ELEVATION	W	WEST	F.F.E.L.	FINISHED FLOOR ELEVATION
ID	INSIDE DIAMETER	W/	WITH	ID	INSIDE DIAMETER
M	METER	W/O	WITHOUT	M	METER

BENCH MARK SCHEDULE
TABELLA CAPOSSALI

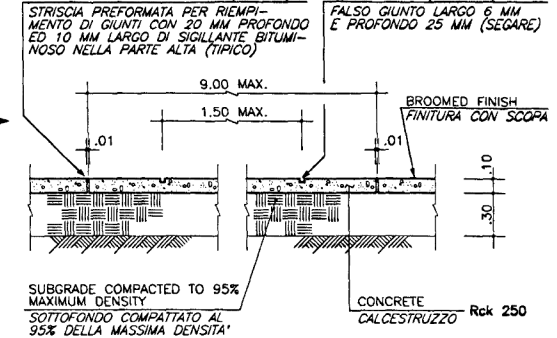
B M	N	E	ELEVATION
BM A	60.591	391.654	2.215
BM B	69.438	165.575	2.591
BM C	140.973	82.573	3.982



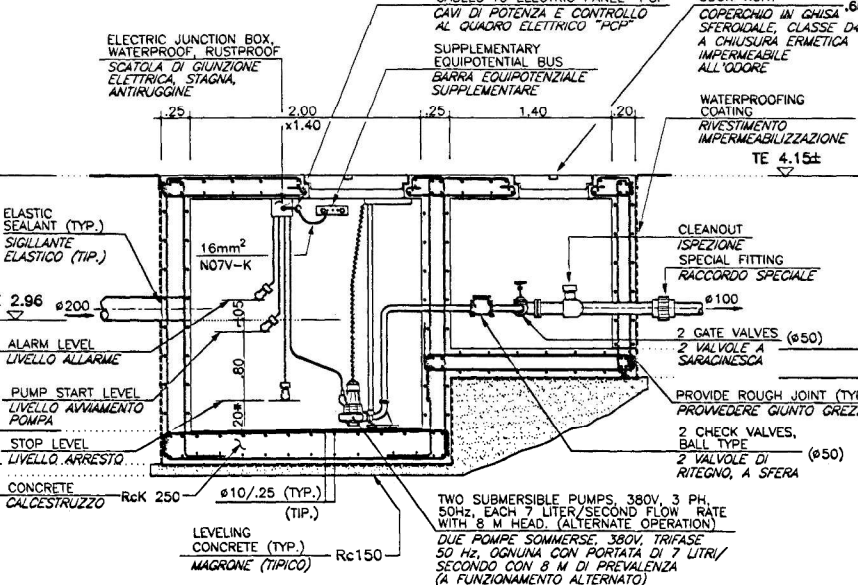
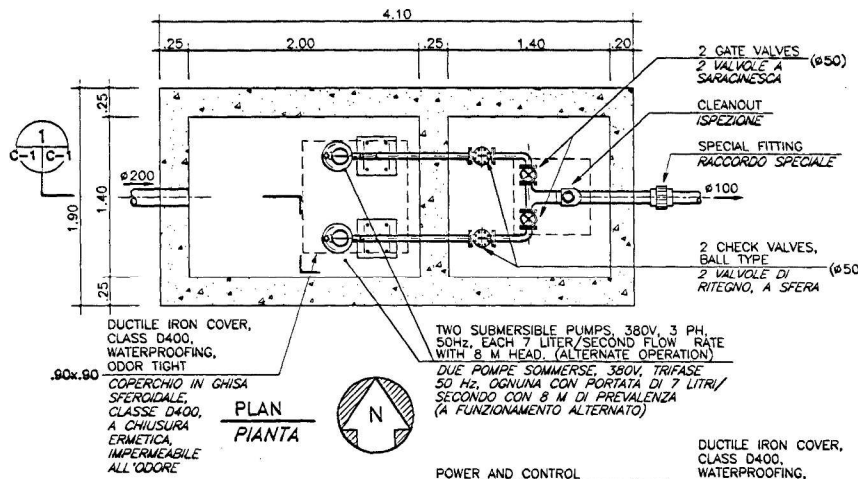
(C) TYPICAL PIPE BEDDING NOT TO SCALE
ALLETAMENTO TIPICO NON IN SCALA



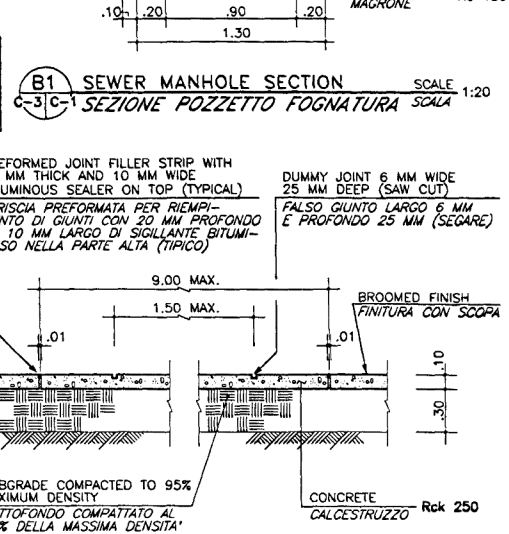
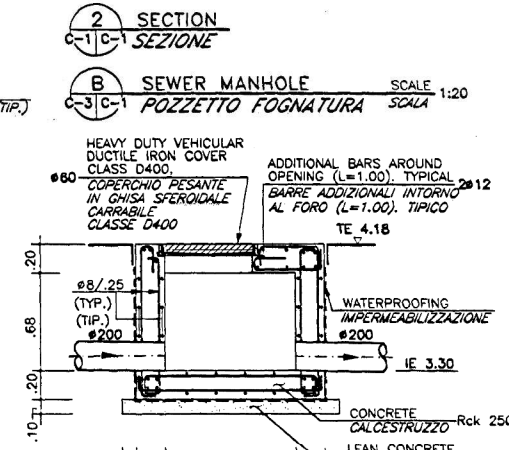
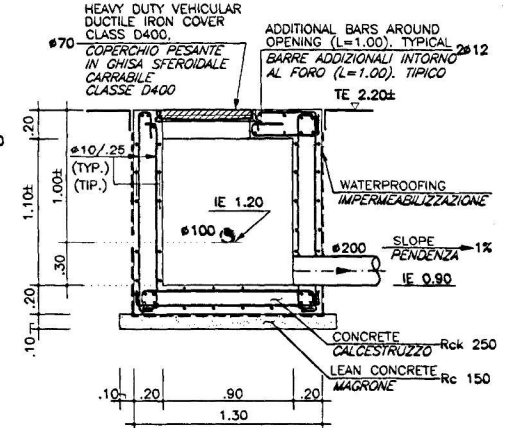
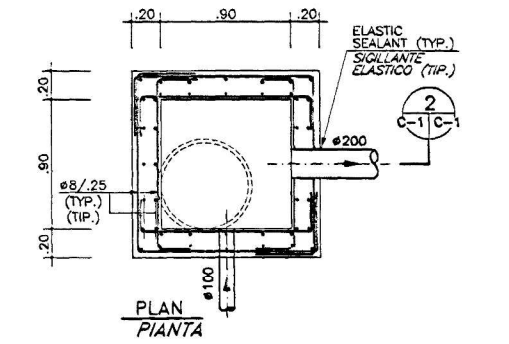
(D) ASPHALT PAVEMENT AND CURB DETAIL SCALE 1:20
PART. PAVIMENTO IN ASFALTO F. CORDOLO



(F) TYPICAL SIDEWALK DETAIL SCALE 1:20
PARTICOLARE TIPICO MARCIAPIEDE



(1) SECTION SCALE 1:25
(A) LIFT STATION DETAILS SCALE 1:25
(1) SECTION SCALE 1:25
(A) LIFT STATION DETAILS SCALE 1:25



(B) SEWER MANHOLE SCALE 1:20
(B1) SEWER MANHOLE SECTION SCALE 1:20

DATE: 14 JUNE 1999
SUBMITTED BY: [Signature]
DESIGNED BY: FAP
DRAWN BY: MAS
CHECKED BY: PF
FILE NO.: 832-10-015

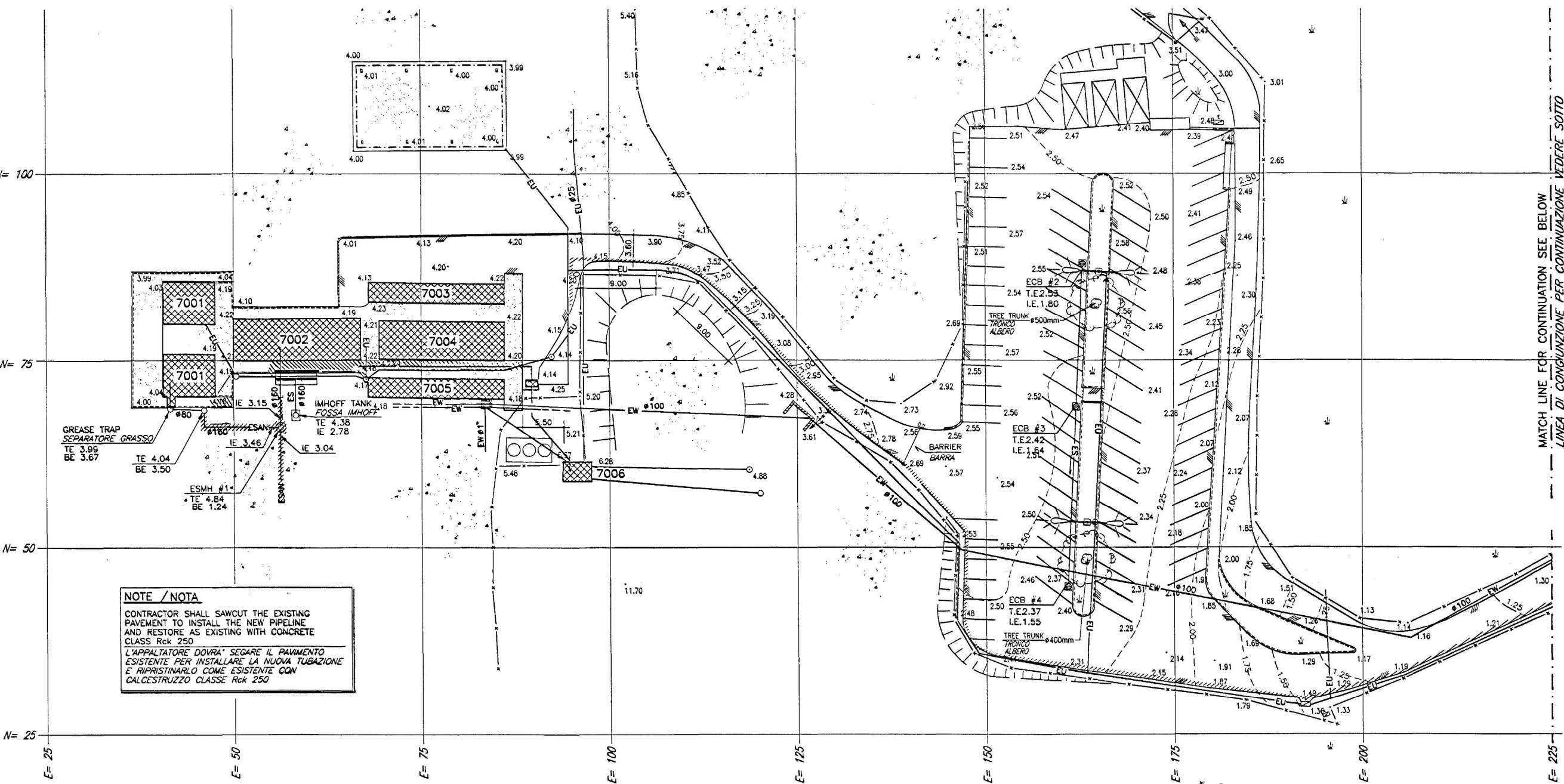
OXG THE OX DESIGN GROUP
3000 W. 10TH AVE., SUITE 200
DENVER, CO 80202 USA

U.S. ARMY CORPS OF ENGINEERS
EUROPE DISTRICT
APO AE 09096

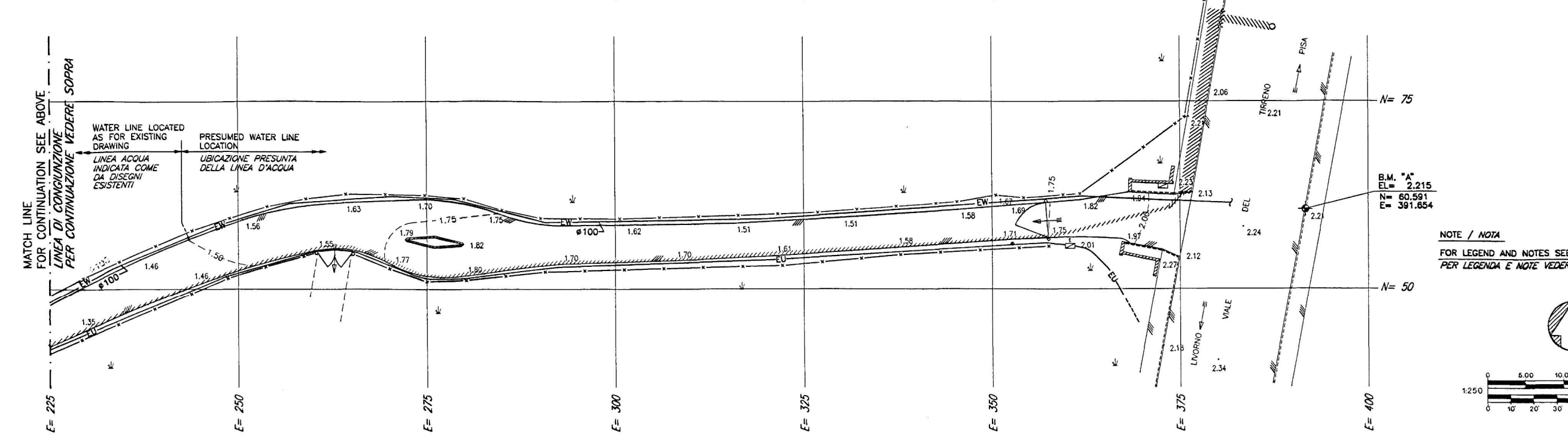
EJ0690002 - CONNECT BEACH FACILITY TO CITY SEWER
TIRRENIA, PISA, ITALY

NOTES, LEGENDA AND DETAILS
NOTE, LEGENDA E PARTICOLARI

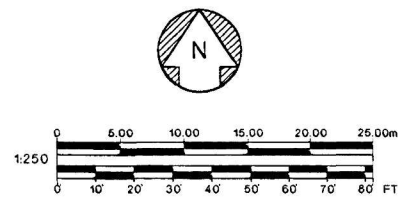
SHEET REFERENCE NUMBER:



NOTE / NOTA
 CONTRACTOR SHALL SAWCUT THE EXISTING PAVEMENT TO INSTALL THE NEW PIPELINE AND RESTORE AS EXISTING WITH CONCRETE CLASS Rck 250
 L'APPALTATORE DOVRA' SEGARE IL PAVIMENTO ESISTENTE PER INSTALLARE LA NUOVA TUBAZIONE E RIPRISTINARLO COME ESISTENTE CON CALCESTRUZZO CLASSE Rck 250



NOTE / NOTA
 FOR LEGEND AND NOTES SEE SHEET C-1
 PER LEGENDA E NOTE VEDERE TAVOLA C-1



MATCH LINE FOR CONTINUATION SEE BELOW
 LINEA DI CONGIUNZIONE PER CONTINUAZIONE VEDERE SOTTO

SYMBOL	DESCRIPTION	DATE APPROVED

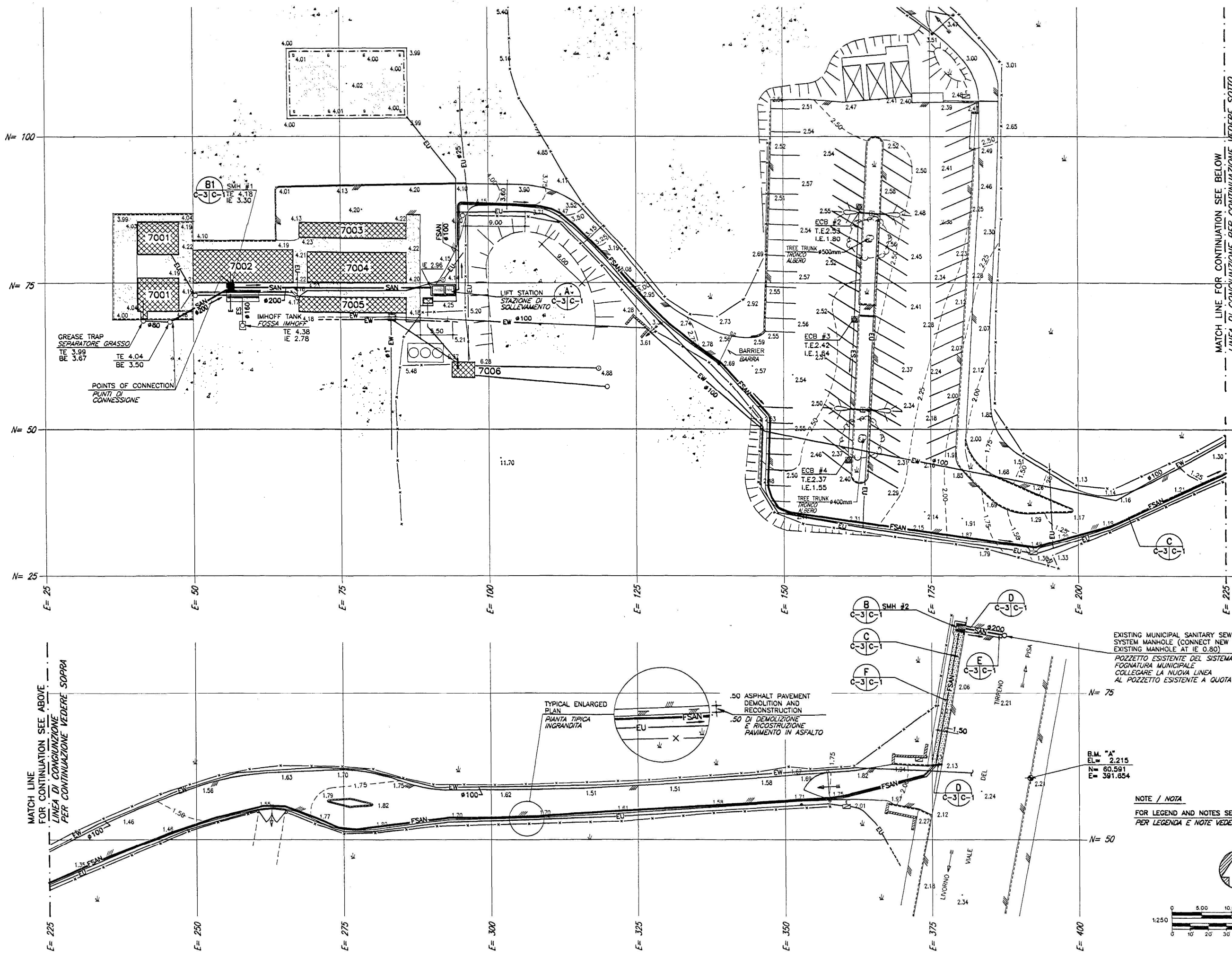
DESIGNED BY: FAP
DATE: 14 JUNE 1999
DWN BY: KAS
SUBMITTED BY: [Signature]
CHK BY: PF
FILE NO.: 832-10-015

THE OK DESIGN GROUP
 ROME ITALY
 tel 39-6-868407 / 868474

U.S. ARMY CORPS OF ENGINEERS
 EUROPE DISTRICT
 APO AE 09098

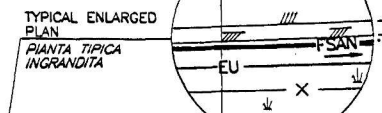
EJ0690S002 - CONNECT BEACH FACILITY TO CITY SEWER
 TIRRENA, PISA, ITALY
EXISTING CONDITIONS AND DEMOLITIONS PLAN
PIANTA CONDIZIONI ESISTENTI E DEMOLIZIONI

SHEET REFERENCE NUMBER:
C-2



MATCH LINE FOR CONTINUATION SEE BELOW
LINEA DI CONGIUNZIONE PER CONTINUAZIONE VEDERE SOTTO

MATCH LINE FOR CONTINUATION SEE ABOVE
LINEA DI CONGIUNZIONE PER CONTINUAZIONE VEDERE SOPRA

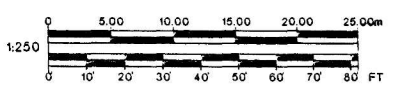


.50 ASPHALT PAVEMENT
DEMOLITION AND
RECONSTRUCTION
.50 DI DEMOLIZIONE
E RICOSTRUZIONE
PAVIMENTO IN ASFALTO

EXISTING MUNICIPAL SANITARY SEWER
SYSTEM MANHOLE (CONNECT NEW LINE TO
EXISTING MANHOLE AT IE 0.80)
POZZETTO ESISTENTE DEL SISTEMA DI
FOGNATURA MUNICIPALE
COLLEGARE LA NUOVA LINEA
AL POZZETTO ESISTENTE A QUOTA IE 0.80)

B.M. "A"
EL= 2.215
N= 60.591
E= 391.654

NOTE / NOTA
FOR LEGEND AND NOTES SEE SHEET
PER LEGENDA E NOTE VEDERE TAVOLA C-1



DATE	14 JUNE 1999
DESIGNED BY	FAP
DWN BY	KAS
CHK BY	PF
FILE NO.	832-10-015
SYMBOL	
DESCRIPTION	
DATE APPROVED	

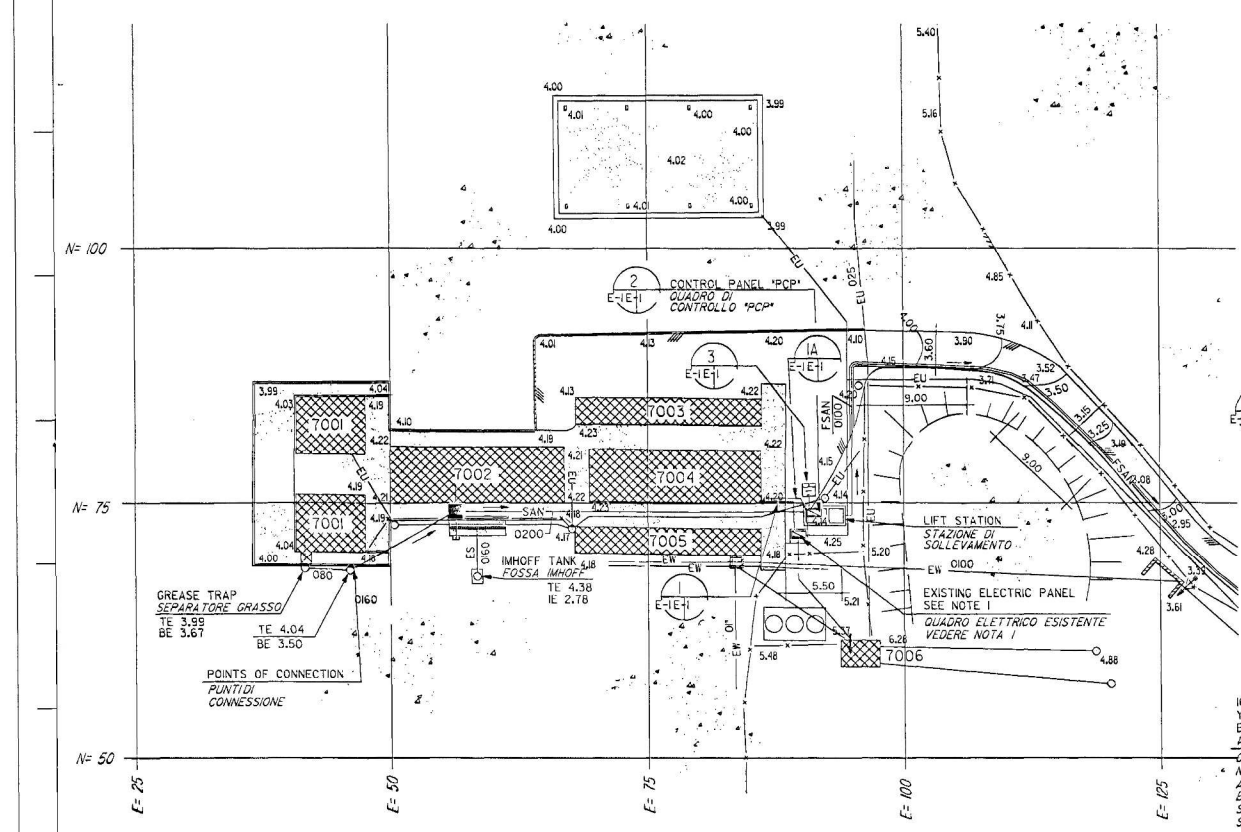
THE OK DESIGN GROUP
 ROME ITALY
 tel. 39-6-669497 / 669474

U.S. ARMY CORPS OF ENGINEERS
 EUROPE DISTRICT
 APO AE 09098

EJ0690S002 - CONNECT BEACH FACILITY TO CITY SEWER
 TIRRENIA, PISA, ITALY
NEW CONDITIONS PLAN
 PIANTA NUOVE CONDIZIONI

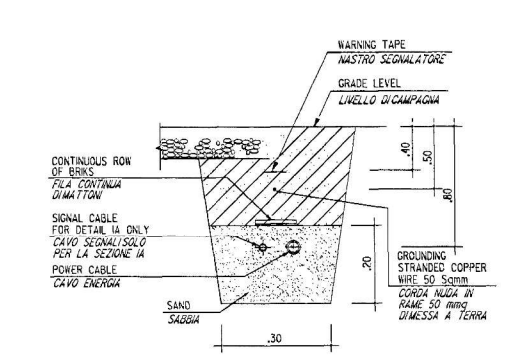
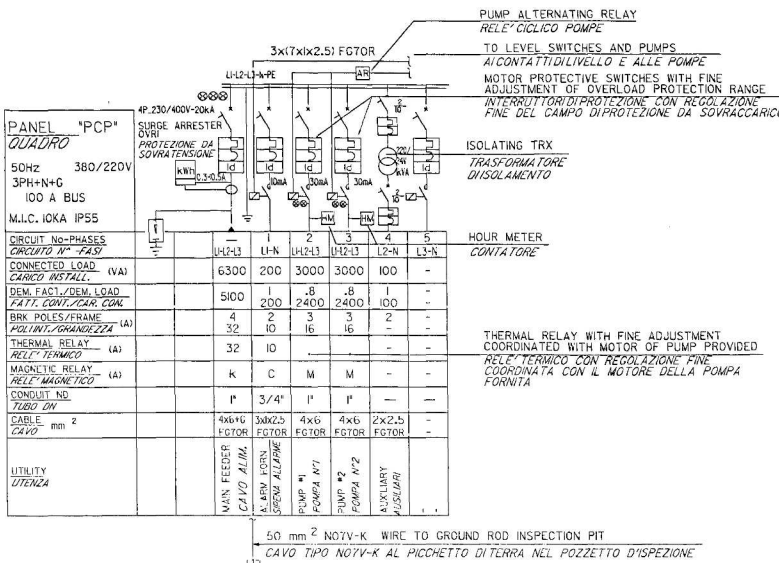
SHEET
 REFERENCE
 NUMBER:
C-3

DE
DE
BUI
ENT
NG
ASP
P
SAN
SAC
GRA
ARE
CON
P
CON
COR
CON
COR
DIRE
COR
SPO
DUC
CON
COR
WATE
LINE
STOR
LINE
FLOAT
SWITCHES
SANITARY
PUMP
LEVEL
RISE
LINE
PUMP
OPERATING
PUMP
SHALL
STOP
FOR
LAG
PUMP
WILL
LINE
REACHES
THE
LINE
AND
SIGNAL
SHALL
BE
ACTIVATED
5
FROM
THE
SURF
LIGNO
ESSERE
USA
PALLI
LINO
PER
A
GREAT
L'ALLARME
AL
SEMA
POMPA
IN
FUNZ
TERRITTORE
PIU
SEPT
LA
POMPA
DE
FOSSE
MANTEN
SUCCE
LIVELLO
RAGGIUN
ASSIEME
SIENRIZI
L'ASIA
RAGIONE
LA
ESSERE
SEGNAL
REGOLABIL
DAL
FRONTE
TOP
BOTT
CANT
CANT
TREE
ALB
UTILI
LINE
PAVE
PAVA
DEM
DEM
B
F
NCE
CARIO
BM
BM
BM
ED
A
D
D/2
DDING
TRICO

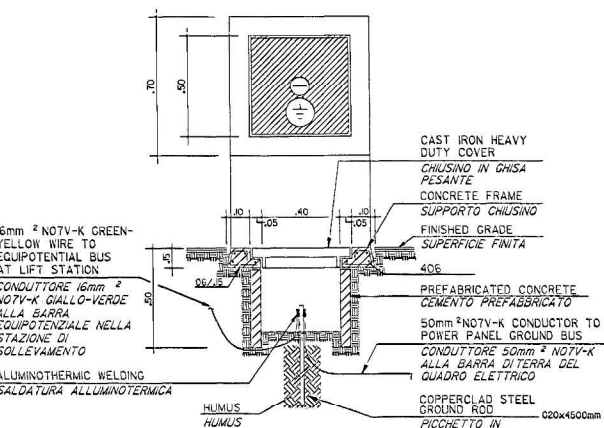


ELECTRICAL NOTES
NOTE ELETTRICHE

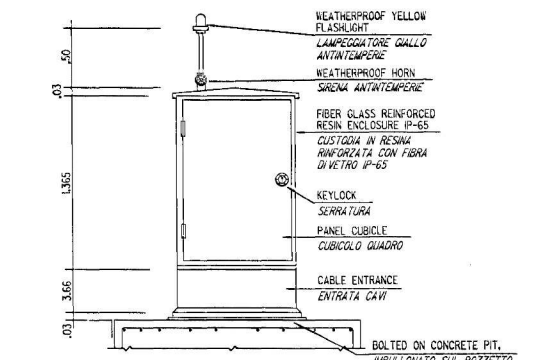
PROVIDE IN THE EXISTING ELECTRIC PANEL A NEW 4P-32A CIRCUIT BREAKER WITH PROPER INTERRUPTING CAPACITY. PROVIDE FEEDER CABLES AND CONDUITS UP TO NEW FLOOR MOUNTED PUMP CONTROL PANEL.
PROVVEDERE NEL QUADRO ELETTRICO ESISTENTE UN INTERRUPTORE AUTOMATICO 4P-32A CON POTERE D'INTERRUZIONE ADEGUATO. PROVVEDERE CAVO D'ALIMENTAZIONE E TUBAZIONI FINO AL QUADRO DI CONTROLLO POMPE.



1 UNDERGROUND CABLE DETAIL
PARTICOLARE CAVO INTERRATO



3 GROUND ROD INSPECTION PIT DETAIL
PARTICOLARE DISPENSORE CON POZZETTO

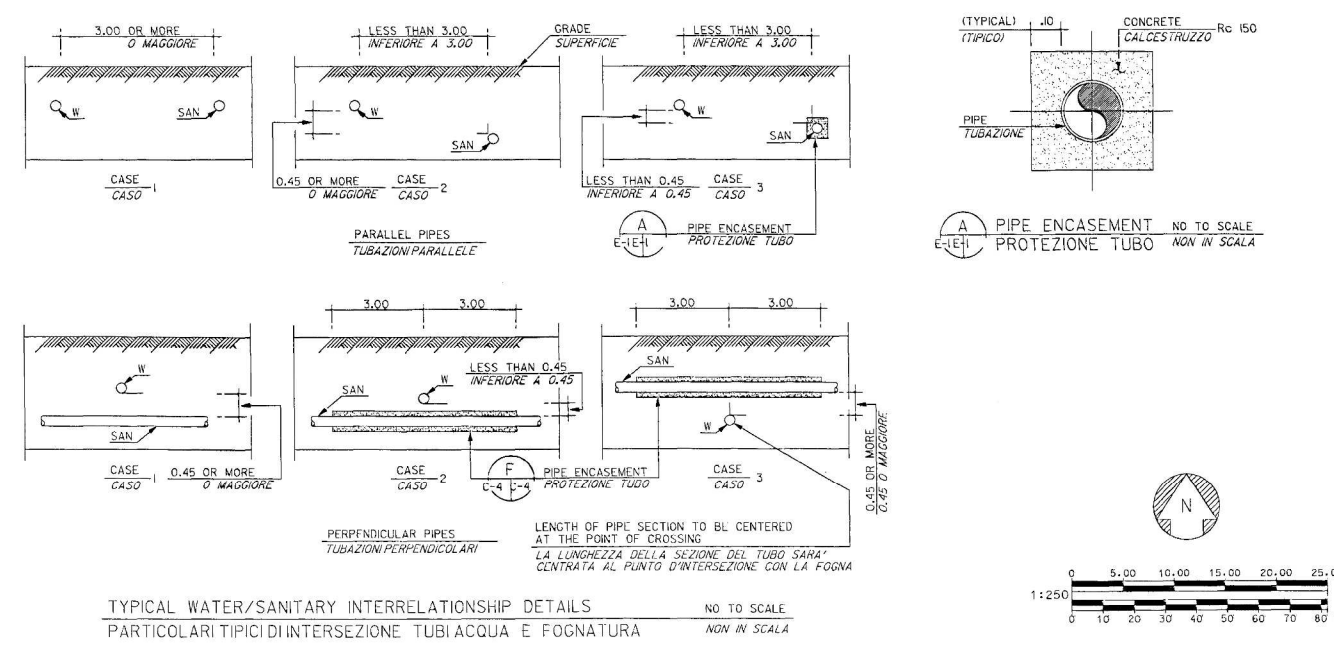


2 TYPICAL PCP ENCLOSURE DETAIL
PARTICOLARE TIPICO CUSTODIA PCP

CONTROL DESCRIPTION
DESCRIZIONE CONTROLLI

THREE FLOAT SWITCHES SHALL BE USED TO CONTROL SUMP LEVEL. ONE FOR PUMP TURN-ON, ONE FOR PUMP TURN-OFF, AND ONE FOR THE HIGH WATER ALARM. WHEN SUMP LEVEL RISES UPPER LEVEL SWITCH SHALL ENERGIZE AND START PUMP. WITH PUMP OPERATING, SUMP LEVEL LOWERS TO LOW SWITCH TURN-OFF SETTING AND PUMP SHALL STOP. ALTERNATING RELAY SHALL INDEX ON STOPPING OF PUMP SO THAT LAG PUMP WILL START ON NEXT OPERATION. IF LEVEL REACHES THE HIGH WATER ALARM LEVEL, ALARM SWITCH SHALL ENERGIZE AND SIGNAL THE ALARM. IF ONE PUMP SHOULD FAIL FOR ANY REASON, THE SECOND PUMP SHALL OPERATE ON THE OVERLOAD CONTROL AND THE ALARM SHALL BE ACTIVATED. ALL LEVEL SWITCHES SHALL BE ADJUSTABLE FOR LEVEL SETTING FROM THE SURFACE.

DOVRANNO ESSERE USATI TRE INTERRUTTORI A GALLEGGIANTE PER CONTROLLARE IL LIVELLO. UNO PER AVVIARE UNA POMPA, UNO PER ARRESTARE LA POMPA ED UNO PER L'ALLARME ALTO LIVELLO ACQUA. AL SALIRE DEL LIVELLO L'INTERRUTTORE PIU' ALTO SI ENERGIZZA ED AVVIA LA POMPA. CON LA POMPA IN FUNZIONE, IL LIVELLO DELL'ACQUA DEVE SCENDERE AL LIVELLO DELL'INTERRUTTORE PIU' BASSO E LA POMPA SI ARRESTA. IL RELE CICLICO PONE SU STOP LA POMPA COSICCHE' LA POMPA GREGARIA SARA' AVVIATA NEL FUNZIONAMENTO SUCCESSIVO. SE IL LIVELLO RAGGIUNGE IL LIVELLO ALTO DI ALLARME, L'INTERRUTTORE DI ALLARME SI ENERGIZZA E SEGNA LA L'ALLARME. SE UNA POMPA SI QUASTA PER QUALSIASI RAGIONE, LA SECONDA POMPA DEVE AVVIARSI COL CONTROLLO SUPERIORE E DEVE ESSERE SEGNALATO L'ALLARME. TUTTI GLI INTERRUTTORI DI LIVELLO DEVONO ESSERE REGOLABILI DAL FRONTE.



TYPICAL WATER/SANITARY INTERRELATIONSHIP DETAILS
PARTICOLARI TIPICI DI INTERSEZIONE TUBI ACQUA E FOGNATURA

DATE: 14 JUNE 1999	DESIGNED BY: LUC	THE DC DESIGN GROUP ROME, ITALY Tel 06 5904077 Fax 06 5904078	DATE IMPRINTED
SUBMITTED BY:	DRW. BY: IVA	U.S. ARMY CORPS OF ENGINEERS EUROPE DISTRICT APO AE 09095	DESCRIPTION
FILE NO.: 832-10-015	CHK. BY: CR	PROJECT NO. 832-10-015	SYMBOL

EJ06905002 - CONNECT BEACH FACILITY TO CITY SEWER
TERRENA, PISA, ITALY
ELECTRICAL INSTALLATIONS
IMPIANTIELETTICI

SHEET REFERENCE NUMBER:
E-1