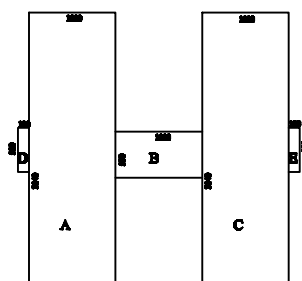
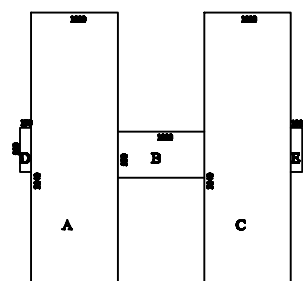


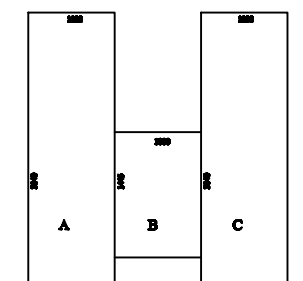
CALCOLO VOLUME



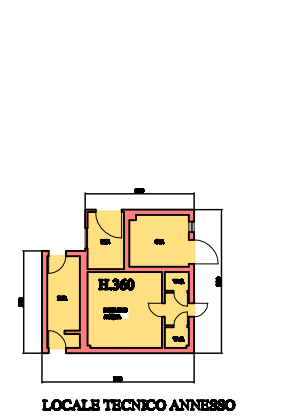
PIANO SECONDO
 A = (31,40x10) x 3,40 = 1067,60 mc
 B = (5,30x10) x 3,40 = 180,20 mc
 C = (31,40x10) x 3,40 = 1067,60 mc
 D = (5,10x1,30) x 3,40 = 22,542 mc
 E = (5,10x1,30) x 3,40 = 22,542 mc
TOT. = 2360,484 mc



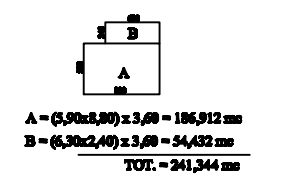
PIANO PRIMO
 A = (31,40x10) x 3,40 = 1067,60 mc
 B = (5,30x10) x 3,40 = 180,20 mc
 C = (31,40x10) x 3,40 = 1067,60 mc
 D = (5,10x1,30) x 3,40 = 22,542 mc
 E = (5,10x1,30) x 3,40 = 22,542 mc
TOT. = 2360,484 mc



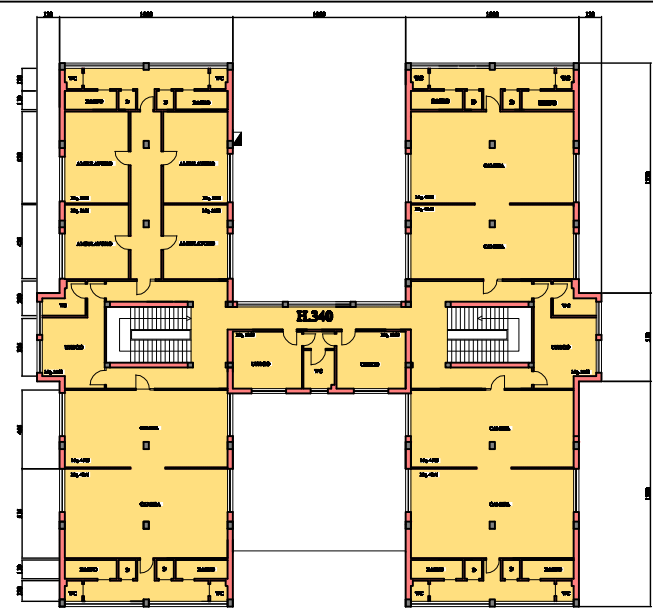
PIANO TERRA
 A = (31,40x10) x 3,50 = 1099,00 mc
 B = (1,45x10) x 3,50 = 505,75 mc
 C = (31,40x10) x 3,50 = 1099,00 mc
TOT. = 2703,75 mc



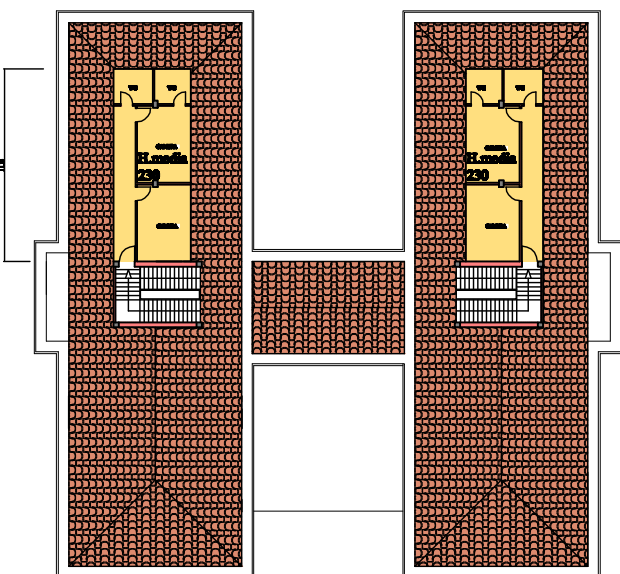
PIANO MANBARDA
 A = (15,50x3,00) x 2,30 = 178,25 mc
 B = (15,50x3,00) x 2,30 = 178,25 mc
TOT. = 356,500 mc



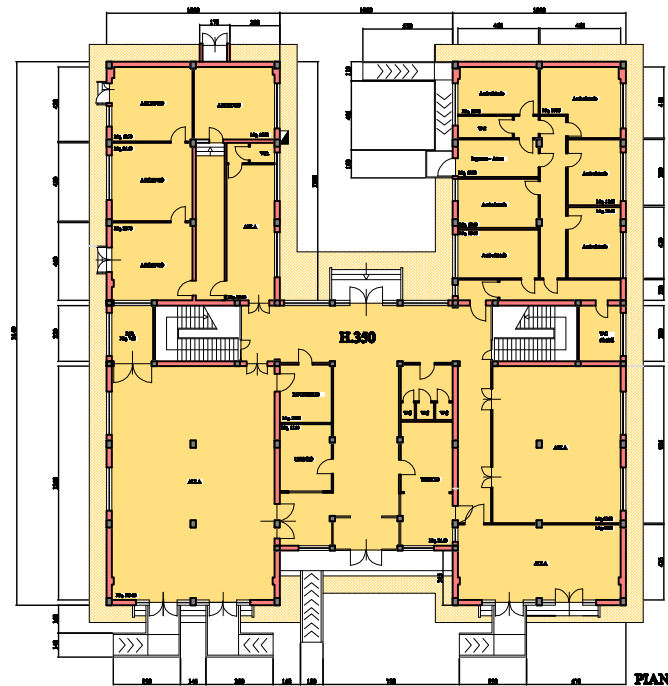
PIANO SEMINTERRATO
 A = (5,00x3,00) x 0,70 = 17,500 mc



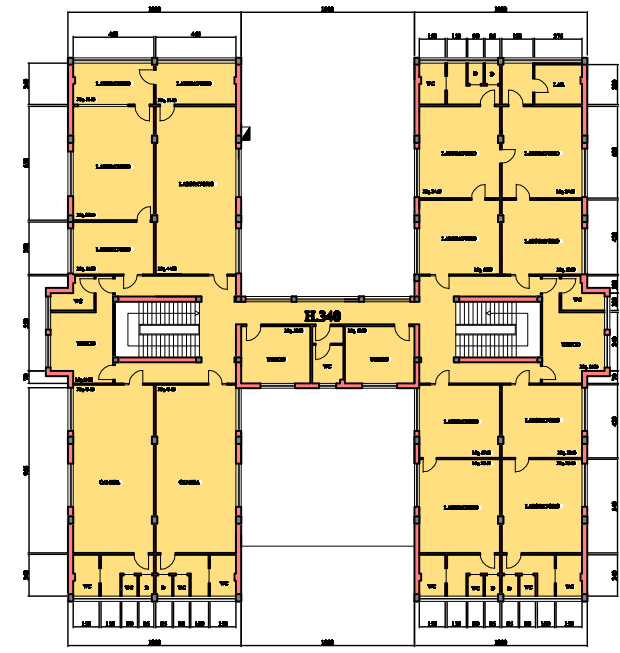
PIANTA PIANO SECONDO



PIANTA PIANO MANBARDA



PIANTA PIANO TERRINO



PIANTA PIANO PRIMO

TABELLA RIEPILOGATIVA

Volume piano ammobiliato	= 17,500 mc
Volume piano terra	= 2703,750 mc
Volume piano primo	= 2360,484 mc
Volume piano secondo	= 2360,484 mc
Volume loc. tecnico annesso	= 241,344 mc

TOT. = 8040,062 mc

COMUNE DI PISA
PIANO DI RECUPERO
EX COLONIA "STELLA MARIS" CALABRONNE

PROFONDI:
EDIMASON S.R.L.
G.D.S. S.A.S. DI CONTICHI GIUSEPPE E C.

TAV. N. 3
PIANTE - STATO ATTUALE
SCALA 1:800

PROGETTO:
ING. FRANCESCO BARRICHI
ING. TOMMASO TOSINI

GENNAIO 2006