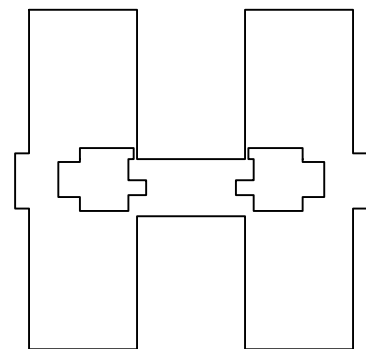
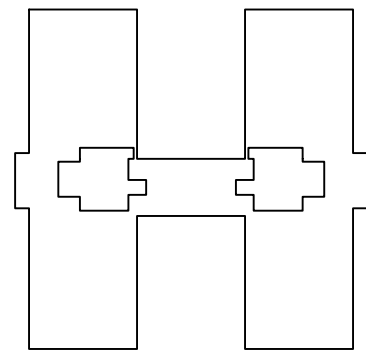




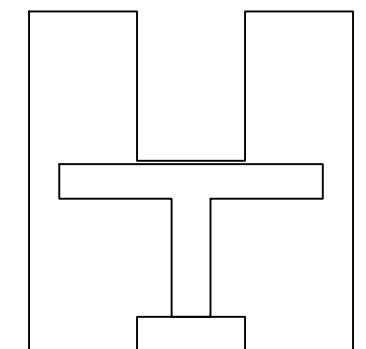
PIANO MANSARDA
 SLU 49.62 + 49.62 = 99.24 MQ



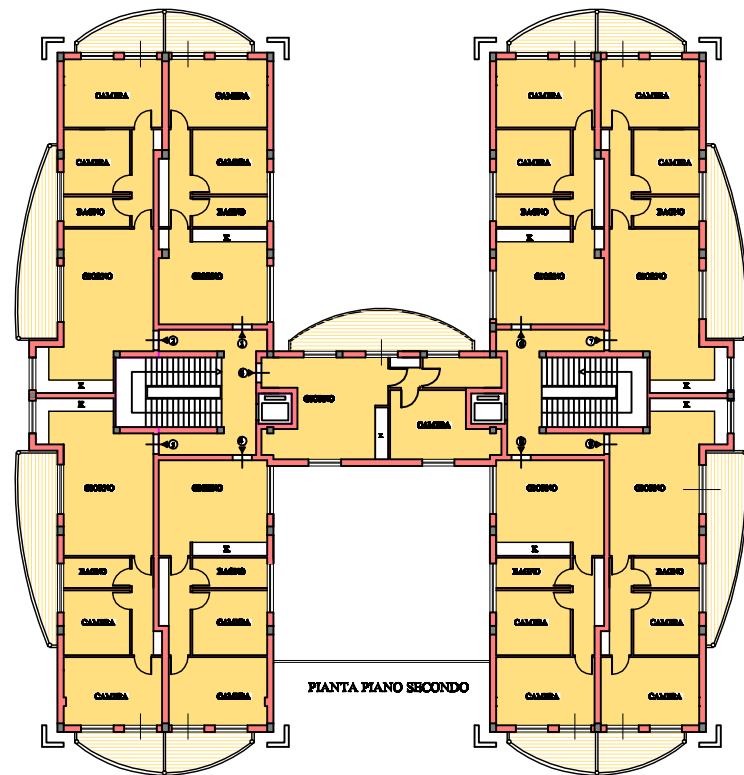
PIANO SECONDO
 SLU 676.62 - 676.62 = 676.62 MQ



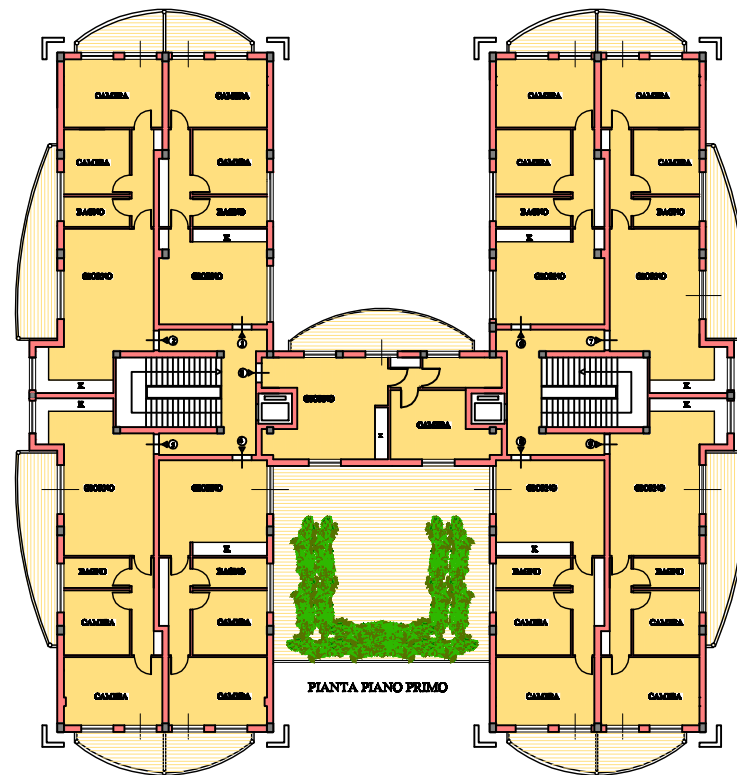
PIANO PRIMO
 SLU 676.62 - 676.62 = 676.62 MQ



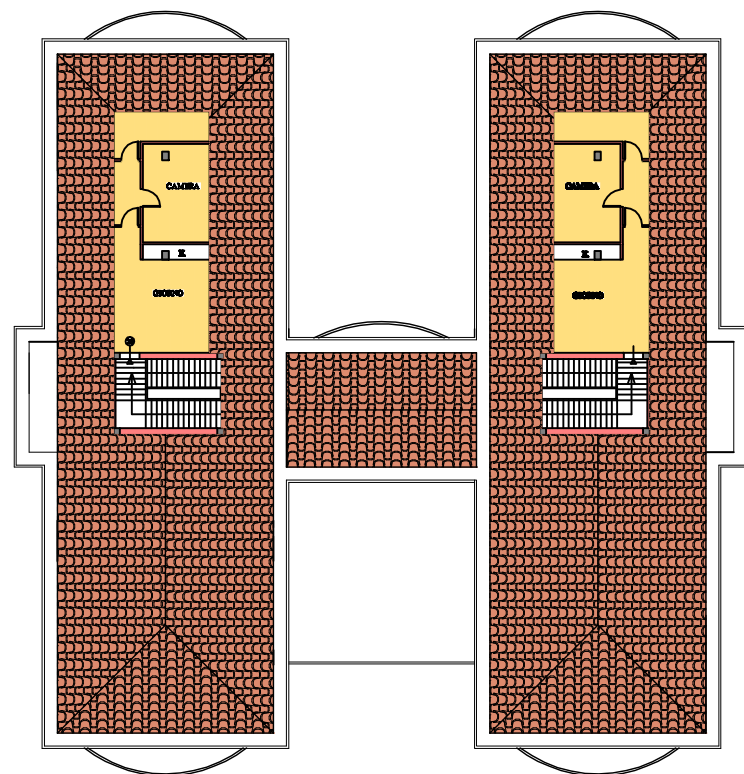
PIANO TERRA
 SLU 772.58 - 117.58 = 655.00 MQ



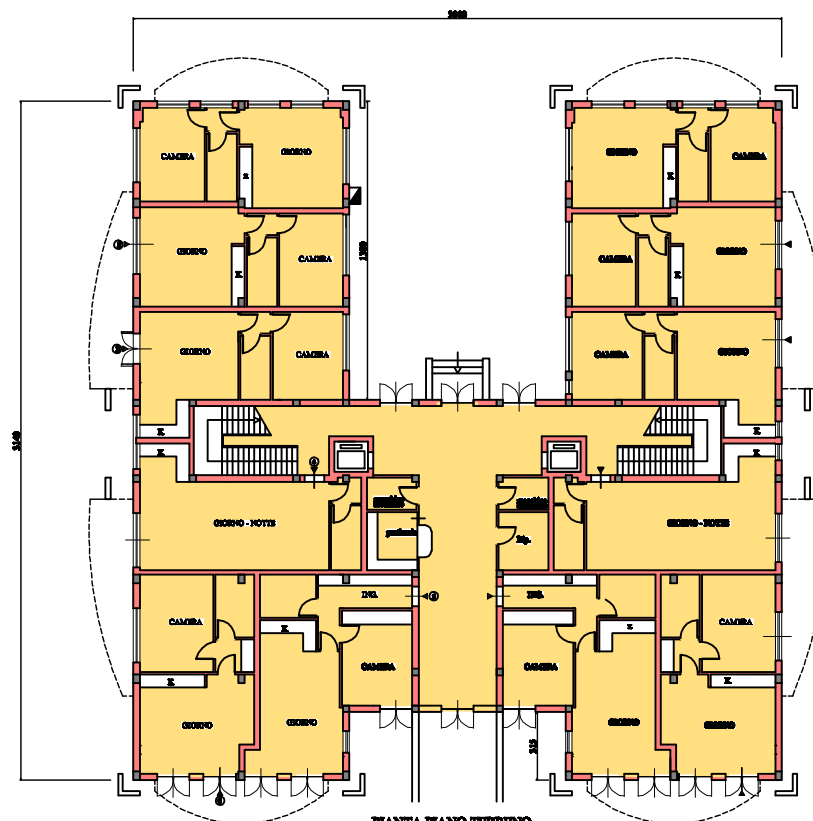
PIANTA PIANO SECONDO



PIANTA PIANO PRIMO



PIANTA PIANO MANSARDA



PIANTA PIANO TERRENO

TOT. SLU 655.00 + 676.62 + 676.62 + 99.24 = 2107.48 MQ

COMUNE DI FISA
PIANO DI RECUPERO
EX COLONIA "STELLA MARIS" CALAMBRONE

PROPRIETÀ:
EDILMASONI S.R.L.
G.D.S. S.A.S. DI CONTIGINI GIUSEPPE E C.

TAV. N. 7
PIANTE - STATO DI PROGETTO
SCALA 1:200

PROGETTO:
ING. FRANCESCO BARNICIN
ING. TOMMASO TORRI

GENNAIO 2006