

MOBILITY ATLAS

PISA MOBILITÀ

KDDLab – ISTI – CNR, Pisa

Chi Siamo

- Knowledge Discovery and Delivery Laboratory
 - ▣ Laboratorio congiunto:
 - ISTI-CNR
 - Dipartimento di Informatica
 - ▣ Responsabile: Fosca Giannotti
- <http://kdd.isti.cnr.it>
- giannotti@isti.cnr.it
- rinzivillo@isti.cnr.it



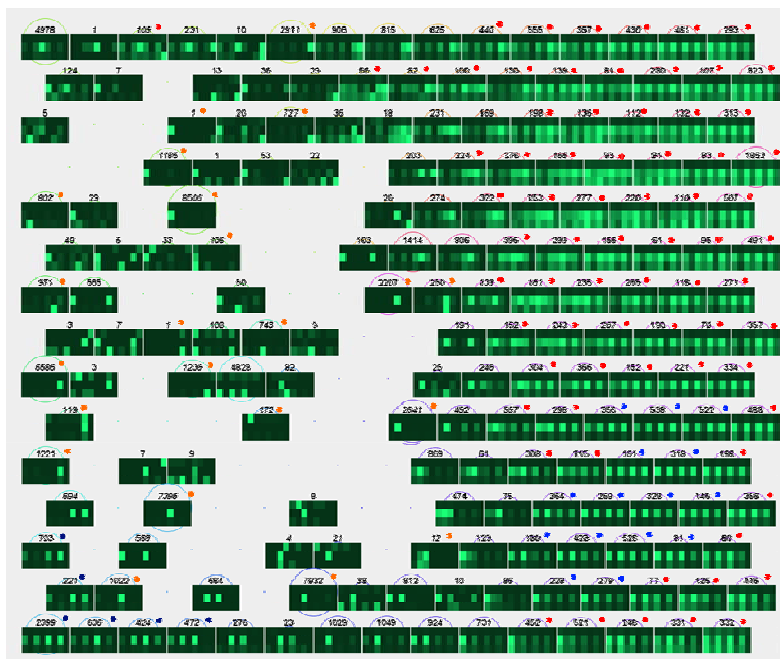
Esperti di analisi di dati di Mobilità

□ **Progetto Pisa Mobilità**

- Analisi conoscitiva della mobilità nell'area dei 6 Comuni
- Definizione di indicatori di mobilità per abilitare un **Osservatorio Permanente della Mobilità**



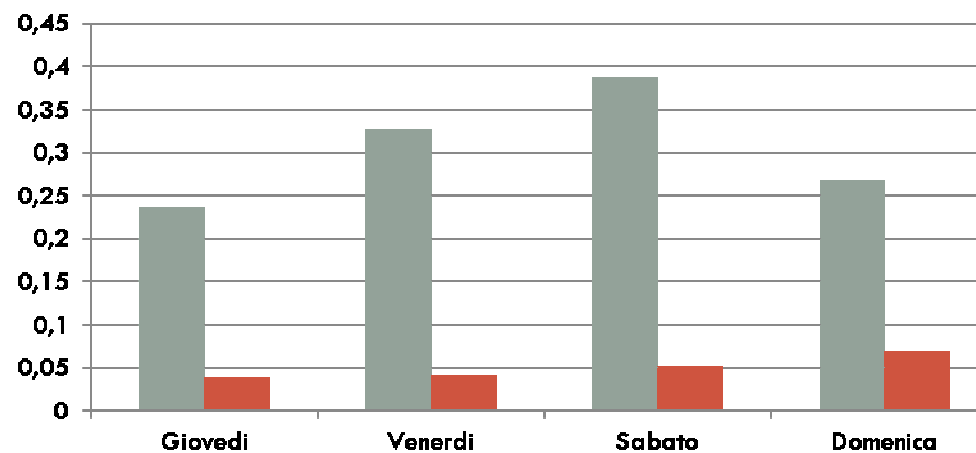
GSM – Osservatorio Turismo Pisa



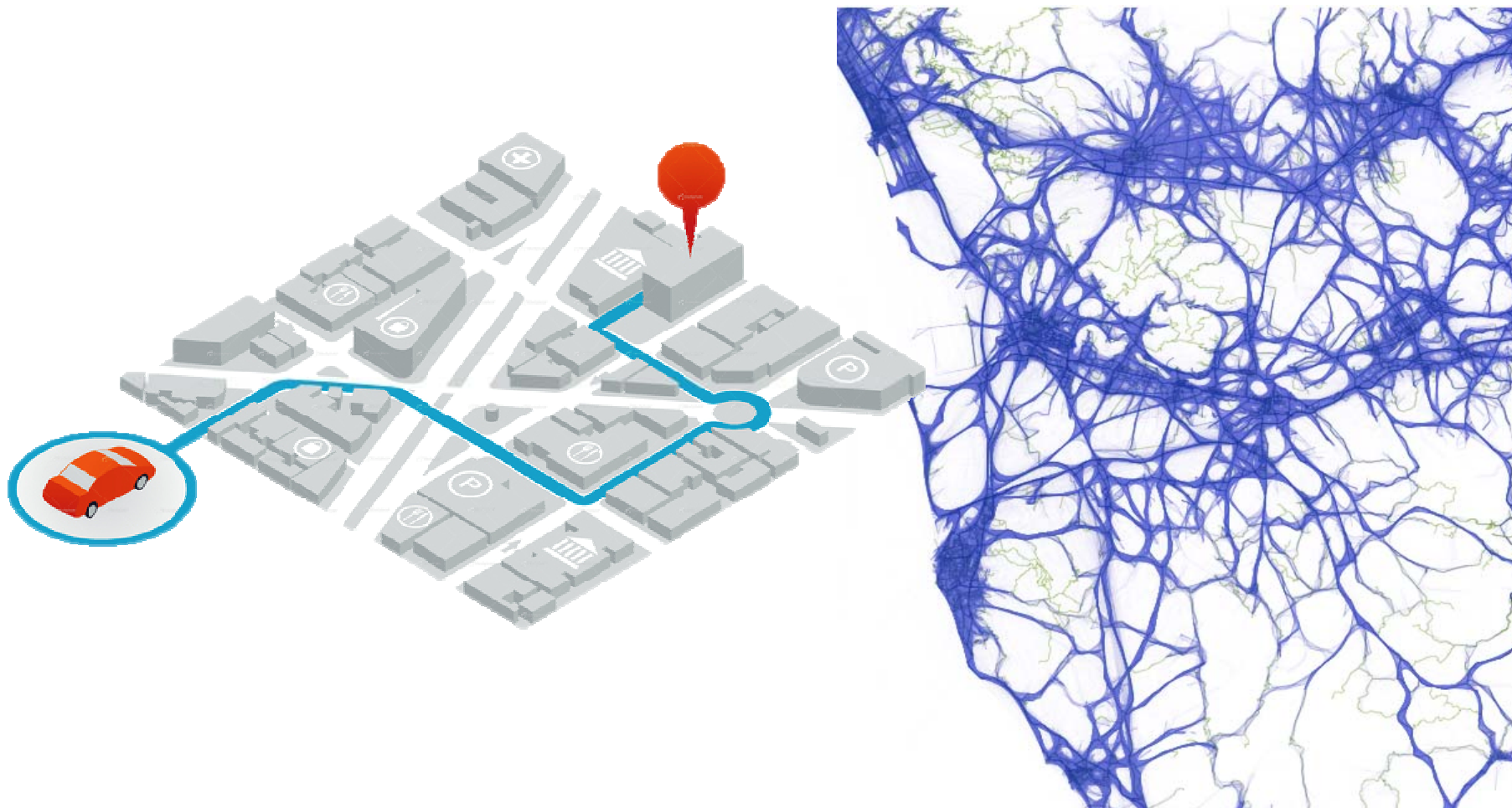
- Profilo residenti
- Profili pendolari
- Profili visitatori

Presenze Visitatori GSM - Lucca Comics 2012

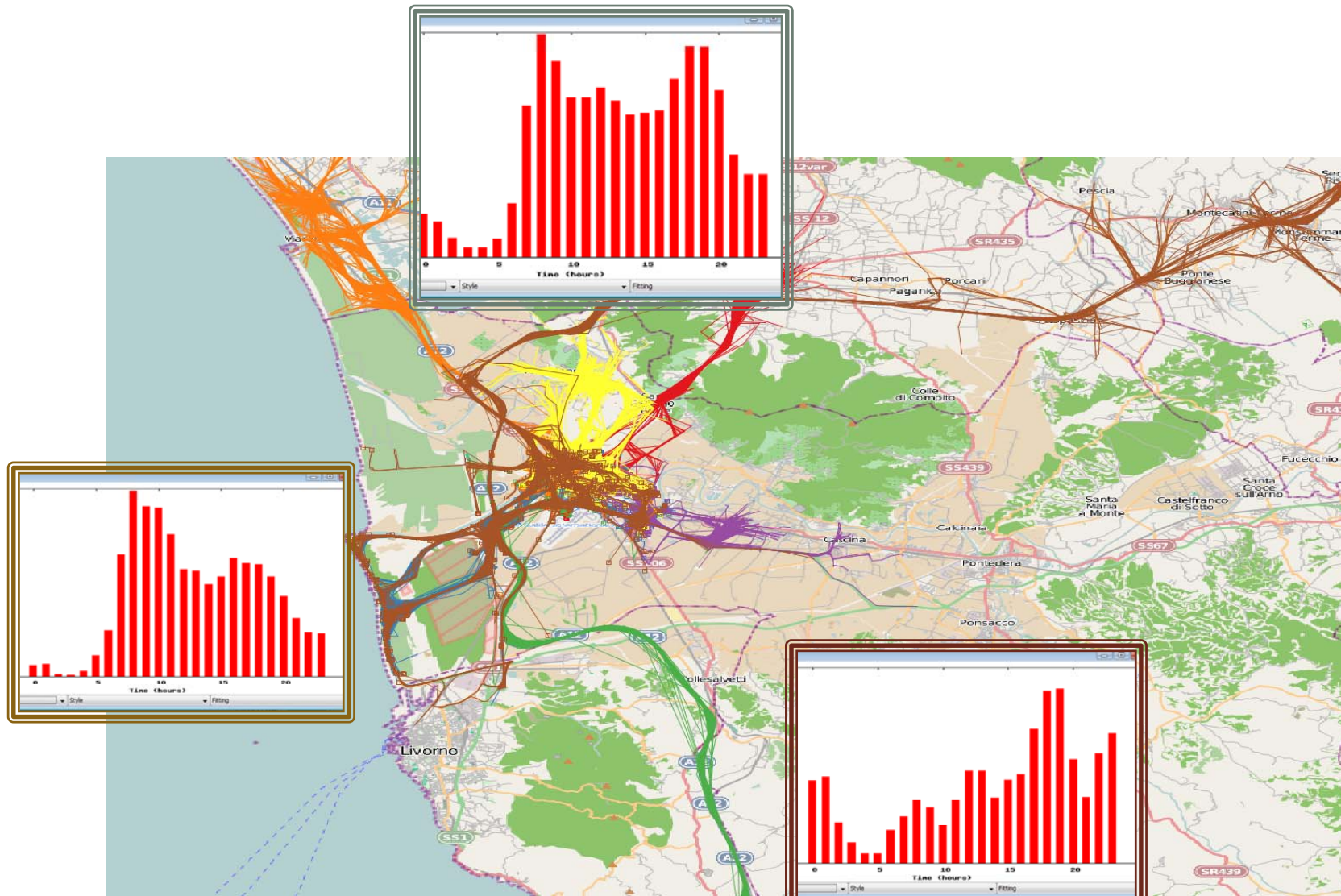
■ Presenze Comics 2012 ■ Presenza media settimanale



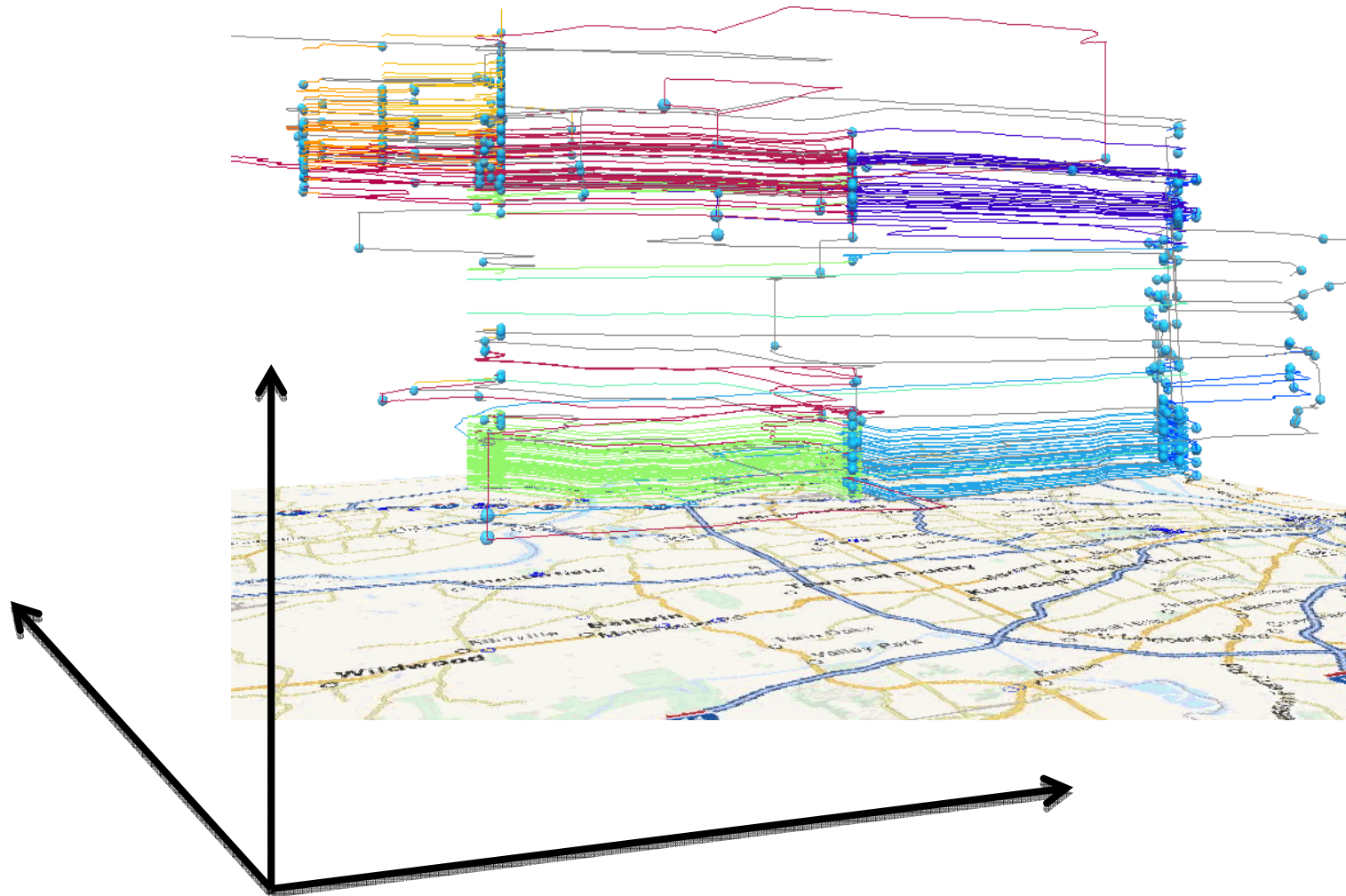
Focus su GPS



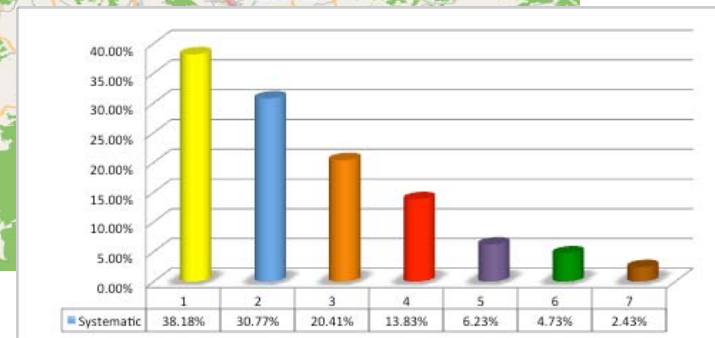
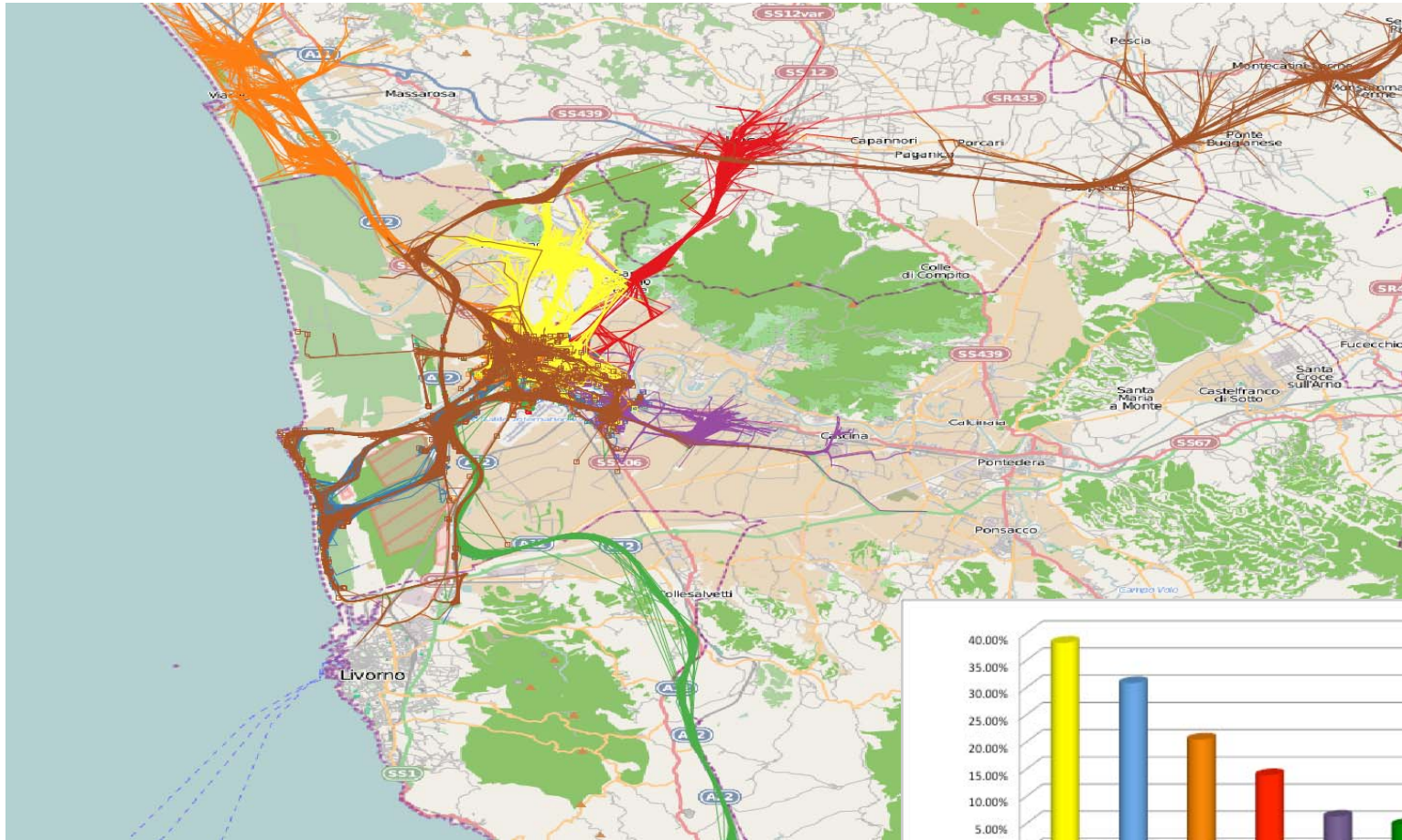
Percorsi di Accesso alla città



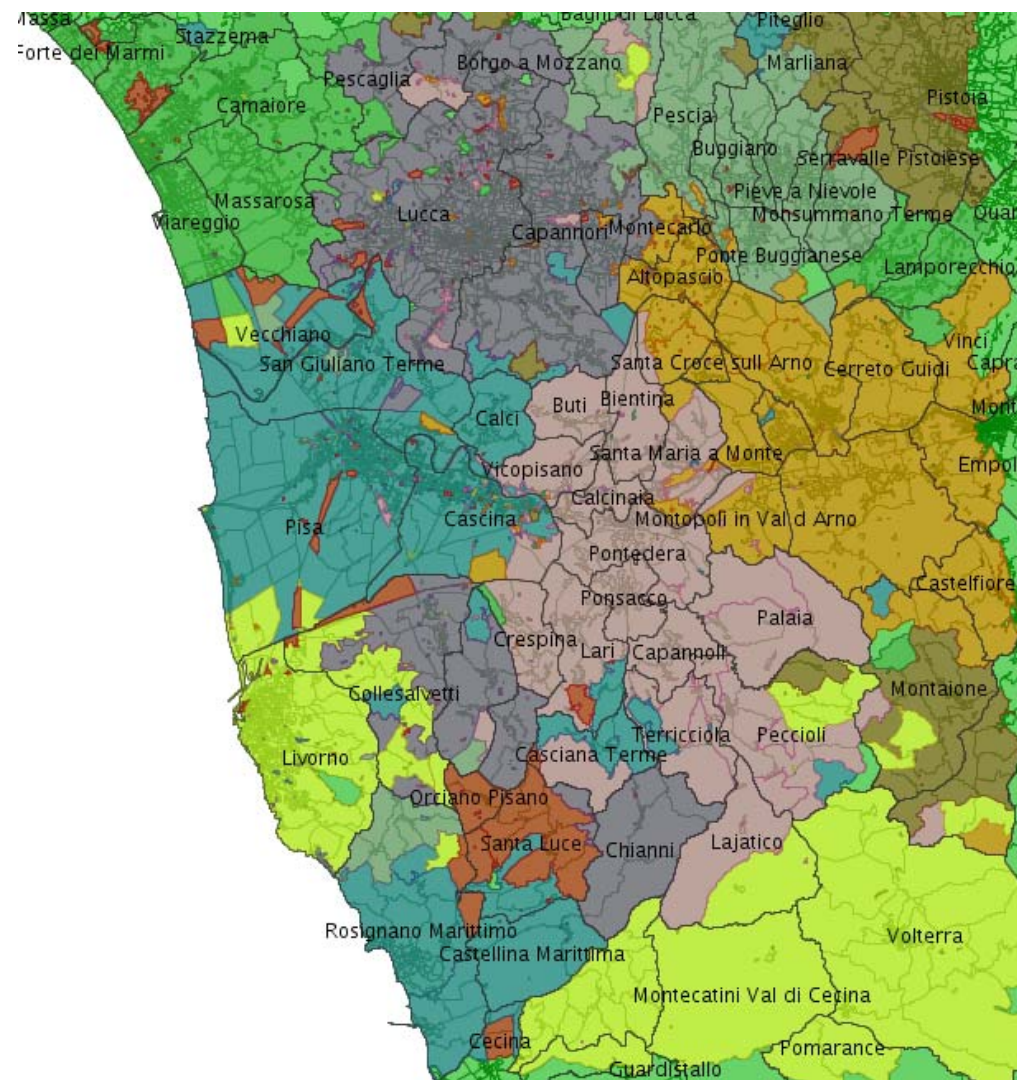
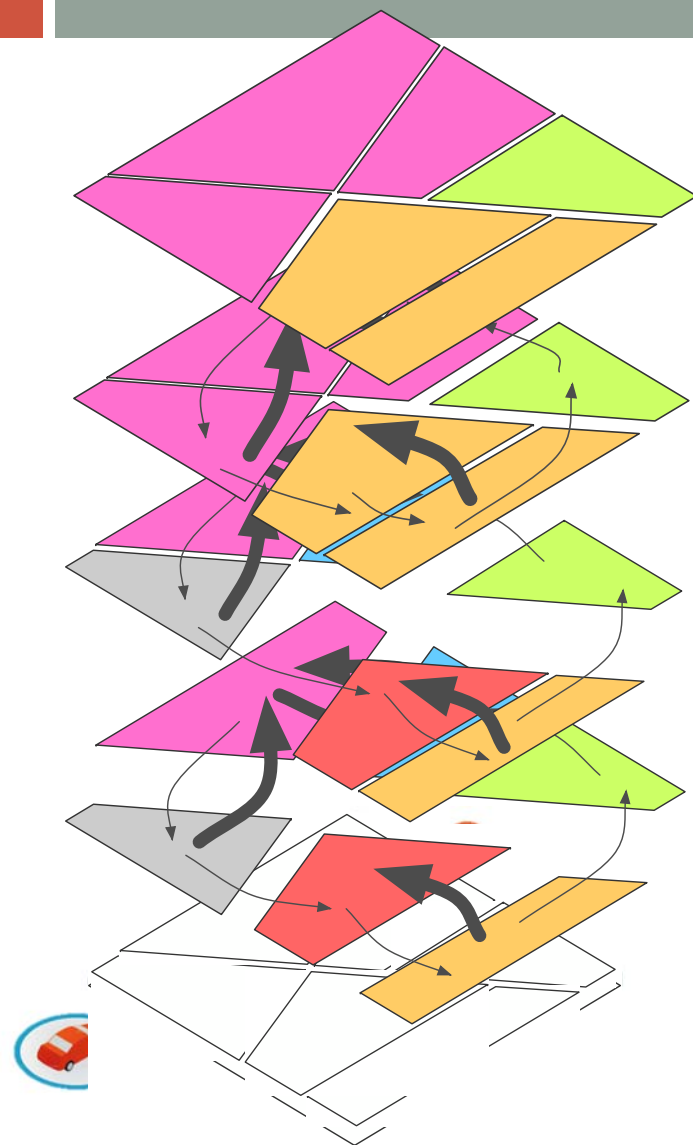
Mobilità sistematica/occasionale



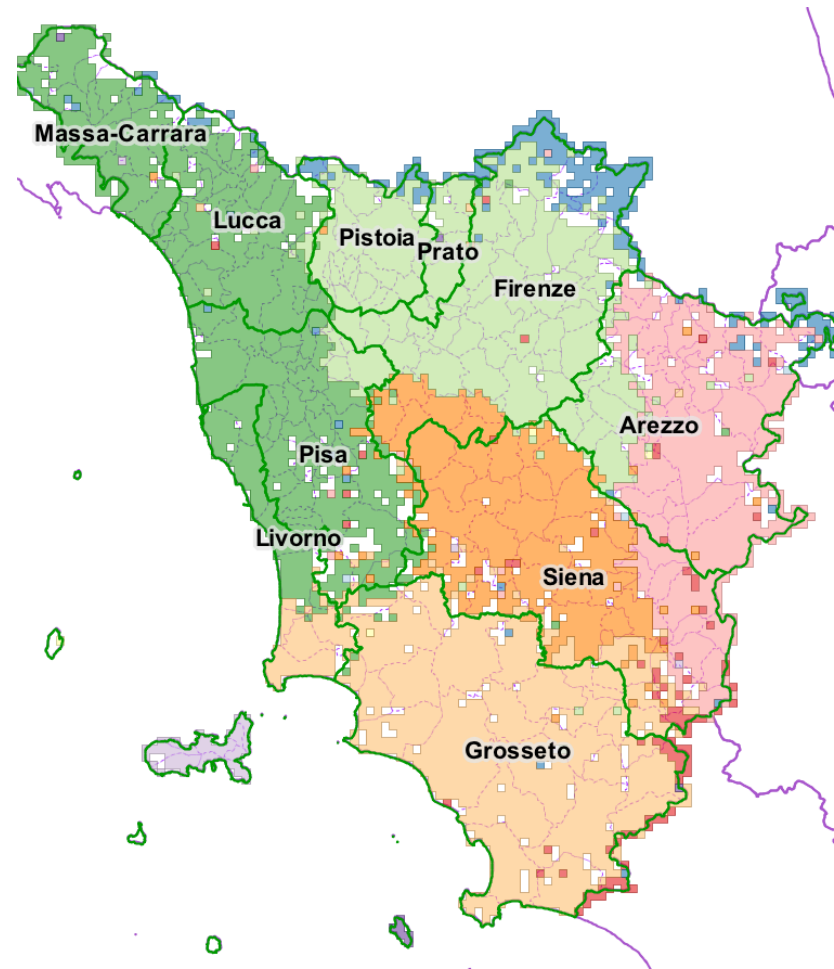
Percorsi di accesso: sistematicità



Bordi territoriali



Confronto con le nuove Province



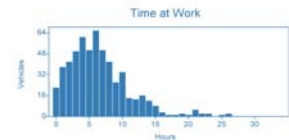
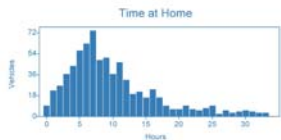
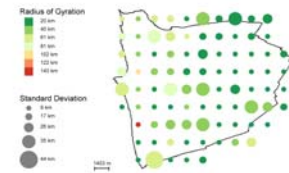
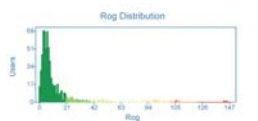
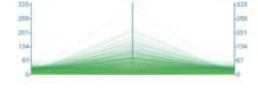
Atlante della Mobilità

Pisa

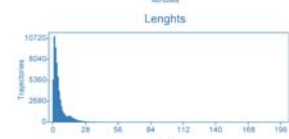
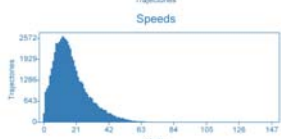
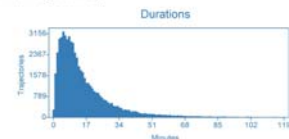
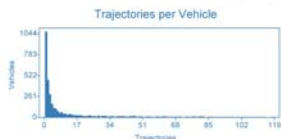
Surface area: 193 km²
 Coordinates: 43.67 10.35
 Vehicles: 13 193
 From: 2011-05-01 To: 2011-05-31



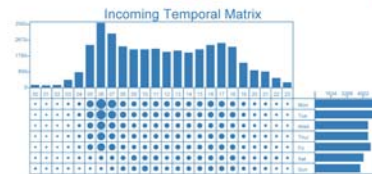
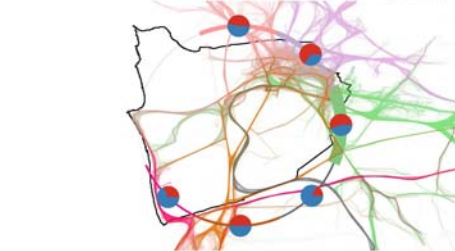
Incoming Inner Outgoing



Inner Traffic (44 435 Trajectories)



Incoming Traffic (38 464 Trajectories)

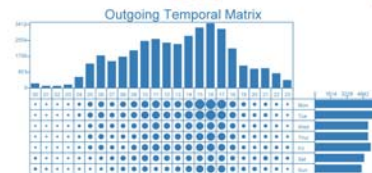
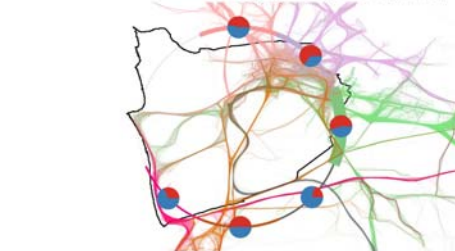


	City	Traj	Perc
NORD 32%	San Giuliano T.	4 818	82%
	Vicchio	1 428	34%
	Viareggio	1 162	30%
	Livorno	862	47%
OVEST 9%	Castellina	358	94%
SUD 12%	Livorno	2 845	82%
	Castellina	865	82%
	San Giuliano Mar.	142	41%
	Fregene	137	19%
EST 54%	Castellina	129	45%
	Castellina	7 278	87%
	San Giuliano T.	2 881	37%
	Portoferra	1 320	85%
	Cali	790	79%
	Castellina	865	92%

Regular VS Occasional



Outgoing Traffic (38 271 Trajectories)



	City	Traj	Perc
NORD 32%	San Giuliano T.	4 342	82%
	Vicchio	1 418	32%
	Viareggio	1 117	30%
	Livorno	865	47%
OVEST 9%	Castellina	320	96%
SUD 13%	Livorno	2 812	82%
	Castellina	865	51%
	San Giuliano Mar.	142	44%
	Fregene	137	19%
EST 84%	Castellina	123	45%
	Castellina	7 285	87%
	San Giuliano T.	2 880	37%
	Portoferra	1 326	85%
	Cali	790	81%
	Castellina	790	82%

Regular VS Occasional



Verso un Osservatorio Permanente della Mobilità

